



Community Benefit Insight State Report Colorado, 2024

What Is Community Benefit?

In exchange for their tax-exempt status, hospitals are required to provide community benefits. A **community benefit** is defined as a program or activity that provides treatment or promotes health and healing as a response to identified community needs. Community benefits have a special focus on disadvantaged populations and must be available to the broader community. According to the Internal Revenue Service (IRS), to count as a community benefit, a program or activity must respond to a demonstrated health-related community need and seek to achieve at least one of the following objectives:

- Increase access to health services.
- Enhance public health.
- Advance knowledge through education or research.
- Relieve or reduce the burden on government to improve health.

Community Benefit Insight Purpose

The Community Benefit Insight (CBI) website is a tool that provides data to the public on nonprofit hospitals' community benefit spending. The CBI site enables users to view critical information about how tax-exempt U.S. hospitals distribute community benefit expenditures to fulfill the hospitals' mission to meet tax-exempt regulatory requirements, understand the linkages between community benefit expenditures and community health needs, and inform conversations and partnerships between tax-exempt hospitals and other stakeholders.

A provision of the Affordable Care Act requires tax-exempt hospitals to undertake collaborative planning activities with their local communities through community health needs assessments (CHNAs). In addition to an assessment of health needs, CHNAs must result in corresponding implementation strategies that document how hospitals plan to respond to identified and prioritized needs. CBI is intended to complement these efforts by providing easy and transparent access to the community benefit financial reporting data that tax-exempt hospitals provide to the IRS each year.

Data

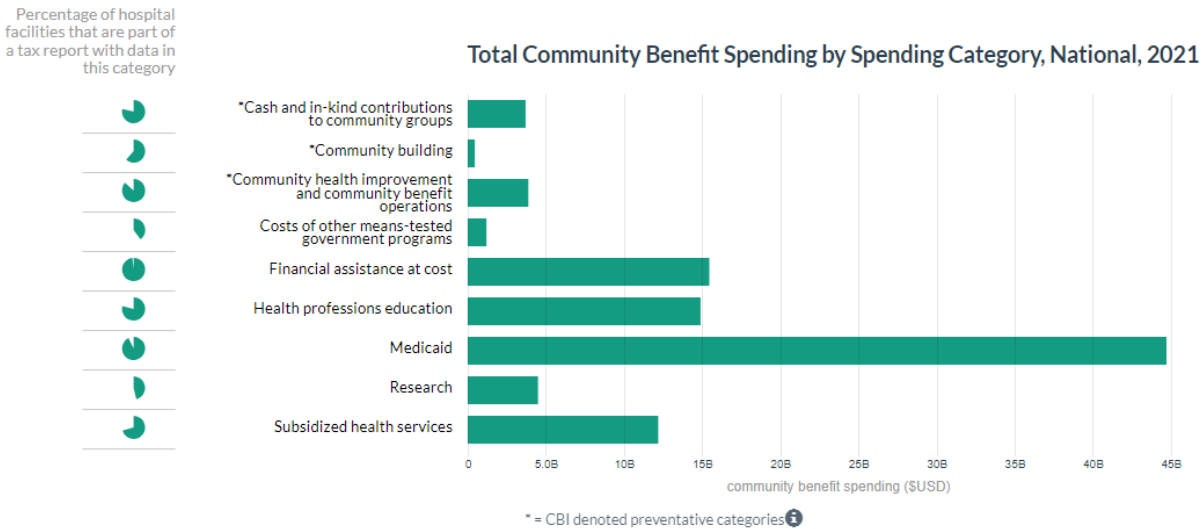
CBI presents community benefit expenditures as reported by 501(c)(3) tax-exempt hospitals on their tax form, Schedule H (Form 990), for 2010 through 2021 from hospitals in all 50 states and the District of Columbia. The Form 990 data include quantitative measures of spending and free-text responses that include important context for the spending. The CBI website content is drawn from governmental and hospital sources, including the Schedule H forms and hospital data from the Centers for Medicare & Medicaid Services. RTI International has also included information from other governmental sources such as the U.S. Census Bureau, which has been integrated to enable comparisons of the communities in which hospitals are located, and information on measures such as health insurance status and prevalence of poverty in the surrounding community.¹

Since 2012, tax-exempt hospitals have been required to report on how they carry out their CHNAs, including the planning process used and how the CHNA is made available to the public (before 2012, reporting this information was optional). A CHNA is now required every 3 years. Nonprofit hospitals now report on whether the facility has adopted and executed its implementation strategy, which is the community benefit plan developed to respond to the community needs identified in the CHNA process. The CHNA process must include community input, including input from people with expertise in public health. The CHNA process is intended to guide community benefit spending at the hospital level, but there is not a formal mechanism for review. The CBI dataset merges CHNAs and spending data to bring transparency to this process. CBI presents CHNA activities as reported by individual facilities to the IRS.

Community Benefit Insight Overview

CBI offers a national analysis of community benefit spending divided into community spending categories, with the data ranging from 2010 to 2021. IRS data are typically made available to the public about 18 months after submission, meaning CBI data may be delayed by about 2 years when they are updated. Data for the most recent available year may be incomplete and will be incrementally added as they become available. In 2021, the last year with complete data, CBI saw \$101 billion across 2,999 facilities. **Figure 1** shows how this spending was split among nine spending categories.

Figure 1. Total Community Benefit Spending by Spending Category



Explore data for other years at https://www.communitybenefitinsight.org/?page=state_analysis.home.

Spending Categories

Community benefit spending is reported in nine defined community spending categories:

Cash and In-Kind Contributions to Community Groups

These contributions are made by tax-exempt hospitals to health care organizations and other community groups restricted to one or more of the community benefit activities. In-kind contributions refer to donations of items or services. In-kind contributions for community benefit include the cost of staff hours donated by the organization to the community while on the organization’s payroll; the indirect cost of space donated to tax-exempt community groups; and the financial value of donated food, equipment, and supplies.

Community Building

Community-building activities help build the community’s capacity to address health needs and often address the “upstream” factors and social determinants that affect health such as education, air quality, and access to nutritious food. It should be noted that the financial reporting of community-building activities may be embedded within Community health improvement and community benefit operations.

Community Health Improvement and Community Benefit Operations

Community health improvement services are activities or programs subsidized by tax-exempt hospitals, carried out or supported for the express purpose of improving health. Such services do not generate inpatient or outpatient revenue, although there may be a nominal patient fee or a sliding-scale fee for these services.

Other Means-Tested Programs

Other means-tested programs are government-sponsored health programs where eligibility for benefits or coverage is determined by income or assets.

Financial Assistance at Cost

Financial assistance (also known as charity care) includes free or discounted health services provided to people who meet an organization's criteria for financial assistance and are unable to pay for all or a portion of the services. Financial assistance does not include bad debt, self-pay or prompt pay discounts, or contractual adjustments with any third-party payors.

Health Professionals Education

This category includes educational programs that result in a degree, a certificate, or training necessary to be licensed to practice as a health professional, as required by state law, or continuing education necessary to retain state license or certification by a board in the individual's health profession specialty. It does not include education or training programs available exclusively to the organization's employees and medical staff or scholarships provided to those individuals. However, it does include education programs if the primary purpose of such programs is to educate health professionals in the broader community.

Medicaid Shortfall

Medicaid is the U.S. health program for individuals and families with low incomes and resources. Primary oversight of Medicaid is handled at the federal level, but each state establishes its own eligibility standards; determines the type, amount, duration, and scope of services; and sets the rate of payment for services. For community benefit purposes, the

hospitals report the amount incurred by tax-exempt hospitals on the difference between the cost of care and what Medicaid pays.

Research

This category includes any study or investigation designed to increase general knowledge and that is made available to the public. For example, Research can include behavioral or sociological studies related to health, delivery of care, or prevention, or studies related to changes in the health care delivery system. The organization can include the cost of internally funded research and the cost of research it conducts funded by a tax-exempt or government entity. The organization cannot report research that is funded by a for-profit entity. Starting in tax year 2013, tax-exempt hospitals can no longer report restricted grants as a community benefit expense.

Subsidized Health Services

Subsidized health services are clinical services provided despite a financial loss to the tax-exempt hospital. A service meets an identified community need if it is reasonable to conclude that if the organization no longer offered the service

- the service would be unavailable to the community,
- the community's capacity to provide the service would be below the community's need, or
- the service would become the responsibility of the government or another tax-exempt organization.

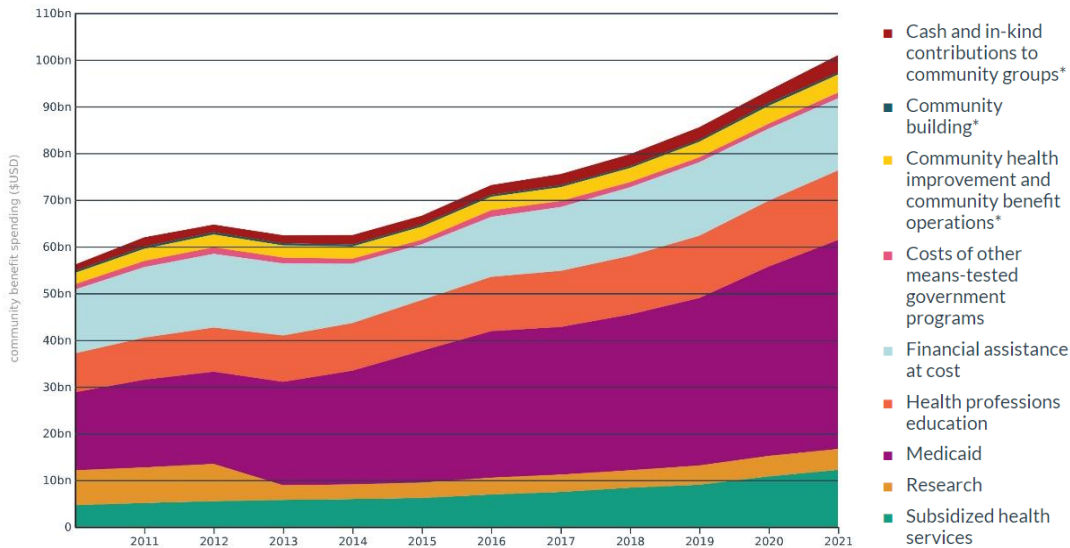
Depending on the individual community, examples could include inpatient programs such as neonatal intensive care or addiction recovery and outpatient programs such as satellite clinics designed to serve low-income communities or home health programs.

National Trends

Proportional spending in community benefit spending categories differs from state to state. Nationally, the largest proportion of spending was in Medicaid shortfall in 2021 at 44.3%. The change in spending by category is shown in **Figure 2**. From 2010 to 2021, the amount

of spending in Medicaid shortfall more than doubled. In fact, 62.5% of the overall change in spending, an increase of over \$28 billion, is attributed to Medicaid shortfall alone.

Figure 2. Change in Spending Category Amounts, 2010-2021.



Explore the data further at https://www.communitybenefitinsight.org/?page=national_analysis.home.

CBI has designated three categories of spending as “preventative,” specifically Community health improvement and community benefit operations, Cash and in-kind contributions to community groups, and Community building. Others, like the Low Institute, have made the case that some of the largest categories of spending should not be considered community benefit at all and exclude Medicaid shortfall from their calculations.² Medicaid shortfall, Health professions education, and Research all offer less direct benefit to local communities when compared with preventative categories. As shown in **Figure 2**, preventative categories make up a small fraction of overall community benefit spending.

Groups in the federal government have also raised concerns about insufficient spending in key categories. In 2023, a report from the Senate Committee on Health, Education, Labor, and Pensions noted that many of the largest nonprofit hospitals are failing to provide sufficient charity care (a common synonym for Financial assistance at cost) while receiving substantial tax breaks.³

Benefits of Preventative Spending

Preliminary research has shown that preventative spending has a tangible benefit on community health. A 2020 study that compared Medicare readmission data and community benefit spending found no statistically significant relationship between total spending and readmissions, but hospitals in the upper quintiles of preventative spending are associated with lower hospital readmission rates.⁴ The historical difficulties around accessing complete community benefit spending data have held back more extensive research on the relationship between individual spending categories and overall health outcomes.

Simply increasing the amount spent on community benefit is unlikely to significantly improve community health, especially if that spending is not in a preventative category. Here, hospitals would benefit from integrating the perspectives of local advocacy groups throughout decision-making processes. As we will explore as follows, targeted programs are far more likely to have evidence supporting their efficacy.

We partnered with two advocacy groups working to promote health equity and strong communities in Colorado, the Center for Health Progress and El Movimiento Sigue. What follows is a data-driven report of current spending practices in Colorado and a stakeholder-driven set of recommendations for hospital action.

Colorado Trends

As shown in Table 1, Colorado spends more proportionally in two categories than the national baseline: Medicaid shortfall and Cash and in-kind contributions to community groups. The former is most likely the result of high pricing in Colorado hospitals: the state ranked 6th of 25 examined in a RAND study, buoyed by some of the most expensive hospitals in the country.⁵ The latter is a positive sign, but two hospitals of interest in Pueblo fall short of the federal and state benchmarks.

In 2021, the most recent data currently made available by the IRS, St. Mary-Corwin Hospital was one of nine hospitals in the Centura Health organization that report their community benefit spending in the aggregate. The hospital is now a part of CommonSpirit Health after a 2023 split. Of Centura's \$2.2 billion in 2021 operating expenses, only \$256,891—about 0.01%—went to Cash and in-kind contributions to community groups. Parkview

Medical Center was in the 14% of Colorado hospitals to not spend anything in this category. Community groups can use these state-level data in conjunction with hospital-level data found on <https://www.communitybenefitinsight.org/> to advocate for increased investments in preventative spending categories.

Table 1. National and State Spending Characteristics, 2021

Spending Category	Percentage of hospitals included on a tax report with spending in this category		Proportion of total community benefit spending in this category			
	National	Colorado	National	Colorado	Centura	Parkview
Cash and in-kind contributions to community groups*	78.5%	86.0%	3.67%	10.79%	0.01%	0.00%
Community building*	61.3%	76.7%	0.45%	0.15%	0.00%	0.19%
Community health improvement and community benefit operations*	86.6%	90.7%	3.84%	2.92%	1.68%	0.04%
Costs of other means-tested government programs	39.9%	74.4%	1.19%	0.94%	1.56%	0.32%
Financial assistance at cost	98.2%	100.0%	15.31%	10.14%	18.10%	4.17%
Health professions education	79.0%	81.4%	14.75%	6.27%	2.51%	4.66%
Medicaid shortfall	92.7%	97.7%	44.27%	61.68%	75.74%	77.18%
Research	46.2%	53.5%	4.45%	2.48%	0.00%	0.00%
Subsidized health services	70.5%	76.7%	12.07%	4.62%	0.31%	13.62%

*Preventative spending categories

Supplemental Qualitative Reporting

Hospitals also submit free-response text in Parts V and VI of the IRS Schedule H (Form 990). These text responses allow reporting organizations to describe the activities that were funded under spending categories. Organizations may also report on spending that does not fall within the defined spending categories but that they believe creates a community benefit. Although this text contains important information contextualizing the spending figures, because of its unstructured and nonstandard format, it has been difficult to develop insights from this part of the CBI data aside from anecdotal evidence from individual hospitals. CBI researchers have attempted to create meaning from the text by using natural language processing to pull out broad thematic trends in community benefit spending. This analysis revealed 29 major themes in community benefit spending among nonprofit

hospitals.⁶ These findings can be an important tool in advocacy efforts by establishing national and regional baselines. Stakeholders can highlight areas of interest in which some hospitals may lag behind their counterparts. **Table 2** shows the frequency of each of the themes, nationally, from 2010 to 2019. The “Affordability” theme, which includes bad debt and charity care, was the most frequent topic in every year of the last decade.

The supplemental filing text can also be queried for key terms. CBI researchers were able to support the Center for Health Progress advocacy goals by providing query reports on mental health and interpretation services. These query reports document every use of a term within a cluster across every supplemental filing in the country from 2010 to 2021. These data allow community advocates to easily identify innovative hospitals and relevant programming. Both query reports can be found in **Appendix A**.

Finally, the CBI team has manually collected CHNA files from various hospital websites and performed a keyword frequency analysis on health equity and disparity topics. We also used generative artificial intelligence to identify whether these topics were discussed in Schedule H (Form 990) or CHNA files. We have developed an interactive application that allows users to explore the data and compare the results for individual hospitals or by theme.

Table 2. Percentage of Hospital Reporting Entities with One or More Uses of Key Term in Theme, by Tax Year

Theme and Key Terms	2010	2011	2012	2013	2014	2015	2016	2017	2018	2019	2019 Rank	Relative % Change	Percentage Point Change
Affordability: Affordable, affordability, bad debt, charity care, collection agency, prescription assistance, unaffordable.	97.5%	98.0%	98.3%	98.3%	98.4%	98.5%	99.0%	99.0%	99.3%	99.6%	1	2.1%	2.1
Government Organizations: County, health department(s), local government, school district.	83.8%	85.7%	90.2%	92.4%	94.4%	94.8%	95.6%	95.6%	96.3%	96.9%	2	15.7%	13.1
Mental Health: Anxiety, depression, dementia, mental health, rehabilitation, support group(s), suicide, therapy.	62.2%	66.2%	73.1%	79.4%	84.5%	87.1%	88.2%	88.6%	90.9%	93.2%	3	49.9%	31.0
Data Collection: Data collection, data collected, evaluation, focus group(s), listening tour, survey.	57.6%	59.2%	73.1%	81.3%	84.4%	87.6%	89.6%	89.7%	91.4%	92.3%	4	60.3%	34.7
Poverty: Poverty, poor, indigent, low income.	78.4%	82.7%	84.3%	85.8%	86.6%	88.6%	87.6%	87.1%	87.9%	89.9%	5	14.7%	11.5
Insurance: Discounted care, emergency Medicaid, presumptive eligibility, underinsured, uninsured, unreimbursed, without insurance.	75.7%	79.4%	83.7%	86.2%	88.0%	88.6%	88.5%	88.7%	89.0%	89.1%	6	17.7%	13.4
Activity: Committee, discussion, health fair(s), health screening(s), hearing screening(s), risk factor surveillance, vision screening(s).	67.5%	70.3%	74.3%	77.8%	82.0%	84.0%	84.0%	84.5%	86.3%	86.9%	7	28.8%	19.4
Chronic Illness: Asthma, cancer, cardiovascular disease, chronic condition, chronic illness, diabetes, heart disease, high blood pressure, hypertension.	58.3%	61.7%	65.8%	71.3%	78.7%	80.3%	80.1%	79.9%	81.4%	82.7%	8	41.8%	24.4
Child: Child, children, infant, kid.	56.4%	58.2%	63.5%	68.9%	75.1%	77.2%	78.6%	77.6%	79.6%	81.9%	9	45.4%	25.6
Senior: Aging, elderly, seniors, senior health.	63.0%	65.8%	68.6%	71.1%	75.1%	77.2%	78.8%	78.6%	79.7%	80.9%	10	28.4%	17.9
Nutrition: Disordered eating, eating disorder, food insecurity, healthy eating, healthy food, hunger, nutrition, obesity.	36.6%	39.3%	46.8%	53.3%	67.5%	72.6%	74.0%	74.4%	76.7%	77.0%	11	110.0%	40.3
Substance Use: Alcohol, cocaine, fentanyl, heroin, marijuana, opioid, overdose, substance abuse, substance use disorder.	17.3%	20.1%	29.6%	39.4%	47.2%	53.8%	57.5%	58.8%	67.7%	70.6%	12	308.0%	53.3
Oral Health: Dental insurance, dentist, oral health, tooth, teeth.	18.4%	20.3%	28.4%	35.3%	43.8%	50.5%	55.6%	57.1%	64.0%	66.7%	13	261.9%	48.3
Race and Ethnicity: African American, Asian, BIPOC, Black, Hispanic, Indigenous, Latino, Latinx, minority populations, Native Hawaiian, Pacific Islander, tribal.	36.5%	38.7%	44.1%	49.3%	51.9%	57.1%	58.4%	59.5%	62.5%	64.4%	14	76.4%	27.9
Exercise: Bike, exercise, fitness, walk.	31.5%	33.8%	37.7%	41.0%	52.2%	53.6%	54.8%	54.7%	55.9%	56.5%	15	79.4%	25.0
Rural: Rural.	43.0%	44.0%	46.7%	48.5%	50.7%	51.4%	51.6%	51.7%	53.2%	55.8%	16	29.9%	12.9
Equity: Disparity, disparities, equity, equities, inequity, inequities.	11.9%	12.9%	16.1%	19.2%	24.5%	30.2%	32.4%	35.6%	38.5%	42.5%	17	256.9%	30.6
Homelessness: Affordable housing, homeless, homelessness, houseless, transient.	14.5%	16.5%	19.0%	22.8%	25.0%	28.9%	32.4%	33.9%	36.0%	40.5%	18	179.0%	26.0
Tobacco: Secondhand smoke, smoke free, smoking cessation, tobacco.	16.8%	17.7%	23.4%	28.1%	36.7%	39.2%	39.8%	38.8%	40.0%	39.2%	19	132.9%	22.4
Criminal Justice: Criminal justice, jail, law enforcement, police, prison, reentry.	9.8%	12.7%	15.9%	20.1%	23.1%	25.8%	27.9%	28.7%	27.9%	32.5%	20	231.4%	22.7
SDOH: Social determinants of health (SDOH).	2.9%	3.5%	5.6%	7.1%	9.8%	14.5%	15.2%	17.3%	25.8%	30.9%	21	958.4%	28.0
Sexual Health: Birth control, HIV, infant mortality, maternal health, prenatal care, sexually transmitted infections, teen pregnancy.	13.7%	15.2%	18.9%	22.7%	26.3%	27.8%	26.8%	27.4%	28.2%	29.7%	22	116.4%	16.0
Health IT: Electronic health record (EHR), electronic medical record (EMR), telehealth.	6.1%	6.9%	8.9%	9.5%	11.5%	12.5%	14.4%	15.2%	18.6%	24.4%	23	300.0%	18.3
Disability: Arthritis, disability, hearing loss, mobility aid, traumatic brain injury, vision loss.	11.5%	12.7%	14.2%	16.7%	17.7%	18.8%	20.1%	20.6%	22.6%	21.8%	24	90.2%	10.4
Language: Limited English, translation, translator.	7.6%	8.5%	9.0%	9.1%	10.2%	13.3%	17.5%	18.2%	18.6%	20.3%	25	168.3%	12.7
Firearms: Gun(s), firearm(s), trigger lock, active shooter.	3.1%	3.6%	4.5%	6.0%	7.3%	6.8%	7.5%	7.6%	10.3%	10.6%	26	237.1%	7.4
Immigration: Alien, DACA, immigration, refugee, undocumented.	3.4%	4.0%	4.9%	5.7%	6.9%	9.2%	8.9%	8.0%	9.0%	9.2%	27	169.9%	5.8
LGBTQ: Bisexual, gay, lesbian, LGBTQ, nonbinary, queer, transgender.	0.5%	1.0%	1.5%	2.4%	2.6%	3.9%	4.3%	5.2%	7.6%	9.2%	27	1676.6%	8.6
Environment: Air quality, air pollution, climate change, climate resilience, extreme heat, fluoride, lead-based paint, pollutants, toxins, water pollution, water quality.	1.0%	1.3%	2.3%	3.8%	4.2%	3.9%	3.7%	4.3%	4.9%	6.1%	29	522.1%	5.2

Recommendations

St. Mary-Corwin Hospital (CommonSpirit Health) and Parkview

Medical Center (UCHealth)

Both hospitals should prioritize upstream investments in community health. Each hospital lags behind state and federal benchmarks for preventative spending, resulting in systemic underinvestment in health infrastructure. The hospitals should engage local stakeholders in allocating additional community benefit spending: community makeup, needs, and strengths are local factors that must be built into community health strategies.

St. Mary-Corwin should dedicate a larger proportion of its functional expenses to community benefit. Although the 2020 national average was 15.5%, St. Mary-Corwin dedicated just 11.96% to community benefit.⁷ One potential focus area for community benefit spending is medical debt: according to the Urban Institute, 18% of communities of color in Colorado have medical debt in collections, outpacing national averages.

Parkview Medical Center should be more transparent in how it administers community benefit spending. In 2020, Parkview reported less than \$200,000 in total spending, far below the \$4,000,000 mark eclipsed in 2019 and 2021.⁸ This underreporting undermines the responsibility of the government to oversee community benefit spending and the right of local stakeholders to share decision-making authority in how that spending is allocated. In keeping with new state legislation, Parkview should involve community members throughout the decision-making process.

Colorado

Colorado passed House Bill 23-1243 in 2023 to increase the transparency and accountability of the community benefit process. This bill requires hospitals to hold a public meeting to review community benefit activities from the last year and solicit feedback on programs and priorities.⁹ After the meeting, the hospital must submit a report to the state that details the attendance, agenda, feedback, and decisions from the meeting. These requirements are the first of their kind nationwide, and if successful, they could serve as a guideline for other states looking to improve hospital accountability. Colorado should closely

monitor this process, solicit stakeholder feedback, and disseminate findings to the rest of the nation.

Colorado should set requirements for transparency in the medical debt collection process. Often, collection communications—including important information on charity care policies—are shared in English only. Colorado state law requires that hospitals must “inform each patient on the patient’s billing statement of the patient’s rights ... including the right to apply for discounted care, and provide the website, e-mail address, and telephone number where the information may be obtained in the patient’s primary language.”¹⁰ Extending this law to further require that collection communications be written in the patient’s language would help patients understand their options for addressing debts.

Federal

To maximize the effects of community benefit spending, the IRS should provide additional clarity on the spending categories. Hospital representatives often cite the difficulty in understanding what does and does not count as a reason for outsized spending in **Medicaid shortfall**. Clear guidelines would help steer hospitals toward the sort of spending envisioned when the Affordable Care Act was passed.

More critically, the IRS should implement a strong, transparent auditing process. A 2020 Government Accountability Office report found that, in 2016, at least 30 hospitals reported no spending, indicating potential noncompliance.¹¹ In response, the IRS updated its reviewing guidelines to produce more documentation. It remains to be seen whether this updated process has been more effective in identifying noncompliant hospitals.

Endnotes

- ¹ Data elements are sourced from the Area Health Resources Files (AHRF) provided by the Health Resources & Services Administration (<https://data.hrsa.gov/data/download>). The AHRF pull data from several different sources into one county-level file that we use. Some of the elements we use are from the U.S. Census Bureau.
- ² Garber, J. (2023, February 13). *Hospitals pushing back on community benefit oversight*. Lown Institute. <https://lowninstitute.org/hospitals-pushing-back-on-community-benefit-oversight/>

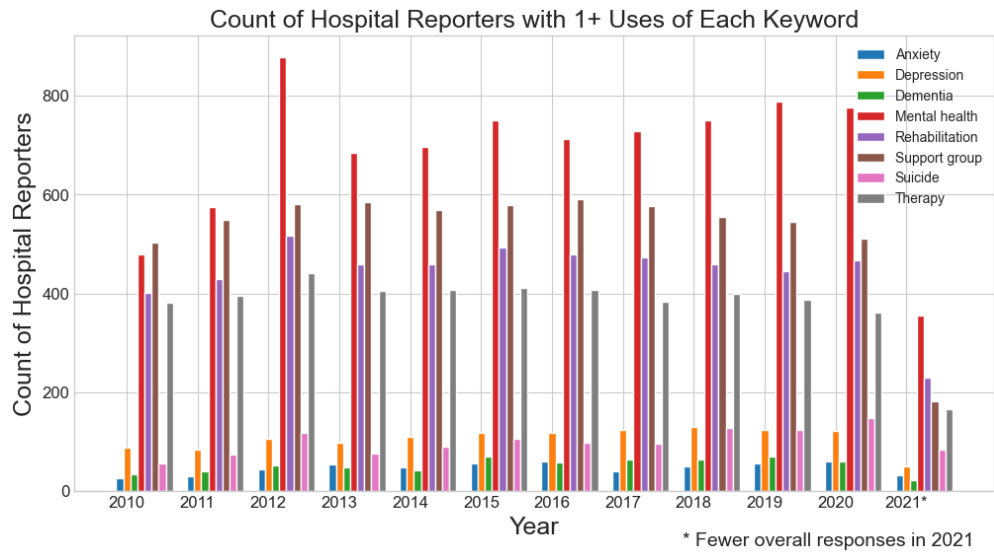
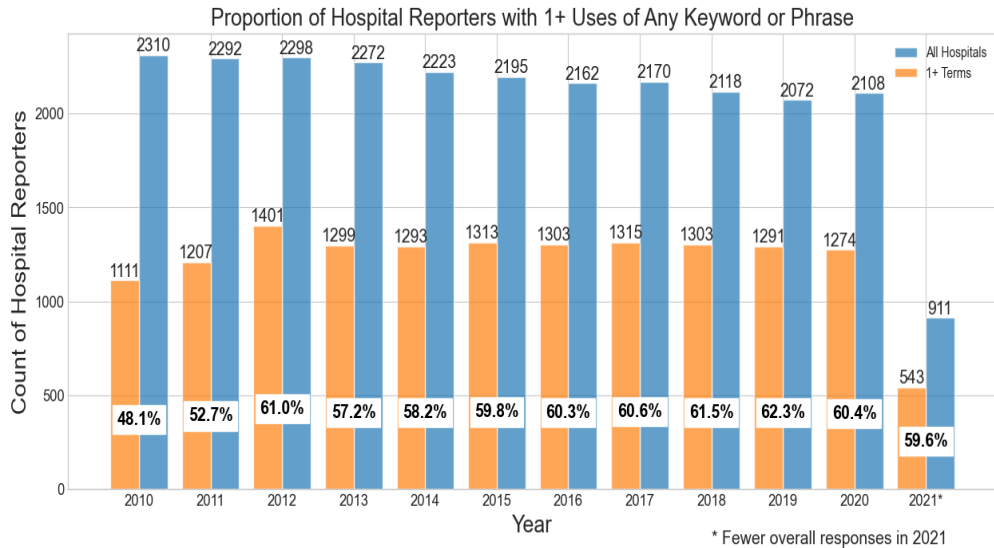
- ³ U.S. Senate Sergeant at Arms. (2023, October 10). *NEWS: Chairman Sanders releases new report showing major nonprofit hospital systems exploiting tax breaks and prioritizing CEO pay over helping patients afford medical care* [Press release].
<https://www.sanders.senate.gov/press-releases/news-chairman-sanders-releases-new-report-showing-major-nonprofit-hospital-systems-exploiting-tax-breaks-and-prioritizing-ceo-pay-over-helping-patients-afford-medical-care/>
- ⁴ Chaiyachati, K. H., Qi, M., & Werner, R. M. (2020). Nonprofit hospital community benefit spending and readmission rates. *Population Health Management*, 23(1), 85–91.
<https://doi.org/10.1089/pop.2019.0003>
- ⁵ White, C., & Whaley, C. M. (2019, May 9). *Prices paid to hospitals by private health plans are high relative to Medicare and vary widely: Findings from an employer-led transparency initiative*. RAND. https://www.rand.org/pubs/research_reports/RR3033.html
- ⁶ Hadley, E., Marcial, L. H., Quattrone, W., & Bobashev, G. (2023). Text analysis of trends in health equity and disparities from the Internal Revenue Service tax documentation submitted by US nonprofit hospitals between 2010 and 2019: Exploratory study. *Journal of Medical Internet Research*, 25, e44330. <https://doi.org/10.2196/44330>
- ⁷ American Hospital Association. (2023, October). *Tax-exempt hospitals provided nearly \$130 billion in total benefits to their communities*.
<https://www.aha.org/system/files/media/file/2023/10/Results-from-2020-Tax-Exempt-Hospitals-Schedule-H-Community-Benefit-Reports.pdf>
- ⁸ Colorado Department of Health Care Policy and Financing. (2024, February 5). *Hospital community benefit accountability: Annual report*.
https://hcpf.colorado.gov/sites/hcpf/files/2024%20Hospital%20Community%20Benefit%20Report_0.pdf
- ⁹ Hospital Community Benefit, HB23-1243 (2023). <https://leg.colorado.gov/bills/hb23-1243>
- ¹⁰ Notification of Patients' Rights, Colo. Rev. Stat. § 25.5-3-504 (2022).
<https://casetext.com/statute/colorado-revised-statutes/title-255-health-care-policy-and-financing/indigent-care/article-3-indigent-care/part-5-health-care-billing-for-indigent-patients-receiving-services-not-reimbursed-through-the-colorado-indigent-care-program/section-255-3-504-notification-of-patients-rights>

¹¹ U.S. Government Accountability Office. Tax Administration: IRS Oversight of Hospitals' Tax-Exempt Status. GAO-23-106777. Washington, DC, 2023. Accessed May 31, 2024. <https://www.gao.gov/products/gao-23-106777>.

Appendix A: Mental Health and Interpretation Services Query Reports

CBI Query on 2024-05-24 by RTI International

Keywords: anxiety, depression, dementia, mental health, rehabilitation, support group, suicide, therapy



Keyword	Example Sentence	EIN	Hospital Name	Tax Year	F990 State
anxiety	lectures at fuller village focused on proper nutrition as you age and stress and anxiety	42103604	Bidmc-Milton Hospital Inc	2015	MA
anxiety	ed to conduct a program for parents of young children on how to develop resiliency - the ability to adapt well to adversity, trauma, tragedy and significant sources of stress- to help children better manage their stress and anxiety	42103604	Bidmc-Milton Hospital Inc	2015	MA
anxiety	depression/anxiety, suicide, alcohol use, opioid and prescription drug use, and marijuana use are major health issues and are having a significant impact on the population as well as a burden on the service system	42103612	New England Baptist Hospital	2018	MA
anxiety	depression and anxiety, isolation, alcohol abuse, opioid and prescription drug abuse, and post-traumatic stress disorder were identified as major health concerns	42103612	New England Baptist Hospital	2018	MA
anxiety	, depression, anxiety, and stress)	42103881	Beth Israel Deaconess Medical Center	2017	MA
anxiety	depression/anxiety, suicide, opioid and prescription drug dependency, and alcohol and marijuana use, particularly in youth, are major health issues and are having a tremendous impact on the population as well as a burden on the service system	42103881	Beth Israel Deaconess Medical Center	2017	MA
anxiety	the navigators help lessen the anxiety and apprehension of having routine mammograms and other diagnostic imaging or procedures, and guide women through any additional needed tests or procedures	160960470	Crouse Hospital	2011	NY
anxiety	through this collaborative approach, fragile footprints works to address the issues commonly experienced by families of medically fragile children, including stress, anxiety, isolation, financial hardship, relationship issues, and interruption of daily routines	222667354	Beth Israel Deaconess - Plymouth	2017	MA

anxiety	workshops focused on developing specialized coping skills relevant to: sensation seeking; impulsivity; anxiety sensitivity; negative thinking	222667354	Beth Israel Deaconess - Plymouth	2017	MA
anxiety	the child development clinic now provides assessment and intervention of childhood disorders including autism spectrum disorders, developmental delays, sleep problems, anxiety, depression, and other mood disorders, as well as common school, family, and social stressors typical in childhood	237087041	Kishwaukee Community Hospital	2011	IL
anxiety	the clinic has the spectrum of services and expertise to diagnose and treat a vast array of psychiatric disorders including mood and anxiety disorders, psychotic disorders, personality disorders, post traumatic stress disorder, and major depressive disorder	270440772	Tufts Medical Center	2014	MA
anxiety	the mission health program has over 1400 enrolled patients, all of whom have a better understanding and reduced anxiety concerning financial obligations and assistance if hospitalization is needed	311373080	Mercy Medical Center-North Iowa	2010	IA
anxiety	the top three health risks for the area are: smoking, high blood pressure and high cholesterol, while the top three health risks for the low income population and the uninsured, medicare and medicaid populations are: high blood pressure, depression/anxiety disorder, and high cholesterol	311373080	Mercy Medical Center-North Iowa	2010	IA
anxiety	the highest rates of mental illness are among adults aged 25 to 34 years old, depressive, bipolar, anxiety, alcohol abuse and opioid use disorders are the most frequent diagnoses among adults	341893439	Mercy Medical Center	2020	OH
anxiety	the leading diagnoses for children are adjustment, conduct, attention deficit, anxiety and depressive disorders	341893439	Mercy Medical Center	2020	OH
anxiety	mercado and his team care for the psychological well-being of patients 15 years and older struggling with trauma, anxiety or depression in an outpatient setting	350211370	Cameron Memorial Community Hospital Inc	2020	IN

anxiety	comprehensive counseling services offers assistance for a number of issues including, but not limited to, coping with stress and change; family, marital, and significant other relationships; child, adolescent and parenting issues; depression and/or anxiety; and alcohol and drug abuse issues	350869066	St Vincent Womens Hospital	2015	IN
anxiety	as part of the healthy driven program, emh provides prevention and wellness education with its on line aware screening programs: heart aware, stroke aware, depression aware, anxiety aware, addiction aware, and diabetes aware	352339114	Elmhurst Memorial Hospital	2015	IL
anxiety	this program has assisted many of the women in decreasing tobacco use and reducing anxiety	362174823	Rush University Medical Center	2017	IL
anxiety	"senior renewal" is an outpatient counseling program for senior adults who may be facing emotional and physical problems unique to the aging process such as feelings of loneliness, isolation and anxiety	390818682	St Marys Hospital Medical Center	2015	WI
anxiety	this ultimately helps decrease anxiety (for caregivers as well as the children) and potentially prevents unnecessary hospitalizations, reducing overall health care costs	430738490	Ssm Cardinal Glennon Childrens Hospit	2020	MO
anxiety	they provide emotional and spiritual support in times of anxiety, crisis, and terminal	431343281	Ssm Health St Joseph Hospital - Sc	2012	MO
anxiety	they provide emotional and spiritual support in times of anxiety, crisis, and terminal illness	431343281	Ssm Health St Joseph Hospital - Sc	2012	MO
anxiety	omci partnered with gateway of hope, which is designed for women in our primary service regarding the triggers, signs and effects of depression, anxiety, stress and trauma	480577664	Olathe Medical Center	2018	KS
anxiety	lodging on centra property for the night before or after can lessen patient anxiety and exhaustion	540715569	Centra Health	2013	VA

anxiety	our liaisons help patients with issues from anxiety over a new diagnosis to complex substance use disorders, often facilitating follow-up care with outpatient providers	590855412	Mease Hospital And Clinic	2021	FL
anxiety	our liaisons help patients with issues from anxiety over a new diagnosis to complex substance use disorders, often facilitating follow up care with outpatient providers	592043026	St Anthonys Hospital	2021	FL
anxiety	it can comfortably accommodate patients of different shapes and sizes and that can help alleviate anxiety and claustrophobia	956006469	Citrus Valley Medical Center-Qv Campus	2015	CA
dementia	nearly 800 people attended free hospital-sponsored health lectures and awareness events on topics such as back pain, cardiovascular health, congestion, dementia and hip or knee pain	60646554	Bridgeport Hospital	2012	CT
dementia	other support groups offered include bariatric, diabetes, stroke, parkinson's disease, lupus, caregivers of a chronically ill or disabled partner, and caregivers of people with dementia	61562701	St Catherine Of Siena Hospital	2017	NY
dementia	the 108-bed facility provides specialized services including traditional snf care, as well as specialty units for residents who require post-acute care, ventilator care, and dementia care	160743134	Rochester General Hospital	2017	NY
dementia	services include: post-acute care, short-term rehabilitation, ventilator care, dementia care, peritoneal dialysis, wound care, telemedicine, neurobehavioral care, long term skilled nursing care and adult day care	160743134	Rochester General Hospital	2017	NY
dementia	unity living center in rochester is a 120-bed state-of-the-art skilled nursing facility focused on treatment and rehabilitative care for patients with medically complex needs, dementia, and behavioral challenges	160743134	Rochester General Hospital	2017	NY
dementia	it is designed to help the family members, friends and caregivers of those suffering from alzheimer's disease and other form of dementia	237218917	Monongahela Valley Hospital Inc	2015	PA

dementia	various memorial hospital departments provided free monthly support groups for families with alzheimer's disease and dementia, heart disease, and parkinsons disease	350985964	Memorial Hospital And Health Care Center	2014	IN
dementia	various memorial hospital departments provided free monthly support groups for families with alzheimer's disease and dementia, heart disease, and parkinsons's disease	350985964	Memorial Hospital And Health Care Center	2012	IN
dementia	the center provides care for persons with diabetes, dementia, depression and other mental and medical diagnoses	362379649	Loyola Gottlieb Memorial Hospital	2014	IL
dementia	our top three needs are behavioral health care (including mental health and substance use disorder), obesity, and dementia/alzheimer's care	391027536	Black River Memorial Hospital	2019	WI
dementia	- alzheimer's association-provided funds to support the continued offering of free support services for families with a loved one with dementia/alzheimer's	392031968	Chi Health Nebraska Heart	2018	NE
dementia	as an aging region, the health status of people we serve includes, but is not limited to, chf, diabetes, cancer, orthopedic conditions, dementia, and other geriatric ailments	460234354	Avera Gettysburg Hospital	2010	SD
dementia	*alzheimer's association-provided funds to support the continued offering of free support services for families with a loved one with dementia/alzheimer's	470757164	Chi Health Midlands	2018	NE
dementia	pfh sixty plus services held 22 dementia caregiver support group meetings with 137 participants to address specific needs and concerns for patients and caregivers to address isolation, depression, and loneliness associated with managing the disease	582322328	Piedmont Fayette Hospital	2019	GA
dementia	the madonna ptak center for alzheimer's and memory disorders clinic was selected to participate in the area agency on aging of pasco-pinellas' dementia care and cure initiative (dcci) task force for the region	590624462	Morton Plant North Bay Hospital	2019	FL

dementia	the physicals included a complimentary echocardiogram and bar-b-que partnerships continued with the local metcalf senior center, offering "sit and be fit" classes as well as a dementia support group	810303913	Community Hospital Of Anaconda	2014	MT
dementia	the cha sponsored community dementia support group is ongoing	810303913	Community Hospital Of Anaconda	2014	MT
dementia	support groups focus on helping community members who are dealing with grief and loss, diabetes and family members suffering from dementia	830300467	Powell Valley Hospital	2012	WY
dementia	hospital leadership and clinical providers conduct health education information in the areas of adolescent health, care for patients with dementia, skin care, and womens health	840255530	San Luis Valley Reg Med Center	2017	CO
dementia	aging services focused on alzheimer's and dementia: lead by our center for excellence in aging and lifelong health, riverside continues to offer leadership at a national level for the importance of caring for memory care patients and their caregivers	901000718	Riverside Regional Medical Center	2021	VA
depression	copley hospital is contributing to this by having our diabetes educator and registered dietitian screen all wellness center referrals for depression and refer to a behavioral health professional as needed	30179423	Copley Hospital	2012	VT
depression	a multi disciplinary team also performs a special assessment to guage the patient's status and whether they may have medication issues, be a fall risk or suffer from ailments like dementia and depression	60646715	Midstate Medical Center	2017	CT
depression	get help for depression: jamaica hospital's medical providers incorporate depression screening during routine medical examinations and ongoing care	111631788	Jamaica Hospital Medical Center	2012	NY

depression	promote mental health (corresponds to nys's promote mental health and prevent substance abuse): depression rates were higher across nyc than within jhmcs neighborhoods, decreasing in queens, eny, and swq to varying degrees, while increasing slightly in jamaica between 2009 and 2010	111631788	Jamaica Hospital Medical Center	2012	NY
depression	8% and to increase the proportion of primary care physicians who screen adults (19+) for depression during office visits from 2	111631788	Jamaica Hospital Medical Center	2012	NY
depression	these vertically integrated services promote the coordination of mental health care, including increasing depression screening rates and providing appropriate and timely treatment	111631788	Jamaica Hospital Medical Center	2012	NY
depression	some topics included: heart, brain injury awareness, diabetes, breast cancer, colorectal cancer, melanoma, concussion, cholesterol education, men's health, better sleep and depression	150584188	Newark Wayne Community Hospital	2017	NY
depression	additionally, wellspan-good samaritan hospital participated in system-wide initiatives to address the shared community health priorities of depression (mental health) and adult overweight/obesity	230794160	Good Samaritan Hospital	2015	PA
depression	the feeling blue depression awareness campaign (www	230794160	Good Samaritan Hospital	2015	PA
depression	com) originated as a resource for york and adams county adults suffering from mild depression	230794160	Good Samaritan Hospital	2015	PA
depression	improved mental health services (referring to depression screenings, low cost treatment, and community services for persons with co-occurring addiction and mental health conditions)	231352115	Eagleville Hospital	2012	PA
depression	- a group of clergy members from christian stronghold baptist church frequently advise parishioners suffering from depression, anxiety and other mental health issues	231352685	Hospital Of Univ Of Pennsylvania	2011	PA

depression	immobility leads to more pain and sometimes depression	232935278	Childrens Institute Of Pittsburgh	2010	PA
depression	sgH provides behavioral health services to sdc's east region through clinical programs for adults and older adults, including individuals living with psychosis, depression, grief, anxiety, traumatic stress and other disorders	330449527	Grossmont Hospital	2018	CA
depression	each participant met individually with staff members to discuss recent changes in health status and completed stress, depression and hostility scales	362222696	Swedish American Med Ctr Belvidere	2016	IL
depression	individuals at high risk of depression were identified and given initial consultations with specially trained registered nurses	362222696	Swedish American Med Ctr Belvidere	2016	IL
depression	two community surveys have identified heart disease, diabetes, cancer, pre-natal care and depression as major healthcare issues in our market	362222696	Swedish American Med Ctr Belvidere	2011	IL
depression	this includes mental disabilities, depression and self-perceptions of mental health	362604009	Ottawa Regional Hospital & Healthcare Center	2014	IL
depression	over \$6,500 was spent to provide general community health education at community events and health fairs throughout northeast michigan for 1,351 people on topics like cpr/first aid, depression, diabetes prevention, vaccinations, breastfeeding promotion, and trauma prevention	386000029	Midmichigan Medical Center - Alpena	2017	MI
depression	the mission of this group is to address depression, bullying and suicide prevention in our community	410837659	Minnesota Valley Health Center Inc	2013	MN
depression	" the analyses done include the identification of patients who have uncontrolled asthma, uncontrolled diabetes, are pre-diabetic, or who have depression; the results are used in targeted outreach by the population care team	411620386	St Marys Regional Health Center	2018	MN

depression	the integrative medicine program combines the best of complementary and conventional medical therapies to develop holistic solutions for children with chronic illness, acute and chronic pain, side effects from medical treatments, and emotional challenges such as depression and anxiety: \$347,147	411754276	Childrens Health Care	2015	MN
depression	one response involved the olathe health family medicine clinics screening patients during wellness visits using the phq-9 depression screening, continue enhancements to care management for patients with mental illness through implementation of behavioral health care management for patients with mental health conditions	481155548	Miami County Medical Center	2020	KS
depression	in 2020, the goal was to assess 80% of patients ages 12 and older annually for depression	481155548	Miami County Medical Center	2020	KS
depression	in 2020, the goal was to launch a community event in Paola, offers breakout sessions about depression/anxiety, trauma, foster care, etc	481155548	Miami County Medical Center	2020	KS
depression	* facility statistical data which indicates the top diagnosis in the population are consistently diabetes, hypertension and depression	810231787	Northern Montana Hospital	2015	MT
depression	we continue to support health education and screenings related to chronic diseases and prevalent health conditions in the community including breast and lung cancer, chronic obstructive pulmonary disease (COPD), heart health, depression, diabetes and mental/behavioral health	912155626	Marlborough Hospital	2014	MA
depression	* each year, Cedars-Sinai takes part in community-based activities with more than 170,000 encounters, including health fairs, exercise programs, and screening programs for conditions such as cardiovascular disease, depression, diabetes and hypertension, as well as immunization programs, lectures, and workshops	951644600	Cedars-Sinai Medical Center	2014	CA

mental health	- the hospital has seen an increase in patients having mental health issues and the hospital is having to hold patients for several days before beds become available	20223332	Huggins Hospital	2012	NH
mental health	meetings were established with the state of new hampshire hospital, county jail, and northern human services and local police chiefs to evaluate and assess the process to ensure the agencies are working together to address the lack of mental health services in nh	20223332	Huggins Hospital	2012	NH
mental health	" distributed to the white plains youth bureau, these age-appropriate decks of cards featured conversation starters around issues like health, relationships, mental health, covid, racism and more	131740130	White Plains Hospital Center	2021	NY
mental health	mental health - stress management	131740130	White Plains Hospital Center	2021	NY
mental health	,medical staff, monthly health fair and health screening/outreach, free television, telephone and internet service to all admitted patients, subsidized hospital based primary care and mental health clinics, and subsidized patient discharge medical transportation service	221487166	East Orange General Hospital	2014	NJ
mental health	the hospital worked phn to support the development of: altoona community health center - which has provided increased access to physical health services; and altoona behavioral health - which has provided increased access to mental health and substance abuse services	231352155	Altoona Regional Health System	2010	PA
mental health	support groups that help people deal with alzheimer's disease, stroke, cancer, diabetes, grief, mental health issues, and caring for ill loved ones; iii)	231352155	Altoona Regional Health System	2010	PA
mental health	the goals of the program are to optimize the opportunities for the communitys youth to create a healthy and successful future, and to mitigate the mental health effects of the consequences of these behaviors	350877574	Elkhart General Hospital	2015	IN

mental health	promedica community health plan overall, emphasis is placed on clinical programs focused on leading causes of death: chronic diseases, mental health, and hunger/obesity due to the large numbers of individuals affected by these diseases	382796005	Bixby Medical Center	2020	MI
mental health	the primary focus for community health activities are related to education, screening, and prevention of chronic diseases, mental health issues, and hunger/obesity; and improving related conditions that result in high morbidity and mortality in our communities, with special emphasis placed on serving underserved populations	382796005	Bixby Medical Center	2020	MI
mental health	community other: sart/sane - the sexual assault response team works with local law enforcement, domestic abuse agencies, sexual assault agencies, mental health facilities, local medical providers to improve immediate response to victims of sexual assault	396089134	Thedacare Med Ctr - Wild Rose	2020	WI
mental health	,the subsidized health services included in part i, line 7g is mental health services provided by grmc	420680407	Great River Medical Center	2019	IA
mental health	the services that will be addressed from the health needs assessment are adequate supply of health care providers, obesity, educational/promotional services, diabetes, mental health services enhancement, and oncology	450226729	St Aloisius Medical Center	2013	ND
mental health	office space is provided for hearing services and mental health consortium as well as for public health	450226729	St Aloisius Medical Center	2013	ND
mental health	we provide office space (in kind) for public health and rural mental health consortium staff/clients in our outpatient services building	450226729	St Aloisius Medical Center	2013	ND
mental health	final prioritized needs access to care access to health mental health and wellbeing substance abuse nutrition and physical activity a full report of park nicollet methodist's chna and implementation plan is posted on park nicollet's webpage at http://www	455023260	Park Nicollet Methodist Hospital	2018	MN

mental health	no-charge and low-cost dental and mental health care is available by appointment	455023260	Park Nicollet Methodist Hospital	2018	MN
mental health	to assist with the lack of mental health providers and services in the vast underserved areas of the state, bryan health offers behavioral health evaluations via telehealth to several emergency department providers across the state	470376552	Bryan Medical Center West	2019	NE
mental health	bryan health has also started the community transitions program, operated by peers and a social worker, to provide follow-up to identified adults who regularly use our mental health services	470376552	Bryan Medical Center West	2019	NE
mental health	these efforts include providing a segregated mental health emergency department staffed with specially trained behavioral health nurses, social workers and peer specialists	470376552	Bryan Medical Center West	2019	NE
mental health	in order to further leverage these specially trained staff to assist with the lack of mental health providers and services in the vast underserved areas of the state, bryan health offers behavioral health evaluations via telehealth to several emergency department providers across the state	470376552	Bryan Medical Center West	2019	NE
mental health	in a special project, bryan health's mental health emergency department has partnered with several community providers to create community plans for an identified high user patient group to aide in preventing repeat hospital inpatient admissions	470376552	Bryan Medical Center West	2019	NE
mental health	bryan medical center mental health has been a leader in suicide prevention for our community and state	470376552	Bryan Medical Center West	2019	NE
mental health	in addition, this bryan mental health manager provided leadership in developing the first local outreach to suicide survivors (loss) team in nebraska and is assisting with providing direction in the development of loss teams in other parts of the state	470376552	Bryan Medical Center West	2019	NE

mental health	to further reach the public, bryan health also began publishing podcasts twice per month in 2016, educating listeners on a variety of topics, including childhood development, mental health, blood pressure guidelines, postpartum depression, cancer screenings, diabetes management, and more	470376552	Bryan Medical Center West	2019	NE
mental health	beyond this, the center for the child and the community convened an early childhood comprehensive health working group comprised of school administrators, community endowment representatives, mental health representatives and health care representatives	470376552	Bryan Medical Center West	2019	NE
mental health	premier services include cardiology, neuroscience, orthopedics, vascular, trauma and emergency centers, intensive care, women's and children's health, oncology, imaging and mental health	470376552	Bryan Medical Center West	2019	NE
mental health	- participation in and sponsorship of mental health coalitions including kim foundation, community alliance foundation, voices for children, youth emergency service, project harmony and el centro de las americas	470376615	Chi Health Immanuel	2015	NE
mental health	* chi health has open medical staffs * chi health is the sole, comprehensive mental health provider in the omaha msa area operating a breakeven point of revenue	470376615	Chi Health Immanuel	2015	NE
mental health	recently, cch also added several new telehealth services, including the telestroke program, e-mental health triage and the telestewardship program	470542043	Columbus Community Hospital	2018	NE
mental health	e-mental health triage allows for behavioral health assessments out of cch's emergency department and the telestroke program allows cch stroke patients and the physicians to immediately connect and consult with expert nebraska medicine neurologists	470542043	Columbus Community Hospital	2018	NE
mental health	partnering with spindletop center to offer mental health and substance abuse treatment services	741303720	Baptist Beaumont Hospital	2012	TX

mental health	access to mental health services 4	741303720	Baptist Beaumont Hospital	2012	TX
mental health	1 federally-qualified health center, including satellite clinics 60+ dental providers mental health providers: 1 crisis stabilization home, 2 outpatient mental health treatment centers serving both adults and children addiction treatment: 1 inpatient center and 2 outpatient centers to serve both adult and children	810231793	St Patrick Hospital	2020	WA
mental health	each of these counties is designated a mental health professional shortage area by the u	810463482	Providence St Joseph Medical Center	2018	WA
mental health	-30-bed mental health unit	956006469	Citrus Valley Medical Center-Qv Campus	2011	CA
rehabilitation	this information is available in admissions areas, emergency rooms, primary care and outpatient rehabilitation centers, the revenue management center (rmc) and other areas throughout catholic health where eligible patients and family members are likely to be present	160743187	Sisters Of Charity Hospital	2016	NY
rehabilitation	chilton sports medicine & rehabilitation management, inc	221559402	Chilton Hospital	2012	NJ
rehabilitation	we consider our shortfall a community benefit because we are the only free standing physical medicine and rehabilitation provider in the state and we serve the most severe brain, spinal and stroke patients throughout our service date	237067206	Mississippi Methodist Rehab Ctr	2016	MS
rehabilitation	pdf,methodist rehabilitation center's community benefits go well beyond clinical inpatient and outpatient rehabilitation care	237067206	Mississippi Methodist Rehab Ctr	2016	MS
rehabilitation	,subsidized health services included in the period from july 1, 2013 through december 31, 2013 were ambulance service/air transport, behavioral health, rehabilitation services and ob/gyn services	250965547	Saint Vincen t Health Center	2013	PA

rehabilitation	each features an emergency department, inpatient care including rehabilitation and medical/surgical, diagnostic and treatment services, as well as family practice and specialty physicians	310993422	Greenfield Area Medical Center	2018	OH
rehabilitation	adena rehabilitation and wellness center: provides physical, occupational, massage and industrial rehabilitation, as well as orthopedics, sports medicine, women's health, vestibular, fibromyalgia and chronic pain programs, as well as industrial and specialized hand programs	310993422	Greenfield Area Medical Center	2018	OH
rehabilitation	delaware county:grady memorial hospital is a 152-bed community hospital in delaware county that offers cancer treatment and cardiac rehabilitation services in addition to its full range of inpatient healthcare services	320007056	Marion General Hospital	2011	OH
rehabilitation	athens county:doctors hospital - nelsonville is a 25-bed acute care facility in athens county with a 24-hour emergency department, inpatient and outpatient rehabilitation services and an on-site specialty medicine clinic supporting local community healthcare needs	320007056	Marion General Hospital	2011	OH
rehabilitation	in addition, ohiohealth corporation is the parent organization and sole voting member of several rural community hospitals, organizations providing multidisciplinary home care and rehabilitation, medical research, fundraising in support of the system hospitals, medical facility property management, and physician foundations	320007056	Marion General Hospital	2011	OH
rehabilitation	additionally, we opened promedica wildwood orthopaedic and spine hospital, a division of promedica toledo hospital, which, to primarily address the needs of aging baby boomers, solely serves orthopaedic and spine patients, offering diagnostic, surgical and rehabilitation services under one roof	344428794	Flower Hospital	2011	OH

rehabilitation	this center will provide new academic programs and research tied to behavioral health, rehabilitation services and senior care	350868085	Parkview Hospital	2013	IN
rehabilitation	these physicians, together with other dedicated professionals, provide a wide range of services including the following: acute medical & surgical, emergency, home health, radiology, laboratory, cancer care, bariatrics, women's health, pain management, sleep studies, rehabilitation, patient and community health education and professional education	356001540	Goshen Hospital	2021	IN
rehabilitation	the rcsip clinic at freedom center serves adult males that are in rehabilitation for substance abuse issues	362174823	Rush University Medical Center	2015	IL
rehabilitation	most recently the hospital purchased an abandoned grocery store in the community and has revitalized it into a health park which includes outpatient rehabilitation, a women's health center, a walking path and gym for community use	382007629	Hayes Green Beach Memorial Hospital	2017	MI
rehabilitation	glenbeigh is paid a prospectively determined rate for the majority of rehabilitation services provided for medicaid	383975135	Glenbeigh Health Sources	2019	OH
rehabilitation	glenbeigh is paid a prospectively determined rate for the majority of rehabilitation services provided for medicare	383975135	Glenbeigh Health Sources	2019	OH
rehabilitation	the volunteer association runs a hospitality house in which family members of patients are offered free housing during their loved ones extended hospital stay and rehabilitation	390816848	Mercy Walworth Hospital & Medical Center	2013	WI
rehabilitation	vincent's infirmary rehabilitation hospital, and baptist health rehabilitation; four psychiatric or drug rehabilitation facilities; three long term acute care hospitals and two veterans hospitals	710236856	Baptist Health Medical Center- Nlr	2011	AR

rehabilitation	patrick hospital provides cardiac and neurosurgical services along with other acute inpatient medical/surgical services and inpatient rehabilitation and neurobehavioral medicine	810231793	St Patrick Hospital	2014	WA
rehabilitation	bryan health provides a full spectrum of prevention, wellness, acute care and rehabilitation services to urban, suburban and rural communities in nebraska, kansas, iowa and missouri	820906268	Merrick Medical Center	2019	NE
rehabilitation	,part iii, line 8: inpatient care services, skilled nursing services, rehabilitation services, and certain outpatient services rendered to medicare program beneficiaries are paid at prospectively determined rates per diagnosis	941156276	Community Regional Medical Center	2012	CA
rehabilitation	community support for persons with disabilities - rehabilitation community exercise and rehab community follow-up programs - provides low cost and no cost exercise programs, communication recovery group and nurse follow-up to persons with a disability	951643325	St Jude Medical Center	2015	CA
rehabilitation	students engaged with many pediatric departments including neonatology, hospital medicine, gen peds, ed, rehabilitation, hematology/oncology and psychiatry	951690977	Childrens Hosp Of Los Angeles	2019	CA
suicide	our high school youth attempted suicide at twice the rate of the national average, 1 in 10 adults participated in binge drinking behavior in the last 30 days, and 1 in 4 people currently smoke in the city of bridgeport	60646886	St Vincents Medical Center	2012	CT
suicide	these have included groups focused on the most significant community health needs obesity/diabetes, tobacco/nicotine, and suicide/mental health along with those investigating emerging needs and responses, particularly trauma-informed communities	141338428	Ellis Hospital	2020	NY

suicide	within these areas, child and adolescent obesity, heart failure, diabetes, and copd were identified as the most pressing needs in chronic disease management; substance abuse and suicide prevention were identified as top needs in the meb health category	161012691	Canton-Potsdam Hospital	2020	NY
suicide	lawrence valley help address childhood obesity, suicide prevention, and mental health illnesses, as well as substance use prevention	161012691	Canton-Potsdam Hospital	2020	NY
suicide) support for youth suicide/substance misuse prevention by the hospital making a \$439,761 financial contribution through the nh foundation for healthy communities to support the nh bureau of drug and alcohol services for their programs to combat addiction and substance misuse disorder	222674014	Exeter Hospital Inc	2020	NH
suicide	areas seeing improvement in king county, but still needing improvement, include incidence of stroke, colorectal cancer death, lung cancer death, suicide, smoking cessation, vaccinations, aids incidence and seatbelt use	272305304	Swedish Edmonds	2014	WA
suicide	low birthweight and preterm deliveries), reduce infant mortality, reduce suicide rate, reduce substance abuse, and increase access to health care	341883284	Lima Memorial Hospital	2016	OH
suicide	suicide prevention: members of our mental health hospital travel around the region to provide suicide prevention training to schools, churches, non-profit groups, etc	350593390	Deaconess Hospital Inc	2012	IN
suicide	these include depression (or depressive disorder), social and emotional support, suicide, and financial stress	350868130	Marion General Hospital	2012	IN
suicide	st michaels hospital is involved in suicide prevention working in conjunction with portage county and participates in other community efforts such as the hiv/aids ministry project, the hunger prevention coalition, elder abuse education/prevention and a support group at oakridge senior center	390808443	Ministry St Michaels Hospital Of Stevens Point	2011	WI

suicide	another recent initiative is include which focuses on building inclusiveness and tolerance to prevent suicide among the gay, lesbian, bisexual, transgender population	390824015	Thedacare Regional Medical Center Ap	2013	WI
suicide	cancer, heart disease, lung disease, diabetes, infant health problems, suicide, alcohol and substance abuse, and stroke as the major health concerns for the area, with obesity, smoking and secondhand smoke, and child abuse/neglect among the prime risk factors	431240629	Freeman Neosho Hospital	2021	MO
suicide	this series will continue in fy19 with more conversations surrounding depression and anxiety (men, seniors, chronic disease and suicide prevention) as well as a focus on early childhood experiences and resilience	462097818	St Joseph Medical Center	2017	MD
suicide	(community health need: mental and emotional health/substance abuse) behavioral health awareness: sth provided leadership to the hickman suicide prevention taskforce in fiscal year 2019, as it sought to reduce suicides and increase awareness that depression is the #1 risk factor for suicide	581737573	St Thomas Hickman Hospital	2018	TN
suicide	several awareness events were held in fiscal year 2019; the goal of awareness events is to reduce the stigma of mental illness/emotional issues in addition to reducing suicide	581737573	St Thomas Hickman Hospital	2018	TN
suicide	the hospital has a staff person who participates as a part of a local suicide & bullying prevention coalition and gives time to local awareness activities such as the annual suicide memorial vigil	742517055	Schoolcraft Memorial Hospital	2012	MI
suicide	examples included: - chippewa valley youth mental health summit- suicide the ripple effect - qpr training of trainersadvocacy for community health improvements and safetymmc-ec collaborated with community organizations and groups for community health improvements and safety	810977948	Marshfield Medical Center	2020	WI

suicide	examples include: child and youth behavioral health: colorado is in a state of crisis for child and youth behavioral health, with suicide as the leading cause of death for young people ages 10-24	840166760	Childrens Hospital Colorado	2019	CO
suicide	more than 80% of youth who die by suicide have seen their primary care provider within a year of their death, many within the previous month	840166760	Childrens Hospital Colorado	2019	CO
suicide	pcmh is coordinating with national, state, and local thought leaders to create a suicide prevention strategy that includes the evidence based zero suicide model and a pediatric care pathway focused on universal suicide screening of all pediatric patients	840166760	Childrens Hospital Colorado	2019	CO
suicide	as part of this work, pcmh partnered with the zero suicide institute to host a first-of-its-kind zero suicide academy focused on youth suicide prevention in primary care	840166760	Childrens Hospital Colorado	2019	CO
suicide	suicide death rate, age-adjusted per 100,000 persons, 2016the rate of death by suicide in adams county is 17	840482695	Platte Valley Medical Center	2020	CO
suicide	2 deaths per 100,000 persons from suicide	840482695	Platte Valley Medical Center	2020	CO
suicide	also, two leading causes of death in gila county include death by suicide and drug induced death	860732836	Cobre Valley Regional Medical Center	2021	AZ
suicide	john's episcopal project truro council on aging veterans outreach council visiting nurse association of cape cod women and adolescent health at community health center of cape cod ymca of cape cod youth suicide prevention project,hospital and falmouth hospital	900054984	Cape Cod Hospital	2012	MA
suicide	of these, 14 were referred post discharge for suicidal ideation, 1 post-discharge after a suicide attempt	941156621	Sutter Amador Hospital	2018	CA

suicide	the director of community benefit also cofounded the community suicide prevention initiative with the goal of increasing awareness and accessibility to available resources, hosting community educational events, and reducing suicide in orange county	951643327	Hoag Memorial Hospital Presbyterian	2021	CA
support group	support groups/bereavement to address mental health, mah led a support group that provides people space, in a safe and supportive environment, to share their feelings and stories with others who are going, or have gone, through the loss of a loved one	42103606	Mount Auburn Hospital	2018	MA
support group	a total of 43 community members participated in three, eight-week long support group sessions	42103606	Mount Auburn Hospital	2018	MA
support group	a post-partum drop-in support group is also available to community members	42103606	Mount Auburn Hospital	2018	MA
support group	jamaica hospital offers a monthly support group that consists of interactive sessions that aim to educate diabetic patients with lifestyle and professional recommendations from our highly qualified physicians, therapists, podiatrists, dieticians, and other clinical specialists	111631788	Jamaica Hospital Medical Center	2018	NY
support group	providers conduct stroke education, in addition to the support group, on a regular schedule for emergency medical services providers in our service area, as well as for general community members	160743192	Soldiers And Sailors Memorial Hospital Of Yates	2015	NY
support group	a support group can help some people cope better and feel less isolated	237218917	Monongahela Valley Hospital Inc	2020	PA
support group	all support group meetings were suspended during 2021 due to the covid-19 pandemic	237218917	Monongahela Valley Hospital Inc	2020	PA
support group	alzheimer's support group	237218917	Monongahela Valley Hospital Inc	2020	PA
support group	this free support group is designed to help the family members, friends and caregivers of those suffering from alzheimer's disease and other form of dementia	237218917	Monongahela Valley Hospital Inc	2020	PA

support group	diabetes support group	237218917	Monongahela Valley Hospital Inc	2020	PA
support group	ostomy support group	237218917	Monongahela Valley Hospital Inc	2020	PA
support group	this support group is free and open to all persons with ostomies and their families and friends	237218917	Monongahela Valley Hospital Inc	2020	PA
support group	prostate cancer support group	237218917	Monongahela Valley Hospital Inc	2020	PA
support group	all prostate cancer patients, families and caregivers are invited to attend this free support groupsuicide bereavement support group	237218917	Monongahela Valley Hospital Inc	2020	PA
support group	weight loss and wellness support group	237218917	Monongahela Valley Hospital Inc	2020	PA
support group	this support group helps educate, inform and provide a well-rounded foundation of knowledge for long-term success of those who have had weight-loss surgery	237218917	Monongahela Valley Hospital Inc	2020	PA
support group	throughout 2012, elkhart general hospital's dame tu mano hispanic latino health outreach program held monthly spanish language diabetes education and support group programs for diabetic adult hispanic latino community members	350877574	Elkhart General Hospital	2012	IN
support group	care for the children of the participants was provided through a series of age-appropriate health education sessions concurrently provided during the adult support group education	350877574	Elkhart General Hospital	2012	IN
support group	-parkview whitley birth planner conducts breastfeeding education and a support group for new moms	351967665	Whitley Memorial Hospital	2015	IN
support group	agencies include united way, alzheimer's association, lion's board, parkinson's support group, gambler's anonymous, harbor house, epilepsy support group, grow and several others	362414944	Riverside Medical Center	2010	IL

support group	individuals providing assistance to those with dementia-related conditions or alzheimer's disease attend the dementia caregivers support group	370792770	Greenville Regional Hospital	2011	IL
support group	family members are welcome to attend the support group sessions and benefit from the information presented and the social interaction that takes place	370792770	Greenville Regional Hospital	2011	IL
support group	women undergoing treatment for cancer are invited to the look good, feel better support group	370792770	Greenville Regional Hospital	2011	IL
support group	various employees are involved in the promotion of the american cancer society relay for life, the american heart association heart walk, alzheimer's association walk, memory loss support group, and free prenatal classes	420932564	Hegg Memorial Health Center	2011	IA
support group	we provided meeting space for several community health groups including butler county diabetes support group, the american cancer society, and the butler county multiple sclerosis support group	480581968	Susan B Allen Memorial Hospital	2012	KS
support group	the teens as parents program, works with teens who are pregnant or have had babies to provide additional support by the means of home based visits and support group meetings	560603898	Betsy Johnson Regional Hospital	2016	NC
support group	we participate in the community care coordination task force, monthly diabetes support group, breckinridge county coalition, chamber of commerce, career fairs at the local schools, and the phantom project, which reached over 100,000 people across the country	610525158	Breckinridge Memorial Hospital	2021	KY
support group	community outreach for the poor the better breather's club the better breather's club is a free social/educational support group for patients, their families and/or friends with chronic lung disease such as copd	611334601	Saint Joseph Hospital	2010	KY
support group	the healthy hearts club the healthy hearts club is a free educational support group for patients with heart disease and their families/friends	611334601	Saint Joseph Hospital	2010	KY

support group	services provided by new outlook include counseling, regular support group meetings at multiple locations, wigs and headwear, cosmetic makeovers, access to a medical library, stress management classes, mastectomy and lymphedema services, and referrals to physicians for various services	710236917	St Vincent Infirmary Medical Center	2017	AR
support group	finally, a monthly support group serves an average of 6 people at each session	710236917	St Vincent Infirmary Medical Center	2017	AR
support group	narmc provides one-on-one education with a clinical pharmacist and/or dietician for patients as well as quarterly support group education	710787860	North Arkansas Regional Medical Center	2020	AR
support group	bariatric support group obesity has emerged as the second leading cause of preventable deaths in america today	743107055	St Vincent Carmel Hospital Inc	2014	IN
support group	luke's health memorial san augustine offers space for a support group	752663904	St Lukes Health Memorial San August	2014	TX
support group	the hospital also partners with the following community groups: cancer support group, panola college lvn nursing programs and phlebotomy programs, and with area high schools health careers programs which allow high school students to participate in clinical studies at the hospital	752663904	St Lukes Health Memorial San August	2014	TX
therapy	each year, mcvi hosts the international symposium on endovascular therapy, with more than 800 cardiac and vascular specialists in attendance	43775926	Doctors Hospital	2020	FL
therapy	the institute is home to one of the most comprehensive and advanced radiation oncology programs in the world, including south florida's first proton therapy center, one of under two dozen proton therapy centers in the nation	43775926	Doctors Hospital	2020	FL
therapy	the precision of proton therapy allows doctors to target cancer cells without damaging healthy tissue and vital organs	43775926	Doctors Hospital	2020	FL

therapy	to meet increased community demand for physical therapy services, miami orthopedics & sports medicine institute was opened to provide additional capacity at a convenient, off-site location	43775926	Doctors Hospital	2020	FL
therapy	these facilities will provide a multitude of services ranging from physician offices, physical therapy, endoscopies, diagnostic imaging, and urgent care	43775926	Doctors Hospital	2020	FL
therapy	these services encompass the full spectrum of cancer care and include community outreach, screening and prevention, diagnostic services, surgical and medical oncology, radiation therapy, interventional oncology, clinical trials, dedicated inpatient and outpatient cancer units, palliative care, genetic counseling and pain management	60646886	St Vincents Medical Center	2015	CT
therapy	services provided free were medical exams; point of care testing; behavioral health care; shoe, coat, and reader eyeglass distribution; foot washing and podiatry; physical therapy; flu shots and vaccinations; nutrition and smoking cessation counseling; medication dispensing; and child care	60646886	St Vincents Medical Center	2015	CT
therapy	physical, occupational, speech/language and aquatic therapy are all offered as part of each student's individualized education plan	60646886	St Vincents Medical Center	2015	CT
therapy	what are the top health issues for you and your family? access - insurance cost and confusion, insurance having it and keeping it, finding family physicians, therapy services (pt, ot), dental	150532245	St Elizabeth Medical Center	2016	NY
therapy) united memorial also enjoys strong partnerships with genesee community college for workforce development by allowing the clinical training for nursing and respiratory therapy students to be conducted at the hospital and providing staff mentors	160743029	United Memorial Medical Center	2014	NY

therapy	the clinical pharmacy, radiology and physical therapy departments were also host to a number of students from suny brockport, daemen college, and the university of buffalo	160743029	United Memorial Medical Center	2014	NY
therapy) the hospital provided educational rotations for students in various health care fields, as well as educational opportunities for students from multiple area universities and colleges training as nurses, nurses aides, and respiratory therapy	161137084	Eastern Niagara Hospital	2013	NY
therapy	focuses include nursing, ultrasound, respiratory therapy, physical therapy and pharmacy	161492011	Oneida Healthcare Center	2021	NY
therapy	notification of the financial assistance policy will be posted at each registration site including but not limited to the hospital registration department, the emergency room, lab draw stations, physical therapy building, the gorman building and at the clinics	161492011	Oneida Healthcare Center	2021	NY
therapy	pediatric proton beam therapy and multi-disciplinary care for unborn babies with genetic abnormalities)	231352166	The Childrens Hospital Of Philadelp	2017	PA
therapy	hhi also provided art therapy to mothers and children as part of its outreach	231352166	The Childrens Hospital Of Philadelp	2017	PA
therapy	bon secours hospitals operate trauma services, air ambulance services, disease management, wound care, specialty clinics, developmental therapy, hospice, home care, crisis intervention, behavioral services and substance abuse services	237424835	Rappahannock General Hospital	2018	VA
therapy	in 2010, 2,675 hours of therapy have been offered in four languages: tagalog, spanish, english and polish	362596381	Alexian Brothers Medical Center	2010	IL
therapy	-provided clinical rotation site for medical students, nurse practitioners, nursing, and physical therapy students	430715842	Pershing Memorial Hospital	2012	MO

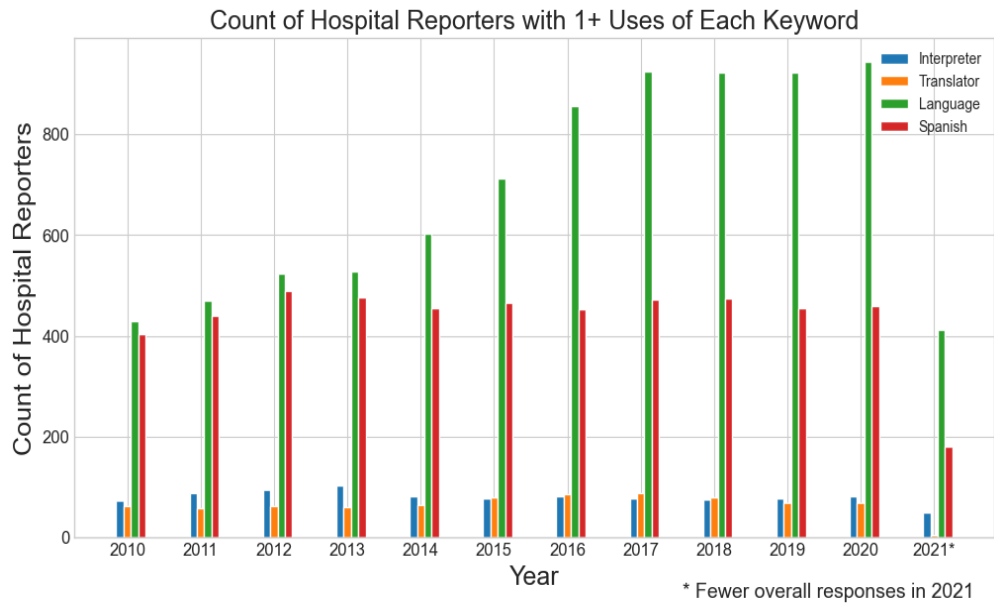
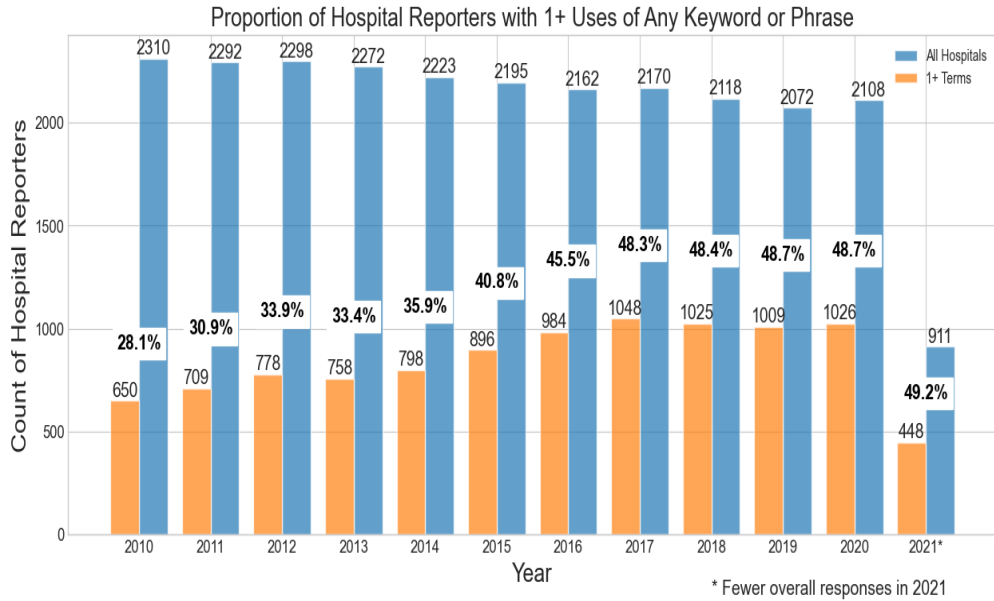
therapy	hospital week, annual public event done at the local (brookfield) ymca and at marceline walsworth center: -processed blood draws; physical therapy health booth; blood pressures and pulse oximetry tests were performed	430715842	Pershing Memorial Hospital	2012	MO
therapy	coxhealth's home care services are provided by coxhealth at home and include home health services, infusion therapy and durable medical equipment	440584290	Cox Medical Center Branson	2019	MO
therapy	infusion therapy received a second grant award from the missouri foundation for health organization	440584290	Cox Medical Center Branson	2019	MO
therapy	these categories include medical students, nursing students and other health professions, such as physical therapy, social work, pharmacy, and pastoral care students	454243702	St Vincent Fishers Hospital	2016	IN
therapy	the hospital participates in education and training of healthcare professionals through residencies and internships for nursing students, therapy students, physicians and physician's assistants	460228038	Madison Regional Health System	2010	SD
therapy	- carenet - a partner of faithhealth that provides faith integrated counseling and therapy- faithhealth innovations (fka center for congregational health) - provides ministry and training to faith communities, lay leaders and clergy	560552787	North Carolina Baptist Hospital	2021	NC
therapy	the system uses stereotactic radiosurgery, a form of radiation therapy that allows precisely focused, high-dose x-ray beams to be delivered to a small, localized area of the brain or spinal cord	590624462	Morton Plant North Bay Hospital	2010	FL
therapy	services also include acute and intensive care; general surgery; outpatient surgical services; physical, occupational and speech therapy; diabetes treatment; diagnostic services including mri, radiology and nuclear medicine; outpatient laboratory; cardiopulmonary services, and oncology services	611334601	Saint Joseph Hospital	2013	KY

therapy	in fiscal year 2014, the program made 12,067 contacts with individuals, including 488 for medical nutritional therapy, 952 for diabetes treatment, and 961 professional contacts and referrals	611334601	Saint Joseph Hospital	2013	KY
therapy	health professionals include medical students, family practice residents, pharm d students, physical therapy students, respiratory therapy students, radiology students, nursing students, social work students, surgical technicians, and students earning master's degrees in public health	611334601	Saint Joseph Hospital	2013	KY
therapy	health professions education saint joseph martin serves as a clinical education site for medical students, pharm d students, physical therapy students, respiratory therapy students, radiology students, nursing students, social work students, and high school students interested in pursuing a career in health care	611334601	Saint Joseph Hospital	2013	KY
therapy	additionally, the 35-acre prmc campus includes an ambulatory care center complete with outpatient surgery, imaging, laboratory, infusion services and rehabilitation services including a large indoor heated therapy pool as well as a regional wound healing center	742557820	Peterson Regional Medical Center	2012	TX
therapy) a total of 51 physical therapy, speech therapy, occupational therapy, social work and psychology interns from howard college and angelo state were supervised at a shannon clinical site	752559845	Shannon Medical Center	2014	TX
therapy	the eureka clinic also provides a location for specialists in women's health, hearing, physical therapy, cardiology, orthopedics and urology to meet with patients on regular schedules without the patients having to travel far for services	810247969	North Valley Hospital	2013	MT

therapy	river hospital was the healthcare provider at the hood plant annual employee/family health fair and offered flu vaccines, physical therapy techniques, blood pressure checks, proper nutrition guidelines as well as information to improve/maintain good health and general river hospital services information	810600548	River Hospital, Inc	2021	NY
therapy	physical, occupational and speech therapy partners:1	941461843	John Muir Medical Center - Walnut Creek Campus	2013	CA
therapy	community benefits also include health professions education programs for students interested in the areas of nursing, physical therapy, ultrasound technology, radiologic technology, rehabilitation and clinical pastoral care	941461843	John Muir Medical Center - Walnut Creek Campus	2013	CA

CBI Query on 2024-05-24 by RTI International

Keywords: interpreter, translator, language, spanish



Keyword	Example Sentence	EIN	Hospital Name	Tax Year	F990 State
interpreter	in fy 2015 baystate health's interpreter and translation services provided over 196,684 sessions in 70 languages to help deliver a positive patient care experience	42103584	Baystate Mary Lane Hospital	2014	MA
interpreter	interpreter sessions included in person, telephonic and video interpreting for american sign language	42103584	Baystate Mary Lane Hospital	2014	MA
interpreter	baystate health also contracts with local agencies to provide in-person interpreter services as needed for patients who come to baystate medical center for pre-scheduled appointments or for emergencies for languages not covered by staff interpreters, such as swahili	42103584	Baystate Mary Lane Hospital	2014	MA
interpreter	1 continue interpreter services program4	42103881	Beth Israel Deaconess Medical Center	2016	MA
interpreter	provide skilled, reliable interpreter services to increase access to care for families whose primary language is not english	42156082	Franciscan Childrens Hospital & Rehab Center	2015	MA
interpreter	these programs, including but not limited to patient navigation, interpreter services, and a food pantry, help reduce barriers to accessing health services and eliminate disparities in health care among the various populations bmc serves	43314093	Boston Medical Center	2011	MA
interpreter	advocates provided these services in four languages, utilizing interpreter services for additional language needs, and the program's primary informational brochure about where to find help for domestic violence is now available in 14 languages	43314093	Boston Medical Center	2016	MA

interpreter	to address this diversity, the hospital provides staff training in cultural diversity, interpreter services, dietary variety and other accommodations to support families from different cultural backgrounds while their children are patients at blythedale	131739922	Blythedale Childrens Hospital	2020	NY
interpreter	interpreter services: as our population becomes more diverse with burmese and bosnian refugees and spanish speaking residents, there is a greater demand for interpreter services	161471634	Rome Memorial Hospital, Inc	2013	NY
interpreter	in the event an interpreter is needed to assist a patient who does not speak english, one can be provided	240786657	Memorial Hospital, Inc Towanda	2010	PA
interpreter	language line interpreter services are provided at no cost to patients and their families	340505560	St Elizabeth Health Center	2013	OH
interpreter	the staff is fluent in english and spanish and serves a vital role in accompanying clients to appointments to serve as a guide, interpreter and support person	340505560	St Elizabeth Health Center	2013	OH
interpreter	allina has a system wide interpreter services team that provides interpreters to patients, companions and families who have limited english proficiency (lep) or are deaf or hard of hearing (dhh)	363261413	Cambridge Medical Center	2018	MN
interpreter	my accessible real time trusted interpreter (martti) is available at all of sjp hospitals to eliminate the communication barriers between the hospital staff and patients who have lep, or are deaf or hard of hearing	383160564	St John River District Hospital	2014	MI
interpreter	the communication process is supported by interpreter services as needed	390812532	Childrens Hospital Of Wisconsin	2014	WI
interpreter	fairview provides an interpreter service that interprets conversations over the phone	410991680	Fairview Southdale Hospital	2017	MN
interpreter	this service can be used either as a three way phone call or the financial counselor, in a room with the patient or family can place the call together to the interpreter phone service	410991680	Fairview Southdale Hospital	2017	MN

interpreter	the interpreter services line accommodates close to 200 languages	410991680	Fairview Southdale Hospital	2017	MN
interpreter	as such, children's provides interpreter services for forty-six languages with the most frequent languages being spanish, somali, and hmong	411754276	Childrens Health Care	2011	MN
interpreter	through december 2011 the othe delivered 120,374 interpreter encounter (108,000 hours of interpreter service) across inova facilities	540525802	Inova Loudoun Hospital Center	2011	VA
interpreter	spanish speaking patients are offered assistance through our onsite spanish interpreter and the hospital also has access to language lines, as service for non-english conversations	566000674	Lenoir Memorial Hospital	2020	NC
interpreter	our efforts to inform non-english speaking patients about the financial assistance policy is provided by an interpreter through the use of language line, a telephone interpretation service	581734026	Upson Regional Medical Center	2018	GA
interpreter	monthly an interpreter works side by side with an average of 45 families with partner agency clinicians, serving as the family's interpreter and offering advice and information regarding other resources to spanish speaking families	582504530	St Francis-Downtown	2016	SC
interpreter	the information is provided in english and spanish and interpreter services for other languages are available as needed	630288861	Providence Hospital	2011	AL
interpreter	the hospital employs spanish speaking financial counselors and would utilize interpreter services for other languages	840175870	Boulder Community Hospital	2016	CO
interpreter	community based interpreter services the community based interpreter services program offers free medical language interpretation in community-based physician practices and at the community health centers for the limited and non-english speaking patients and their families	900054984	Cape Cod Hospital	2010	MA

interpreter	the availability of proficient and professional interpreter services ensures the delivery of safe quality health care and positive clinical outcomes	900054984	Cape Cod Hospital	2010	MA
language	educate & inform: -the uvm medical center patient assistance (charity) program is referenced on the uvm medical center public website, along with guidelines, criteria, frequently asked questions, a copy of our policy/plain language summary and a downloadable application	30219309	University Of Vermont Medical Center	2013	VT
language	at the time of registration check-in a copy of the plain language policy summary is provided to all patients who are uninsured, or have or will have a balance	30219309	University Of Vermont Medical Center	2013	VT
language	-within the physician clinics, plain language policy summaries are distributed to all uninsured and underinsured and the full policy with applications are available for patients upon request	30219309	University Of Vermont Medical Center	2013	VT
language	the notice includes a plain language summary of the hospital's financial assistance policy	201645949	Cedars-Sinai Marina Del Rey Hospital	2018	CA
language	b) notices hand-delivered to patients - during the registration or admission process (or otherwise prior to discharge), patients are provided a plain language summary of the financial assistance policy and cedars-sinai marina del rey's financial assistance programs	201645949	Cedars-Sinai Marina Del Rey Hospital	2018	CA
language	the financial assistance policy, the application form and the plain language summary are available on the hospital's website at https://www	201645949	Cedars-Sinai Marina Del Rey Hospital	2018	CA
language	billing process in health arnett includes a plain language summary of its financial assistance policy with all patient bills and statements of services	263162145	Iu Health Arnett Hospital	2014	IN
language	the plain language summary includes contact information allowing patients the ability to request financial assistance	263162145	Iu Health Arnett Hospital	2014	IN

language	such signs shall be prepared in english, spanish, and any other language that is the primary language of at least 5% of the patients served by the hospital annually	362167800	Presence Saint Francis Hospital	2010	IL
language	patient demographics are diverse and include a large number of families whose primary language is not english, demonstrated by the fact that lurie children's spent over \$1 million in translation services in fy2021	362170833	Ann & Robert H Lurie Childrens Hos	2020	IL
language	-provide the individual with a plain language summary of the hap with the written notice described above	370618939	Herrin Hospital	2019	IL
language	-registrars inform all patients of the healthcare assistance program, and offers a plain language summary	370618939	Herrin Hospital	2019	IL
language	the financial assistance policy was also translated into dialects prevalent in the community in order to reach out to those that may speak another language (spanish and hmong)	390905385	Ascension Calumet Hospital	2020	WI
language	,the financial assistance policy (fap), financial assistance application form (faa form), and the plain language summary of the financial assistance policy (pls) of the filing organization's hospital facility are transparent and available to all individuals served at any point in the care continuum	391365168	Chippewa Valley Hsptl	2018	WI
language	providing a plain language summary identifying the ecas that the hospital may take if needed, and stating a deadline after which ecas may be initiated that is no earlier than 30 days after the date when the written notice is provided	420733472	St Anthony Regional Hospital	2020	IA
language	appropriate resources are used to provide effective communication with non-english speaking patients including cyracom language line system that provides 24-hour access to several hundred different language interpreters	470376604	Nebraska Methodist Hospital	2012	NE
language	29%ninety-five percent of cecil county was non-hispanic with 96% of the population speaking english as a first language	520607945	Union Hospital Of Cecil County	2014	MD

language	all public information and/or forms regarding the provision of financial assistance will use languages that are appropriate for the facility's service area in accordance with the state's language assistance services act	521289729	Laurel Regional Medical Center	2016	MD
language	- language: english speaking 94	630288864	St Vincents Birmingham	2016	AL
language	(population by language spoken at home) - there are 89 federally designated medically underserved areas (mua's) in the state and 19	630288864	St Vincents Birmingham	2016	AL
language	these services are provided in writing and through interpretation services in the primary language of the patient requesting assistance	741166904	Scott & White Memorial Hospital	2018	TX
language	the organization can also accommodate other languages including american sign language as needed	741166904	Scott & White Memorial Hospital	2018	TX
language	denver county also has the highest incidence of a language other than english spoken at home at 28	840417134	Saint Joseph Hospital	2012	CO
language	languages: the policy shall be available in the primary language(s) of hospital's service area	941080917	Sutter Tracy Community Hospital	2016	CA
language	in addition, all notices/communications provided in this section shall be available in primary language(s) of hospital's service area and in a manner consistent with all applicable federal and state laws and regulations	941080917	Sutter Tracy Community Hospital	2016	CA
language	emergency services: in the case of emergency services, hospitals shall provide all patients a plain language summary of the financial assistance policy as soon as practicable after stabilization of the patient's emergency medical condition or upon discharge	941080917	Sutter Tracy Community Hospital	2016	CA
language	applications provided at discharge: at the time of discharge, hospitals shall provide all patients with a copy of a plain language summary of the financial assistance policy	941080917	Sutter Tracy Community Hospital	2016	CA

language	upon request: hospitals shall provide patients with paper copies of the financial assistance policy, the application for financial assistance, and the plain language summary of the financial assistance policy upon request and without charge	941080917	Sutter Tracy Community Hospital	2016	CA
language	website: the financial assistance policy, application for financial assistance and plain language summary shall be available in a prominent place on the sutter health website (www	941080917	Sutter Tracy Community Hospital	2016	CA
language	mail: patients may request a copy of the financial assistance policy, application for financial assistance and plain language summary be sent by mail, at no cost to the patient	941080917	Sutter Tracy Community Hospital	2016	CA
language	the five include income, culture/language, education, housing status, and insurance coverage	941156295	Saint Francis Memorial Hospital	2017	CA
language	, * community support- dameron hospital contributes to increasing health literacy by providing educational materials with pictorial and plain language information at all of our community events and health fairs	941201197	Dameron Hospital	2014	CA
language	according to the us census (2011), almost 40% of all county residents speak a language other than english at home, and nearly one in four over the age of 25 does not have a high school diploma	941201197	Dameron Hospital	2014	CA
language	english as a second language all financial assistance forms are available in spanish in addition to the availability of bilingual staff in all admitting and registration areas, eligibility services and the business office	951115230	Pomona Valley Hospital Med Ctr	2011	CA
language	the staff in all patient access and billing areas has been trained on accessing external interpretative services when patients speak a language other than english and spanish	951115230	Pomona Valley Hospital Med Ctr	2011	CA

language	this is also the same information provided on the state oshpd website (fap, faa and plain language summary)	951644036	Huntington Hospital	2018	CA
spanish	a website link to the survey (in both english and spanish) was made available from january through february 2013	42790311	Baystate Medical Center	2012	MA
spanish	spanish was the top non-english language reported	42790311	Baystate Medical Center	2012	MA
spanish	signs about the availability of financial assistance programs at baystate medical center are translated into spanish, because spanish is primarily spoken by 10% or more of the residents in the hospital's service area	42790311	Baystate Medical Center	2012	MA
spanish	languages interpreted include spanish, russian, vietnamese, ukrainian, mandarin (chinese), american sign language, arabic and portuguese	42790311	Baystate Medical Center	2012	MA
spanish	baystate health interpreter services also assisted the city of springfield fire department with the translation of fire safety documents and to provide fire safety education in spanish, russian, vietnamese and nepali	42790311	Baystate Medical Center	2012	MA
spanish	said notices are published in at least english and spanish, and are clearly visible to the public from the location at which they are posted	61562701	St Catherine Of Siena Hospital	2010	NY
spanish	signs are posted in both english and spanish	210634572	Robert Wood Johns on University Hospital Hamilton	2010	NJ
spanish	the postings are printed in english and spanish and are located in admissions areas, the business office, and the emergency department	314379491	Holzer Medical Center	2012	OH
spanish	in support of a highly diverse patient population, children's minnesota provided interpreter services for 69 languages with the most frequent languages being spanish, somali, and karen	411754276	Childrens Health Care	2020	MN

spanish	in addition, interpreters are available to those needing assistance, primarily in spanish	421336618	Mercy Medical Center-Clinton	2011	IA
spanish	pre-survey postcards were mailed via first class mail on december 24, 2015, informing potential respondents about the chna, asking them to watch for and complete their surveys and giving them the opportunity to request the survey in spanish or vietnamese, if preferred	480958974	Kansas Surgery & Recovery Center	2017	KS
spanish	- when patients are registering in the hospital for inpatient treatment or outpatient treatment, they are given the patient financial information sheet (appendix iii) that is printed on two sides in english and spanish	521362793	University Of Maryland Med Sys	2014	MD
spanish	financial assistance application and instructions cover sheet is available in russian and spanish	521372665	Northwest Hospital Center	2019	MD
spanish	such notices and summary information shall include a contact number and shall be provided in english, spanish, and other primary languages spoken by the population served by an individual hospital facility, as applicable	611345363	Flaget Memorial Hospital (Member Of Saint Joseph H	2016	KY
spanish	the cards and signage are provided in english and spanish	711045290	Houston Medical Center	2020	GA
spanish	4% spanish; 1	741385192	Brazosport Regional Health System	2020	TX
spanish	the facility has also posted specifics about available financial assistance at registration, in patient waiting areas, on the website and in a summary printed in english and spanish that is inserted into each patient's registration packet	750818178	Texas Scottish Rite Hospital For Children	2020	TX
spanish	available in both english and spanish, over 700 pieces of education are available for staff use to provide to patients and families	750818178	Texas Scottish Rite Hospital For Children	2020	TX

spanish	these notices were posted in english and spanish and any other languages that were representative of 5% or greater of patients in the hospital's service area	752765566	Covenant Medical Center	2018	TX
spanish	org/billing(b) all notices are translated into the following language: spanish(c) st	841421665	St Lukes Wood River Medical Center	2017	ID
spanish	the policy and application form are available in english and spanish	900756744	Memorial Medical Center	2020	IL
spanish	the "peace of mind regarding payment" brochure is available to every patient at every visit and is available in both english and spanish	900756744	Memorial Medical Center	2020	IL
spanish	in addition, harrison medical center prominently displays its financial assistance policy in both english and spanish in obvious locations throughout the hospitals, including the emergency rooms and other patient intake areas, as well as in harrison medical center outpatient facilities	910565546	Harrison Medical Center	2014	WA
spanish	all application materials are available in both english and spanish and interpretative services are available for non-english speaking patients through various electronic devices	931329784	Samaritan Pacific Comm Hospital	2017	OR
spanish	3% speak spanish at home (9% of which do not speak english at all) and 15	941196176	Alta Bates - Herrick Hospital	2011	CA
spanish	1% speak spanish at home (9% of which do not speak english at all)	941196176	Alta Bates - Herrick Hospital	2011	CA
spanish	this class is offered in english and spanish and is available to every new patient	951683875	City Of Hope National Medical Ctr	2013	CA
translator	the hospital provides translator services for several other languages and this service may be accessed for those individuals whose primary language is not english or spanish	42103581	Heywood Hospital	2017	MA
translator	services of a translator are available for patients who do not speak english	141372647	Moses-Ludington Hospital	2010	NY

translator	services of a translator are available for non-english speaking or hearing impaired patients	141372647	Moses-Ludington Hospital	2015	NY
translator	language interpretation is available for approximately 220 languages at the medical center through use of a commercial service that provides a live translator 24/7 free of charge to the patient and family	221487322	Holy Name Medical Center	2014	NJ
translator	if a patient requires an interpreter, sign language interpreter or a translator, the patient is directed to contact the patient representative office at (732) 321-7566 or ask the admitting clerk or nurse for assistance	226019101	Jfk Medical Ctr - Anthony M Yelencsics Community	2017	NJ
translator	patients with limited english proficiency are provided with a translator as needed	381359063	St John Hospital And Medical Center	2012	MI
translator	they donate their time and expertise during and after business hours; * provided free translator service to those patients that do not speak english; * provided training to regional staff in how to prepare patients for transport and other topics	390817529	St Vincent Hospital	2010	WI
translator	educate latina women in breast self examination with the assistance of a translator	520610538	Dorchester Genl Hosp	2012	MD
translator	educate latina women in breast self-examination with the assistance of a translator	520679694	Chester River Hospital Center	2017	MD
translator	the hospital uses a telephone service for patients who do not speak english and all questions during registration, including the need for financial assistance, go through the translator	582510435	Jasper Memorial Hospital	2010	GA
translator	the hospital uses a telephone service for patient who do not speak english and all questions during registration, including the need for financial assistance, go through the translator	582510435	Jasper Memorial Hospital	2015	GA
translator	the hospital uses a telephone service for patients who do not speak english and all questions during registration, including the need for financial assistance, go through the translator	582510435	Jasper Memorial Hospital	2020	GA

translator	phoenix children's medical interpreter/translator program is the national model to improve communication and safety with the hispanic population at 20 children's hospitals	860422559	Phoenix Childrens Hospital	2013	AZ
------------	-----------------------------------------------------------------------------------------------------------------------------------------------------------------------------	-----------	----------------------------	------	----