



Community Benefit Insight State Report

Georgia, 2024

What Is Community Benefit?

In exchange for their tax-exempt status, hospitals are required to provide community benefits. A **community benefit** is defined as a program or activity that provides treatment or promotes health and healing as a response to identified community needs. Community benefits have a special focus on disadvantaged populations and must be available to the broader community. According to the Internal Revenue Service (IRS), to count as a community benefit, a program or activity must respond to a demonstrated health-related community need and seek to achieve at least one of the following objectives:

- Increase access to health services.
- Enhance public health.
- Advance knowledge through education or research.
- Relieve or reduce the burden on government to improve health.

Community Benefit Insight Purpose

The Community Benefit Insight (CBI) website is a tool that provides data to the public on nonprofit hospitals' community benefit spending. The CBI site enables users to view critical information about how tax-exempt U.S. hospitals distribute community benefit expenditures to fulfill the hospitals' mission to meet tax-exempt regulatory requirements, understand the linkages between community benefit expenditures and community health needs, and inform conversations and partnerships between tax-exempt hospitals and other stakeholders.

A provision of the Affordable Care Act requires tax-exempt hospitals to undertake collaborative planning activities with their local communities through community health needs assessments (CHNAs). In addition to an assessment of health needs, CHNAs must result in corresponding implementation strategies that document how hospitals plan to respond to identified and prioritized needs. CBI is intended to complement these efforts by providing easy and transparent access to the community benefit financial reporting data that tax-exempt hospitals provide to the IRS each year.

Data

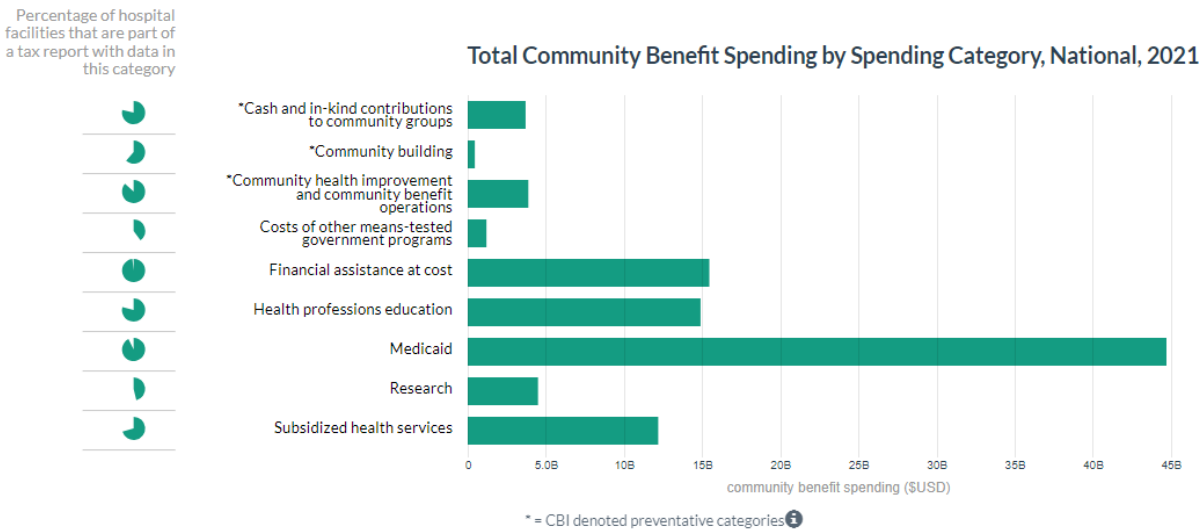
CBI presents community benefit expenditures as reported by 501(c)(3) tax-exempt hospitals on their tax form, Schedule H (Form 990), for 2010 through 2021 from hospitals in all 50 states and the District of Columbia. The Form 990 data include quantitative measures of spending and free-text responses that include important context for the spending. The CBI website content is drawn from governmental and hospital sources, including the Schedule H forms and hospital data from the Centers for Medicare & Medicaid Services. RTI International has also included information from other governmental sources such as the U.S. Census Bureau, which has been integrated to enable comparisons of the communities in which hospitals are located, and information on measures such as health insurance status and prevalence of poverty in the surrounding community.¹

Since 2012, tax-exempt hospitals have been required to report on how they carry out their CHNAs, including the planning process used and how the CHNA is made available to the public (before 2012, reporting this information was optional). A CHNA is now required every 3 years. Nonprofit hospitals now report on whether the facility has adopted and executed its implementation strategy, which is the community benefit plan developed to respond to the community needs identified in the CHNA process. The CHNA process must include community input, including input from people with expertise in public health. The CHNA process is intended to guide community benefit spending at the hospital level, but there is not a formal mechanism for review. The CBI dataset merges CHNAs and spending data to bring transparency to this process. CBI presents CHNA activities as reported by individual facilities to the IRS.

Community Benefit Insight Overview

CBI offers a national analysis of community benefit spending divided into community spending categories, with the data ranging from 2010 to 2021. IRS data are typically made available to the public about 18 months after submission, meaning CBI data may be delayed by about 2 years when they are updated. Data for the most recent available year may be incomplete and will be incrementally added as they become available. In 2021, the last year with complete data, CBI saw \$101 billion across 2,999 facilities. **Figure 1** shows how this spending was split among nine spending categories.

Figure 1. Total Community Benefit Spending by Spending Category



Explore data for other years at https://www.communitybenefitinsight.org/?page=state_analysis.home.

Spending Categories

Community benefit spending is reported in nine defined community spending categories:

Cash and In-Kind Contributions to Community Groups

These contributions are made by tax-exempt hospitals to health care organizations and other community groups restricted to one or more of the community benefit activities. In-kind contributions refer to donations of items or services. In-kind contributions for community benefit include the cost of staff hours donated by the organization to the community while on the organization’s payroll; the indirect cost of space donated to tax-exempt community groups; and the financial value of donated food, equipment, and supplies.

Community Building

Community-building activities help build the community’s capacity to address health needs and often address the “upstream” factors and social determinants that affect health such as education, air quality, and access to nutritious food. It should be noted that the financial reporting of community-building activities may be embedded within Community health improvement and community benefit operations.

Community Health Improvement and Community Benefit Operations

Community health improvement services are activities or programs subsidized by tax-exempt hospitals, carried out or supported for the express purpose of improving health. Such services do not generate inpatient or outpatient revenue, although there may be a nominal patient fee or a sliding-scale fee for these services.

Other Means-Tested Programs

Other means-tested programs are government-sponsored health programs where eligibility for benefits or coverage is determined by income or assets.

Financial Assistance at Cost

Financial assistance (also known as charity care) includes free or discounted health services provided to people who meet an organization's criteria for financial assistance and are unable to pay for all or a portion of the services. Financial assistance does not include bad debt, self-pay or prompt pay discounts, or contractual adjustments with any third-party payors.

Health Professionals Education

This category includes educational programs that result in a degree, a certificate, or training necessary to be licensed to practice as a health professional, as required by state law, or continuing education necessary to retain state license or certification by a board in the individual's health profession specialty. It does not include education or training programs available exclusively to the organization's employees and medical staff or scholarships provided to those individuals. However, it does include education programs if the primary purpose of such programs is to educate health professionals in the broader community.

Medicaid Shortfall

Medicaid is the U.S. health program for individuals and families with low incomes and resources. Primary oversight of Medicaid is handled at the federal level, but each state establishes its own eligibility standards; determines the type, amount, duration, and scope of services; and sets the rate of payment for services. For community benefit purposes, the

hospitals report the amount incurred by tax-exempt hospitals on the difference between the cost of care and what Medicaid pays.

Research

This category includes any study or investigation designed to increase general knowledge and that is made available to the public. For example, Research can include behavioral or sociological studies related to health, delivery of care, or prevention, or studies related to changes in the health care delivery system. The organization can include the cost of internally funded research and the cost of research it conducts funded by a tax-exempt or government entity. The organization cannot report research that is funded by a for-profit entity. Starting in tax year 2013, tax-exempt hospitals can no longer report restricted grants as a community benefit expense.

Subsidized Health Services

Subsidized health services are clinical services provided despite a financial loss to the tax-exempt hospital. A service meets an identified community need if it is reasonable to conclude that if the organization no longer offered the service

- the service would be unavailable to the community,
- the community's capacity to provide the service would be below the community's need, or
- the service would become the responsibility of the government or another tax-exempt organization.

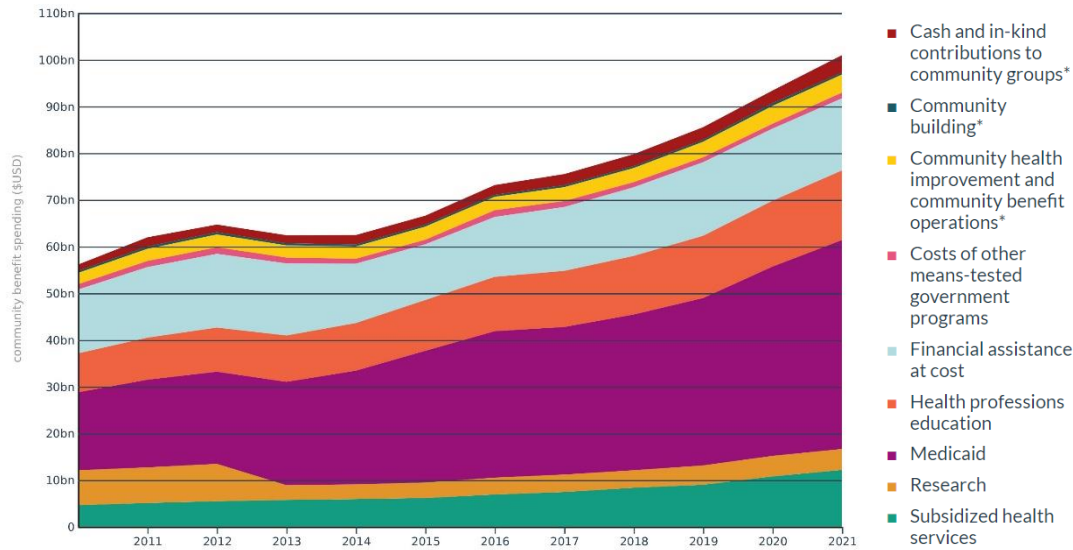
Depending on the individual community, examples could include inpatient programs such as neonatal intensive care or addiction recovery and outpatient programs such as satellite clinics designed to serve low-income communities or home health programs.

National Trends

Proportional spending in community benefit spending categories differs from state to state. Nationally, the largest proportion of spending was in Medicaid shortfall in 2021 at 44.3%. The change in spending by category is shown in **Figure 2**. From 2010 to 2021, the amount

of spending in Medicaid shortfall more than doubled. In fact, 62.5% of the overall change in spending, an increase of over \$28 billion, is attributed to Medicaid shortfall alone.

Figure 2. Change in Spending Category Amounts, 2010-2021.



Explore the data further at https://www.communitybenefitinsight.org/?page=national_analysis.home.

CBI has designated three categories of spending as “preventative,” specifically Community health improvement and community benefit operations, Cash and in-kind contributions to community groups, and Community building. Others, like the Low Institute, have made the case that some of the largest categories of spending should not be considered community benefit at all and exclude Medicaid shortfall from their calculations.² Medicaid shortfall, Health professions education, and Research all offer less direct benefit to local communities when compared with preventative categories. As shown in **Figure 2**, preventative categories make up a small fraction of overall community benefit spending.

Groups in the federal government have also raised concerns about insufficient spending in key categories. In 2023, a report from the Senate Committee on Health, Education, Labor, and Pensions noted that many of the largest nonprofit hospitals are failing to provide sufficient charity care (a common synonym for Financial assistance at cost) while receiving substantial tax breaks.³

Benefits of Preventative Spending

Preliminary research has shown that preventative spending has a tangible benefit on community health. A 2020 study that compared Medicare readmission data and community benefit spending found no statistically significant relationship between total spending and readmissions, but hospitals in the upper quintiles of preventative spending are associated with lower hospital readmission rates.⁴ The historical difficulties around accessing complete community benefit spending data have held back more extensive research on the relationship between individual spending categories and overall health outcomes.

Simply increasing the amount spent on community benefit is unlikely to significantly improve community health, especially if that spending is not in a preventative category. Here, hospitals would benefit from integrating the perspectives of local advocacy groups throughout decision-making processes. As we will explore as follows, targeted programs are far more likely to have evidence supporting their efficacy.

We partnered with SOWEGA Rising, a nonprofit coalition in Southwest Georgia that works to empower individuals and revitalize communities, to use the CBI dataset in support of its advocacy goals. What follows is a data-driven report of current spending practices in Georgia and a stakeholder-driven set of recommendations for hospital action.

Georgia Trends

Georgia has the third-largest proportion of Financial assistance at cost, often referred to as “charity care,” behind only North Carolina and Texas. As shown in Table 1, Georgia’s Financial assistance at cost proportion outpaces the nation’s by over 22%, with a corresponding decrease in Medicaid shortfall spending of almost 26%. The increased Financial assistance at cost spending may be the result of increased need across the state: according to one study, Georgia has the fifth-highest rate of medical debt at 12.7%.⁵ Although this may be the result of state-level factors—Georgia is one of 10 states that have not accepted federal funds for Medicaid expansion, and the state has the fifth-highest uninsured rate in the United States at 13.6%—local hospitals have a duty to implement policies that alleviate medical debt burdens.⁶

Another unfortunate finding is that Georgia lags in the critical categories of **Cash and in-kind contributions to community groups** and **Community building**. Combined, these account for less than 0.5% of total community benefit spending in Georgia, far less than the 4.12% of national spending. Community groups can use these state-level data in conjunction with hospital-level data found on <https://www.communitybenefitinsight.org/> to advocate for increased investments in preventative spending categories.

Table 1. National and State Spending Characteristics, 2021

Spending Category	Percentage of hospitals included on a tax report with spending in this category		Proportion of total community benefit spending in this category		
	National	Georgia	National	Georgia	Phoebe Putney
Cash and in-kind contributions to community groups*	78.5%	55.2%	3.67%	0.38%	0.33%
Community building*	61.3%	44.8%	0.45%	0.09%	0.42%
Community health improvement and community benefit operations*	86.6%	83.9%	3.84%	2.31%	2.04%
Costs of other means-tested government programs	39.9%	42.5%	1.19%	1.15%	7.89%
Financial assistance at cost	98.2%	98.9%	15.31%	37.53%	61.24%
Health professions education	79.0%	65.5%	14.75%	18.08%	2.79%
Medicaid shortfall	92.7%	81.6%	44.27%	18.66%	15.21%
Research	46.2%	21.8%	4.45%	6.71%	0.00%
Subsidized health services	70.5%	54.0%	12.07%	15.08%	10.09%

*Preventative spending categories

Supplemental Qualitative Reporting

Hospitals also submit free-response text in Parts V and VI of the IRS Schedule H (Form 990). These text responses allow reporting organizations to describe the activities that were funded under spending categories. Organizations may also report on spending that does not fall within the defined spending categories but that they believe creates a community benefit. Although this text contains important information contextualizing the spending figures, because of its unstructured and nonstandard format, it has been difficult to develop insights from this part of the CBI data aside from anecdotal evidence from individual hospitals. CBI researchers have attempted to create meaning from the text by using natural language processing to pull out broad thematic trends in community benefit spending. This analysis revealed 29 major themes in community benefit spending among nonprofit

hospitals.⁷ These findings can be an important tool in advocacy efforts by establishing national and regional baselines. Stakeholders can highlight areas of interest in which some hospitals may lag behind their counterparts. **Table 2** shows the frequency of each of the themes, nationally, from 2010 to 2019. The “Affordability” theme, which includes bad debt and charity care, was the most frequent topic in every year of the last decade.

The supplemental filing text can also be queried for key terms. CBI researchers were able to support SOWEGA Rising’s advocacy goals by providing two query reports (Medicaid navigators and maternal health) and one consultation (gun violence) on key topics. The query reports document every use of a term within a cluster across every supplemental filing in the country from 2010 to 2021. These data allow community advocates to easily identify innovative hospitals and relevant programming. Both query reports can be found in **Appendix A**.

Finally, the CBI team has manually collected CHNA files from various hospital websites and performed a keyword frequency analysis on health equity and disparity topics. We also used generative artificial intelligence to identify whether these topics were discussed in Schedule H (Form 990) or CHNA files. We have developed an interactive application that allows users to explore the data and compare the results for individual hospitals or by theme.

Table 2. Percentage of Hospital Reporting Entities with One or More Uses of Key Term in Theme, by Tax Year

Theme and Key Terms	2010	2011	2012	2013	2014	2015	2016	2017	2018	2019	2019 Rank	Relative % Change	Percentage Point Change
Affordability: Affordable, affordability, bad debt, charity care, collection agency, prescription assistance, unaffordable.	97.5%	98.0%	98.3%	98.3%	98.4%	98.5%	99.0%	99.0%	99.3%	99.6%	1	2.1%	2.1
Government Organizations: County, health department(s), local government, school district.	83.8%	85.7%	90.2%	92.4%	94.4%	94.8%	95.6%	95.6%	96.3%	96.9%	2	15.7%	13.1
Mental Health: Anxiety, depression, dementia, mental health, rehabilitation, support group(s), suicide, therapy.	62.2%	66.2%	73.1%	79.4%	84.5%	87.1%	88.2%	88.6%	90.9%	93.2%	3	49.9%	31.0
Data Collection: Data collection, data collected, evaluation, focus group(s), listening tour, survey.	57.6%	59.2%	73.1%	81.3%	84.4%	87.6%	89.6%	89.7%	91.4%	92.3%	4	60.3%	34.7
Poverty: Poverty, poor, indigent, low income.	78.4%	82.7%	84.3%	85.8%	86.6%	88.6%	87.6%	87.1%	87.9%	89.9%	5	14.7%	11.5
Insurance: Discounted care, emergency Medicaid, presumptive eligibility, underinsured, uninsured, unreimbursed, without insurance.	75.7%	79.4%	83.7%	86.2%	88.0%	88.6%	88.5%	88.7%	89.0%	89.1%	6	17.7%	13.4
Activity: Committee, discussion, health fair(s), health screening(s), hearing screening(s), risk factor surveillance, vision screening(s).	67.5%	70.3%	74.3%	77.8%	82.0%	84.0%	84.0%	84.5%	86.3%	86.9%	7	28.8%	19.4
Chronic Illness: Asthma, cancer, cardiovascular disease, chronic condition, chronic illness, diabetes, heart disease, high blood pressure, hypertension.	58.3%	61.7%	65.8%	71.3%	78.7%	80.3%	80.1%	79.9%	81.4%	82.7%	8	41.8%	24.4
Child: Child, children, infant, kid.	56.4%	58.2%	63.5%	68.9%	75.1%	77.2%	78.6%	77.6%	79.6%	81.9%	9	45.4%	25.6
Senior: Aging, elderly, seniors, senior health.	63.0%	65.8%	68.6%	71.1%	75.1%	77.2%	78.8%	78.6%	79.7%	80.9%	10	28.4%	17.9
Nutrition: Disordered eating, eating disorder, food insecurity, healthy eating, healthy food, hunger, nutrition, obesity.	36.6%	39.3%	46.8%	53.3%	67.5%	72.6%	74.0%	74.4%	76.7%	77.0%	11	110.0%	40.3
Substance Use: Alcohol, cocaine, fentanyl, heroin, marijuana, opioid, overdose, substance abuse, substance use disorder.	17.3%	20.1%	29.6%	39.4%	47.2%	53.8%	57.5%	58.8%	67.7%	70.6%	12	308.0%	53.3
Oral Health: Dental insurance, dentist, oral health, tooth, teeth.	18.4%	20.3%	28.4%	35.3%	43.8%	50.5%	55.6%	57.1%	64.0%	66.7%	13	261.9%	48.3
Race and Ethnicity: African American, Asian, BIPOC, Black, Hispanic, Indigenous, Latino, Latinx, minority populations, Native Hawaiian, Pacific Islander, tribal.	36.5%	38.7%	44.1%	49.3%	51.9%	57.1%	58.4%	59.5%	62.5%	64.4%	14	76.4%	27.9
Exercise: Bike, exercise, fitness, walk.	31.5%	33.8%	37.7%	41.0%	52.2%	53.6%	54.8%	54.7%	55.9%	56.5%	15	79.4%	25.0
Rural: Rural.	43.0%	44.0%	46.7%	48.5%	50.7%	51.4%	51.6%	51.7%	53.2%	55.8%	16	29.9%	12.9
Equity: Disparity, disparities, equity, equities, inequity, inequities.	11.9%	12.9%	16.1%	19.2%	24.5%	30.2%	32.4%	35.6%	38.5%	42.5%	17	256.9%	30.6
Homelessness: Affordable housing, homeless, homelessness, houseless, transient.	14.5%	16.5%	19.0%	22.8%	25.0%	28.9%	32.4%	33.9%	36.0%	40.5%	18	179.0%	26.0
Tobacco: Secondhand smoke, smoke free, smoking cessation, tobacco.	16.8%	17.7%	23.4%	28.1%	36.7%	39.2%	39.8%	38.8%	40.0%	39.2%	19	132.9%	22.4
Criminal Justice: Criminal justice, jail, law enforcement, police, prison, reentry.	9.8%	12.7%	15.9%	20.1%	23.1%	25.8%	27.9%	28.7%	27.9%	32.5%	20	231.4%	22.7
SDOH: Social determinants of health (SDOH).	2.9%	3.5%	5.6%	7.1%	9.8%	14.5%	15.2%	17.3%	25.8%	30.9%	21	958.4%	28.0
Sexual Health: Birth control, HIV, infant mortality, maternal health, prenatal care, sexually transmitted infections, teen pregnancy.	13.7%	15.2%	18.9%	22.7%	26.3%	27.8%	26.8%	27.4%	28.2%	29.7%	22	116.4%	16.0
Health IT: Electronic health record (EHR), electronic medical record (EMR), telehealth.	6.1%	6.9%	8.9%	9.5%	11.5%	12.5%	14.4%	15.2%	18.6%	24.4%	23	300.0%	18.3
Disability: Arthritis, disability, hearing loss, mobility aid, traumatic brain injury, vision loss.	11.5%	12.7%	14.2%	16.7%	17.7%	18.8%	20.1%	20.6%	22.6%	21.8%	24	90.2%	10.4
Language: Limited English, translation, translator.	7.6%	8.5%	9.0%	9.1%	10.2%	13.3%	17.5%	18.2%	18.6%	20.3%	25	168.3%	12.7
Firearms: Gun(s), firearm(s), trigger lock, active shooter.	3.1%	3.6%	4.5%	6.0%	7.3%	6.8%	7.5%	7.6%	10.3%	10.6%	26	237.1%	7.4
Immigration: Alien, DACA, immigration, refugee, undocumented.	3.4%	4.0%	4.9%	5.7%	6.9%	9.2%	8.9%	8.0%	9.0%	9.2%	27	169.9%	5.8
LGBTQ: Bisexual, gay, lesbian, LGBTQ, nonbinary, queer, transgender.	0.5%	1.0%	1.5%	2.4%	2.6%	3.9%	4.3%	5.2%	7.6%	9.2%	27	1676.6%	8.6
Environment: Air quality, air pollution, climate change, climate resilience, extreme heat, fluoride, lead-based paint, pollutants, toxins, water pollution, water quality.	1.0%	1.3%	2.3%	3.8%	4.2%	3.9%	3.7%	4.3%	4.9%	6.1%	29	522.1%	5.2

Recommendations

Phoebe Putney

First and foremost, Phoebe Putney should reevaluate its existing medical debt practices and policies to understand their impact on the community. Medical debt can prevent people from receiving needed care in multiple ways. People with large medical debts may be turned away at the point of service; people without any debts may still be discouraged from seeking care if others in their community have struggled with overwhelming medical debts.

Phoebe Putney should also prioritize upstream investments in community health. Although many examples of other hospitals' efforts can be found in the query reports (**Appendix A**), the key to effective upstream investment is local stakeholder engagement. Community makeup, needs, and strengths are local factors that must be built into community health strategies. Including community members in the decision-making process is one of the most effective ways of ensuring that health initiatives are successful. Phoebe Putney should invest more community benefit spending in the preventative categories mentioned earlier to meet federal benchmarks. Phoebe Putney spent 11.35% of its functional expenses on community benefit in 2021. This falls short of the 2020 national average of 15.5%, the most recent national average available.⁸

As discussed in the Georgia section as follows, Medicaid expansion can benefit community health outcomes and hospital finances. Accordingly, hospitals can be powerful allies in advocacy efforts to expand Medicaid. Phoebe Putney should renew these efforts and join local stakeholders in pushing to close the coverage gap.

Georgia

Medicaid expansion should be a top priority for Georgia lawmakers. Medicaid shortfall spending depends not only on an individual hospital's choices, but also on the broader health care payment ecosystem. Additional government funding may allow hospitals to allocate more resources to the upstream investments mentioned throughout this report. The positive effects of Medicaid expansion extend beyond community benefit spending because it is consistently shown to correlate positively with health outcomes.

Federal

To maximize the effects of community benefit spending, the IRS should provide additional clarity on the spending categories. Hospital representatives often cite the difficulty in understanding what does and does not count as a reason for outsized spending in Medicaid shortfall. Clear guidelines would help steer hospitals toward the sort of spending envisioned when the Affordable Care Act was passed.

More critically, the IRS should implement a strong, transparent auditing process. A 2020 Government Accountability Office report found that, in 2016, at least 30 hospitals reported no spending, indicating potential noncompliance.⁹ In response, the IRS updated its reviewing guidelines to produce more documentation. It remains to be seen whether this updated process has been more effective in identifying noncompliant hospitals.

Endnotes

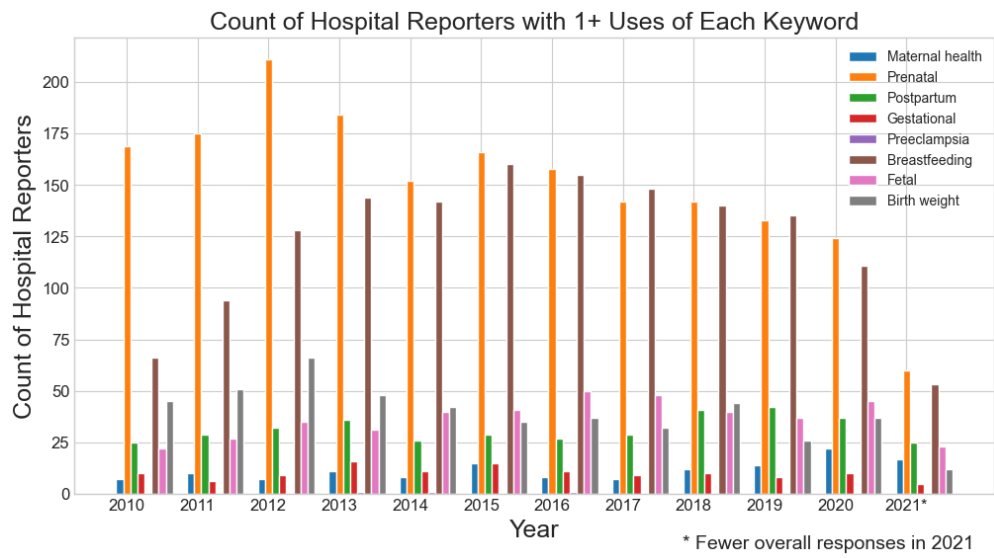
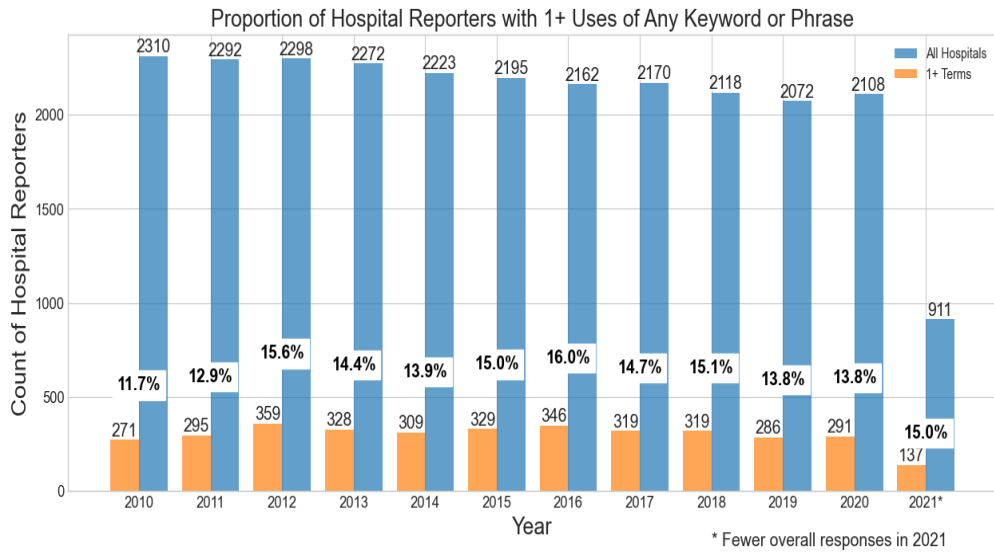
- ¹ Data elements are sourced from the Area Health Resources Files (AHRF) provided by the Health Resources & Services Administration (<https://data.hrsa.gov/data/download>). The AHRF pull data from several different sources into one county-level file that we use. Some of the elements we use are from the U.S. Census Bureau.
- ² Garber, J. (2023, February 13). *Hospitals pushing back on community benefit oversight*. Lown Institute. <https://lowninstitute.org/hospitals-pushing-back-on-community-benefit-oversight/>
- ³ U.S. Senate Sergeant at Arms. (2023, October 10). *NEWS: Chairman Sanders releases new report showing major nonprofit hospital systems exploiting tax breaks and prioritizing CEO pay over helping patients afford medical care* [Press release]. <https://www.sanders.senate.gov/press-releases/news-chairman-sanders-releases-new-report-showing-major-nonprofit-hospital-systems-exploiting-tax-breaks-and-prioritizing-ceo-pay-over-helping-patients-afford-medical-care/>
- ⁴ Chaiyachati, K. H., Qi, M., & Werner, R. M. (2020). Nonprofit hospital community benefit spending and readmission rates. *Population Health Management*, 23(1), 85–91. <https://doi.org/10.1089/pop.2019.0003>

- ⁵ Rakshit, S., Rae, M., Claxton, G., Amin, K., & Cox, C. (2024, February 12). *The burden of medical debt in the United States*. Peterson-KFF Health System Tracker. <https://www.healthsystemtracker.org/brief/the-burden-of-medical-debt-in-the-united-states/>
- ⁶ Kaiser Family Foundation. (2020, October 23). Health insurance coverage of nonelderly 0-64. <https://www.kff.org/other/state-indicator/nonelderly-0-64/>
- ⁷ Hadley, E., Marcial, L. H., Quattrone, W., & Bobashev, G. (2023). Text analysis of trends in health equity and disparities from the Internal Revenue Service tax documentation submitted by US nonprofit hospitals between 2010 and 2019: Exploratory study. *Journal of Medical Internet Research*, 25, e44330. <https://doi.org/10.2196/44330>
- ⁸ American Hospital Association. (2023, October). *Tax-exempt hospitals provided nearly \$130 billion in total benefits to their communities*. <https://www.aha.org/system/files/media/file/2023/10/Results-from-2020-Tax-Exempt-Hospitals-Schedule-H-Community-Benefit-Reports.pdf>
- ⁹ U.S. Government Accountability Office. Tax Administration: IRS Oversight of Hospitals' Tax-Exempt Status. GAO-23-106777. Washington, DC, 2023. Accessed May 31, 2024. <https://www.gao.gov/products/gao-23-106777>.

Appendix A: Maternal Health, Medicaid, and Rural Health Query Reports

CBI Query on 2023-12-20 by RTI International

Keywords: maternal health, prenatal, postpartum, gestational, preeclampsia, breastfeeding, fetal, birth weight



Keyword	Example Sentence	EIN	Hospital Name	Tax Year	F990 State
birth weight	maternal and newborn health indicators are also poor in brookdale's target area; several zip codes have low birth weight, premature birth, teen pregnancy, and infant mortality rates that are among the highest in brooklyn	111631746	Brookdale Hospital Medical Center	2016	NY
birth weight	low birth weight is a problem in onondaga county, according to the health department	150532254	St Josephs Hospital Health Center	2012	NY
birth weight	the incidence of infant mortality and low birth weight among african americans is double that of caucasians	150532254	St Josephs Hospital Health Center	2012	NY
birth weight	increasing numbers of pregnant women seeking care during 1st trimester:led by the mohawk valley perinatal network (mvpn), the maternal-child health workgroup addresses priority areas of low birth weight, preterm birth, and early entry to prenatal care, which are common problems in our community	161576637	Faxton-St Lukes Health care	2011	NY
birth weight	research shows this approach supports a decrease in low birth weight and preterm births and increases rates of exclusive breastfeeding	161576637	Faxton-St Lukes Health care	2011	NY
birth weight	particularly high risk women are those with previous pre-term or low birth weight infants, teens, those with co-morbidities such as high blood pressure, and chronic stress (domestic violence, homelessness, substance abuse, no or poor emotional or financial support)	161576637	Faxton-St Lukes Health care	2011	NY
birth weight	-statistics show that the prenatal center's percentage of low-birth weight outcomes is well within the healthy people 2010 guidelines	230469150	Chester County Hospital	2011	PA

birth weight	the effectiveness of this model and delivery of care has been measured by health outcomes for pregnancies, specifically increased birth weight and the gestational age of the mother at delivery	231352211	St Joseph Medical Center	2018	PA
birth weight	prenatal and perinatal health - low birth weight (5-year average)pike - 6	240798839	Wayne Memorial Hospital	2010	PA
birth weight	5the rate for low birth weight babies in pike and wayne counties, although significantly better than the state rate, are higher than the national rate and significantly worse than the 2010 healthy people 2010 target rate	240798839	Wayne Memorial Hospital	2010	PA
birth weight	for example, if bethesda did not address the root causes of low birth weight and prematurity, the burden to government medical programs such as medicaid would be even greater	310537122	Butler County Medical Center	2017	OH
birth weight	for example, if gsh did not address the root causes of low birth weight & prematurity, the burden to government medical programs such as medicaid would be even greater	310537486	Good Samaritan Hospital	2010	OH
birth weight	strategies include investigating the root causes of prematurity & low birth weight	310537486	Good Samaritan Hospital	2010	OH
birth weight	additionally, babies in clark county are more likely to be born below average birth weight and pre-term in comparison with the state averages	310785684	Springfield Regional Medical Center	2021	OH
birth weight	county based on factors ranging from low birth weight to diet and exercise to education and unemployment	340714538	Aultman Hospital	2011	OH
birth weight	the percent of low birth weight in ripley county is 6	350895832	Kings Daughters Hospital	2012	IN
birth weight	6% low birth weight, compared to 8	350895832	Kings Daughters Hospital	2012	IN
birth weight	the goal is to promote a healthy family environment, reduce the risk of low-birth weight babies and improve the success of breastfeeding for new mothers and their infants	480543768	Saint John Hospital	2010	KS

birth weight	specifically, the prevention first program promotes healthy outcomes that will decrease pre-term labor, infant mortality, unplanned c-section rate, nicu/picu length of stay and increase infant birth weight while promoting well-child care and immunizations	550526150	Camc Women And Childrens Hospital	2014	WV
birth weight	specifically, the prevention first program promotes healthy outcomes that will decrease pre-term labor, infant mortality, unplanned c-section rate, nicu/picu length of stay and increase infant birth weight while promoting well-child care and immunizations	550526150	Camc Women And Childrens Hospital	2015	WV
birth weight	approximately, 10 percent of all live births were considered low birth weight births	582200195	Piedmont Henry Hospital Inc	2020	GA
birth weight	*low birth weight infants - the rates for the area remain high, especially for hamilton county	620532345	Chi Memorial Hospital Hixson	2013	TN
birth weight	diabetes mortality rates for african americans are more than three times that of whites in hamilton county, and rates for low birth weight infants are twice that of whites	620532345	Chi Memorial Hospital Hixson	2013	TN
birth weight	mammography rates, the rising rate of low birth weight babies, overweight and obesity, tobacco use, mental health and drinking/drug use are also of great concern	820200895	St Alphonsus Regional Medical Center	2012	ID
birth weight	low birth weight (under 2,500 g), 2016: low birth weight is a negative birth indicator	841103606	Lutheran Medical Center	2020	CO
birth weight	babies born at a low birth weight are at higher risk for disease, disability and possibly death	841103606	Lutheran Medical Center	2020	CO
birth weight	the healthy people 2020 objective is to reduce low birth weight births to 7	841103606	Lutheran Medical Center	2020	CO
birth weight	all counties in the service area fell short of the healthy people 2020 objective for low birth weight (under 2,500 g)	841103606	Lutheran Medical Center	2020	CO

birth weight	9%) for low birth weight babies	841103606	Lutheran Medical Center	2020	CO
breastfeeding	also offered are breastfeeding classes, prenatal/postnatal classes, and infant/toddler safety classes	42790311	Baystate Medical Center	2017	MA
breastfeeding	baystate health offers many free parenting support groups including breastfeeding gatherings, new parents groups, toddler groups, parents of multiples groups, and a motherwoman support group	42790311	Baystate Medical Center	2017	MA
breastfeeding	john's medical staff and residents provide free blood pressure screenings, education on primary care and other health areas brochures were handed out on a variety of topics, including diabetes care, hypertension and heart health, obesity, pregnancy, chronic disease management breastfeeding and smoking prevention	111665825	St Johns Episcopal Hospital At South Shore	2018	NY
breastfeeding	white plains hospital's journey to become a "baby friendly" hospital translates perfectly with our goal to go beyond the hospital walls and increase breastfeeding exclusivity, understanding that breastfeeding choice is made prior to delivery	131740130	White Plains Hospital Center	2012	NY
breastfeeding	our goal is to promote healthy women, infants and children through increased breastfeeding statistics: breastfeeding, especially exclusive breastfeeding, is shown to reduce the risk of asthma, obesity, respiratory issues and other chronic conditions	131740130	White Plains Hospital Center	2012	NY
breastfeeding	for mothers, breastfeeding has been shown to reduce the risk of breast cancer, ovarian cancer, type 2 diabetes, heart disease and a multitude of other conditions	131740130	White Plains Hospital Center	2012	NY
breastfeeding	while our white plains hospital "community" does better percentagewise we are looking to increase our "in house" breastfeeding to over 65% by next year and over 75% the following year	131740130	White Plains Hospital Center	2012	NY

breastfeeding	in trying to achieve not only increases in our "in house" exclusive breastfeeding but by involving our partners and gaining buy-in from businesses we will markedly increase our goal for breastfeeding exclusivity for the first 6 months of life	131740130	White Plains Hospital Center	2012	NY
breastfeeding	we look at our outcome measures by the percentage of infants exclusively fed breast milk in hospital, and in year 2 we will look at our regions numbers for inclusively breastfeeding at 3 or 6 months	131740130	White Plains Hospital Center	2012	NY
breastfeeding	white plains hospital's maternal child health leadership group is committed to this project and will work to branch out to the community to increase our breastfeeding numbers incrementally over the next 3 years	131740130	White Plains Hospital Center	2012	NY
breastfeeding	we look forward to expanding our breast feeding support to not only new mothers, but any woman who comes to wph as a visitor, patient, volunteer or employee who is breastfeeding	131740130	White Plains Hospital Center	2012	NY
breastfeeding	- increase the general breastfeeding rate post-discharge to 81	150532180	Chenango Memorial Hospital	2018	NY
breastfeeding	tactics- provide clc support to new breastfeeding moms in the office setting	150532180	Chenango Memorial Hospital	2018	NY
breastfeeding	- sustainment of the breastfeeding coalition	150532180	Chenango Memorial Hospital	2018	NY
breastfeeding	- integrate breastfeeding promotion messages and information on supportive resources into other educational campaigns targeting pregnant women and mothers	150532180	Chenango Memorial Hospital	2018	NY
breastfeeding	- approach 5 new employers to assist with becoming breastfeeding friendly worksites	150532180	Chenango Memorial Hospital	2018	NY
breastfeeding	goals and performance measures - 2017- the hospital developed a process for measuring breastfeeding rates by pulling information from the hospital's emr	150532180	Chenango Memorial Hospital	2018	NY

breastfeeding	- visited 15 provider offices to promote breastfeeding best practices and provide magnetic referral guidance tool for clc support	150532180	Chenango Memorial Hospital	2018	NY
breastfeeding	- lhd provided 2 mailings, quarterly newsletters, world breastfeeding materials, and an email containing breastfeeding grand rounds information to non-cmh providers	150532180	Chenango Memorial Hospital	2018	NY
breastfeeding	- the lhd integrated breastfeeding promotion into educational activities that included pregnant women such as music in the park, world breastfeeding week, dairy days, and the chenango county fair	150532180	Chenango Memorial Hospital	2018	NY
breastfeeding	- the lhd included breastfeeding messaging in 2 provider mailings, social media, website and displays in businesses and departments in the county office building	150532180	Chenango Memorial Hospital	2018	NY
breastfeeding	- 37 moms received 1:1 breastfeeding support from a clc in cmh's sidney office through october	150532180	Chenango Memorial Hospital	2018	NY
breastfeeding	this was a joint effort of clc's from both chenango and delaware county breastfeeding coalitions	150532180	Chenango Memorial Hospital	2018	NY
breastfeeding	- cmh coordinated monthly staff meetings at their sidney office attended by key members of the pediatric staff, a hospital representative and chenango and delaware counties to review clc support, breastfeeding rates, challenges and obstacles	150532180	Chenango Memorial Hospital	2018	NY
breastfeeding	this tool included contact information for wic to be used for pregnant or post-partum low-income women to get services for breastfeeding support	150532180	Chenango Memorial Hospital	2018	NY
breastfeeding	- the lhd ran a billboard during 1q2017 promoting the acceptance of breastfeeding	150532180	Chenango Memorial Hospital	2018	NY
breastfeeding	- the lhd reached out to 5 employers about becoming breastfeeding friendly worksites	150532180	Chenango Memorial Hospital	2018	NY
breastfeeding	- the chenango county breastfeeding coalition, chaired by the lhd, met monthly at the hospital	150532180	Chenango Memorial Hospital	2018	NY

breastfeeding	the coalition currently has members from the hospital's women's health and maternity depts, wic, lhd, mothers & babies perinatal network, and from the broome county and delaware county breastfeeding coalitions	150532180	Chenango Memorial Hospital	2018	NY
breastfeeding	- through oct 2017, cmh made 7 referrals to the chenango doh and 11 to the delaware doh for breastfeeding assistance	150532180	Chenango Memorial Hospital	2018	NY
breastfeeding	of the remaining 235 infants discharged from cmh, 71% were breastfeeding at discharge against the healthy people 2020 goal of 81	150532180	Chenango Memorial Hospital	2018	NY
breastfeeding	9%; 58% were exclusively breastfeeding at discharge against a nys pa goal of 48	150532180	Chenango Memorial Hospital	2018	NY
breastfeeding	- the chenango doh received over 60 referrals and the delaware doh 20 referrals for breastfeeding support	150532180	Chenango Memorial Hospital	2018	NY
breastfeeding	- hospital senior management has been active in the lhd's breastfeeding coalition meetings since they began in 2016	150532180	Chenango Memorial Hospital	2018	NY
breastfeeding	- have set ground work for expansion of breastfeeding work within the ob setting for 2018	150532180	Chenango Memorial Hospital	2018	NY
breastfeeding	- chenango county breastfeeding coalition is strong	150532180	Chenango Memorial Hospital	2018	NY
breastfeeding	- the hospital now requires breastfeeding rates for 4 and 6 mo babies at its monthly quality meetings	150532180	Chenango Memorial Hospital	2018	NY
breastfeeding	- the pediatrician at cmh's sidney office is a strong supporter of improving breastfeeding rates for his patients	150532180	Chenango Memorial Hospital	2018	NY
breastfeeding	- we have learned that the breastfeeding rates for moms that respond to follow-up calls come close to the nys pa and healthy people 2020 goals	150532180	Chenango Memorial Hospital	2018	NY
breastfeeding	strengths - 2018- moms that receive breastfeeding education are more likely to continue post-discharge	150532180	Chenango Memorial Hospital	2018	NY

breastfeeding	they are excellent resources on the hospital's maternity unit and are available to help moms with breastfeeding before discharge	150532180	Chenango Memorial Hospital	2018	NY
breastfeeding	- breastfeeding assistance is available 24/7 by phone or in person by contacting the maternity unit post discharge	150532180	Chenango Memorial Hospital	2018	NY
breastfeeding	- the hospital's emr is difficult to use to collect breastfeeding data	150532180	Chenango Memorial Hospital	2018	NY
breastfeeding	there doesn't seem to be a good way to measure breastfeeding rates due to the number of no-shows in the office and no responses to phone calls or messages	150532180	Chenango Memorial Hospital	2018	NY
breastfeeding	- state breastfeeding stats for this hospital are based on babies born here	150532180	Chenango Memorial Hospital	2018	NY
breastfeeding	this negates our ability to support breastfeeding for those babies prior to discharge	150532180	Chenango Memorial Hospital	2018	NY
breastfeeding	- we are trying to change a culture about breastfeeding	150532180	Chenango Memorial Hospital	2018	NY
breastfeeding	many new moms have their own mothers and grandmothers telling them they didn't breastfeed so why should she?- it has been very difficult getting consistent attendance from cmh's clinical staff at the breastfeeding coalition meetings due to thin staffing, vacancies and other priorities	150532180	Chenango Memorial Hospital	2018	NY
breastfeeding	challenges - 2018- the hospital's emr system is not programmed to easily retrieve or report breastfeeding data	150532180	Chenango Memorial Hospital	2018	NY
breastfeeding	additionally, the process for inputting breastfeeding information varies by nurse and by clinic	150532180	Chenango Memorial Hospital	2018	NY
breastfeeding	- there is inconsistent breastfeeding education in the hospital setting when the mom is educated prenatally at cmh but delivers elsewhere due to high risk, baby is transferred, etc	150532180	Chenango Memorial Hospital	2018	NY
breastfeeding	- there are differing interpretations of what "exclusive breastfeeding" means among providers	150532180	Chenango Memorial Hospital	2018	NY

breastfeeding	- there isn't a good way to measure post-partum breastfeeding rates due to the number of no-shows in the office and unanswered phone calls or messages	150532180	Chenango Memorial Hospital	2018	NY
breastfeeding	- in 2018 the lhd will meet to establish/revise measures and possibly new means of measuring breastfeeding rates county wide	150532180	Chenango Memorial Hospital	2018	NY
breastfeeding	- provide structured breastfeeding education and professional lactation counseling during pregnancy, in the hospital and at home	150532180	Chenango Memorial Hospital	2018	NY
breastfeeding	- continue to link pregnant or post-partum low-income women to local wic services for breastfeeding support	150532180	Chenango Memorial Hospital	2018	NY
breastfeeding	- the lhd will integrate breastfeeding promotion messages and information on supportive resources into other educational campaigns targeting pregnant women and mothers	150532180	Chenango Memorial Hospital	2018	NY
breastfeeding	- promote breastfeeding best practices in the ob settings, particularly in the hospital's women's health center	150532180	Chenango Memorial Hospital	2018	NY
breastfeeding	- the lhd will continue to provide structured, comprehensive breastfeeding education and professional lactation counseling, including the use of internal board certified lactation consultants (ibclcs) during pregnancy, in the hospital and home	150532180	Chenango Memorial Hospital	2018	NY
breastfeeding	,- the lhd will approach 5 new employers to assist with becoming breastfeeding friendly worksites	150532180	Chenango Memorial Hospital	2018	NY
breastfeeding	- the chenango county breastfeeding coalition will continue with cmh participation and support	150532180	Chenango Memorial Hospital	2018	NY
breastfeeding	these sessions include structured breastfeeding education and professional lactation counseling by the hospital's ibclc	150532180	Chenango Memorial Hospital	2018	NY
breastfeeding	- the hospital's ibclc teaches breastfeeding during the childbirth education classes	150532180	Chenango Memorial Hospital	2018	NY

breastfeeding	the group meets every other month to review quality indicators, patient satisfaction scores, stats including c-sections, breastfeeding rates, educational materials available for mothers, policy evaluations, regulation changes, and special projects such as the nysdoh obstetric hemorrhage project	150532180	Chenango Memorial Hospital	2018	NY
breastfeeding	way, cardiology in the first month, beyond the sacred hour: supporting exclusive breastfeeding in the early postpartum period	150532180	Chenango Memorial Hospital	2018	NY
breastfeeding	- clc - the center for breastfeeding's lactation counselor training course is 5 days of classroom training and 30 hours of hands-on training designed to provide a solid, up-to-date, research based body of information regarding lactation as well as the art of counseling	150532180	Chenango Memorial Hospital	2018	NY
breastfeeding	- breastfeeding week - cmh had an information booth set up during a public concert event in conjunction with the chenango county blues fest to promote breastfeeding	150532180	Chenango Memorial Hospital	2018	NY
breastfeeding	chapters include information about breastfeeding, smoking during pregnancy, etc	150532180	Chenango Memorial Hospital	2018	NY
breastfeeding	education sessions include pregnancy, birth, breastfeeding, and baby safety	150532180	Chenango Memorial Hospital	2018	NY
breastfeeding	information about child birth classes, breastfeeding, and the maternity unit was distributed	150532180	Chenango Memorial Hospital	2018	NY
breastfeeding	the hospital's birthplace provides childbirth classes, breastfeeding classes, early pregnancy classes and infant cpr classes	161012691	Canton-Potsdam Hospital	2020	NY
breastfeeding	ohc promotes breastfeeding with all mothers offering certified lactation consultants to assist in breastfeeding success	161492011	Oneida Healthcare Center	2018	NY
breastfeeding	the center provides information to expectant parents on childbirth, breastfeeding and new infant care giving	260479484	St Vincents Medical Center Southside	2020	FL

breastfeeding	such events range from cancer survivor classes and support groups, breastfeeding classes, sibling classes, a safe babysitter program and parenting education	320265031	Maine general Medical Center	2015	ME
breastfeeding	baby-friendly hospitals are hospitals that are recognized for encouraging breastfeeding and mother/baby bonding, which is known to provide health benefits for infants, children, and mothers	351142669	St Josephs Reg Med Center Plymouth	2016	IN
breastfeeding	pleasant provided breastfeeding education and support education to 75 people, reporting a total of 114 breastfeeding education and support contacts	381437919	Midmichigan Medical Center-Gratiot	2020	MI
breastfeeding	,missouri valley * harrison county home & public health-provided funding to harrison county home & public health (hchph) to host a milk mob training (evidence based program) to train community health workers in breastfeeding support	470376601	Chi Health St Francis	2015	NE
breastfeeding	* breastfeeding-provided funding and planning support to host a 5 day training in york, ne for clinic and community healthcare workers to obtain their certified lactation counselor (clc) designation	470376601	Chi Health St Francis	2015	NE
breastfeeding	*southwest iowa breastfeeding coalition-provided funding that supports the purchase and distribution of over 40 breast pumps through wic, for mothers on medicaid - iowa medicaid does not reimburse for breast pumps	470376615	Chi Health Immanuel	2018	NE
breastfeeding	*nebraska breastfeeding coalition-provided funds that supports the building of coalition infrastructure to include evaluation of existing work and development of long-term strategic plan to secure sustainable funding	470376615	Chi Health Immanuel	2018	NE
breastfeeding	future focus is moving toward strategies that connect breastfeeding and breastfeeding support with mental health	470376615	Chi Health Immanuel	2018	NE

breastfeeding	" childbirth preparation courses-to provide the community's newest residents with the best starts possible in life, saint john offers a wide range of childbirth preparation courses, including breastfeeding, prepared childbirth, and sibling preparation	480543768	Saint John Hospital	2010	KS
breastfeeding	the goal is to promote a healthy family environment, reduce the risk of low-birth weight babies and improve the success of breastfeeding for new mothers and their infants	480543768	Saint John Hospital	2010	KS
breastfeeding	the hospital also assists with parenting education as the education department offers classes like daddy basics, breastfeeding basics, safe sitters and first aid for children	481186704	Mercy Regional Health Center	2019	KS
breastfeeding	the knapp women's health department coordinates an annual breastfeeding conference for local wic educators and other case managers at knapp's conference center and of course, knapp offers breast feeding education through the family birthing classes	741393060	Knapp Medical Center	2017	TX
breastfeeding	rumc's commitment to the needs of the poor pregnant, postpartum, breastfeeding women, infants and children can be demonstrated on many levels	743177454	Richmond University Medical Center	2014	NY
breastfeeding	physicians are educated on breastfeeding, staff is trained as certified lactation consultants, and a multidisciplinary team meets monthly to ensure that breastfeeding protocols and procedures are followed	743177454	Richmond University Medical Center	2014	NY
breastfeeding	program participants demonstrate improved knowledge of pregnancy, higher birth weight, especially for infants delivered preterm, high breastfeeding rates and fewer er visits	743177454	Richmond University Medical Center	2014	NY
breastfeeding	the class consists of signs of labor, danger signs of pregnancy, what to expect during labor, pain control/relief in labor, immediate post partum care and breastfeeding	911286274	Sunnyside Community Hospital	2013	WA
fetal	mid-atlantic maternal fetal institute, inc	231352152	Abington Memorial Hospital	2017	PA

fetal	----- mid-atlantic maternal fetal institute, inc	231352152	Abington Memorial Hospital	2017	PA
fetal	mid-atlantic maternal fetal institute, pc ----- mid-atlantic maternal fetal institute, pc is a for-profit entity	231352152	Abington Memorial Hospital	2017	PA
fetal	the clinics subsidy includes the operations of the medical and surgical clinics, children's clinic, the dental clinic, the center for women's medicine, the family health center, geriatrics, maternal fetal medicine, and the mental health clinic	231689692	Lehigh Valley Hospital	2014	PA
fetal	mid-atlantic maternal fetal institute, inc	263359979	Lansdale Hospital	2017	PA
fetal	----- mid-atlantic maternal fetal institute, inc	263359979	Lansdale Hospital	2017	PA
fetal	mid-atlantic maternal fetal institute, pc ----- mid-atlantic maternal fetal institute, pc is a for-profit entity	263359979	Lansdale Hospital	2017	PA
fetal	our maternal fetal treatment center provides genetic counseling and obstetric/delivery services to high-risk pregnant women in the region	340714357	Akron Childrens Hospital	2021	OH
fetal	in addition, promedica strategic planning continues to develop patient-centered, integrated clinical service lines including cancer, cardiovascular, behavioral health, social determinants of health, and maternal fetal medicine	341883132	Bay Park Community Hospital	2017	OH
fetal	in addition, promedica strategic planning continues to develop patient-centered, integrated clinical service lines including cancer, cardiovascular, behavioral health, social determinants of health, and maternal fetal medicine	344428256	The Toledo Hospital	2019	OH

fetal	the affiliate-based fellowship program areas include: cardiology, cardiothoracic surgery, child neurology, child psychiatry, colon rectal surgery, electrophysiology, gynecology-oncology, hematology-oncology, mammography, maternal-fetal medicine, medical microbiology, molecular genetics pathology, neonatal-perinatal medicine, nephrology, neuroradiology, orthopaedic hand, orthopaedic sports, palliative medicine, peripheral vascular surgery, and surgical oncology	362167060	Skokie Hospital	2016	IL
fetal	in addition, promedica strategic planning continues to develop patient-centered, integrated clinical service lines including cancer, cardiovascular, behavioral health, social determinants of health, and maternal fetal medicine	383049015	Herrick Medical Center	2019	MI
fetal	programs for both physicians and nurses include topic presentations, case reviews, fetal monitoring classes, neonatal resuscitation program training, and the stable program, a course in the stabilization of sick or preterm newborns	430738490	Ssm Cardinal Glennon Childrens Hospit	2012	MO
fetal	louis fetal care institutethe st	430738490	Ssm Cardinal Glennon Childrens Hospit	2012	MO
fetal	louis fetal care institute serves families across the country by offering the most comprehensive fetal care program in middle america	430738490	Ssm Cardinal Glennon Childrens Hospit	2012	MO
fetal	although many fetal conditions require only careful monitoring and preparation for the baby's birth, many conditions that threaten a baby's quality of life can be surgically corrected while the baby is still in the womb	430738490	Ssm Cardinal Glennon Childrens Hospit	2012	MO
fetal	louis fetal care institute has become one of the only centers in the country to provide this type of life-changing surgery and has helped a number of children whose lives would have otherwise been significantly different	430738490	Ssm Cardinal Glennon Childrens Hospit	2012	MO

fetal	mary's health center is a contemporary, 525-bed hospital with distinct capabilities in high-risk obstetrical services, fetal surgery, state-of-the-art heart surgery, a chest pain center, advanced stroke care and the latest imaging and outpatient services	431343281	Ssm Health St Joseph Hospital - Sc	2014	MO
fetal	interactive network provides electrocardiogram management, interactive cardiac management, remote cardiac monitoring, electroencephalogram monitoring, fetal monitoring, biomedical services, dialysis and infant pneumocardiograms to patients in western and central north dakota	450226711	St Alexius Medical Center	2012	ND
fetal	, stormont vail provides internal fetal medicine services to the community	480543789	Stormont-Vail Regional Health Center	2016	KS
fetal	, childhood obesity program, fetal infant mortality, prostate cancer) or through the phcc which is led and primarily financed by civista health (crmc)	520445374	Civista Medical Center	2013	MD
fetal	, childhood obesity program, fetal infant mortality, prostate cancer) or through the phcc which is led and primarily financed by civista health (um crmc)	520445374	Civista Medical Center	2013	MD
fetal	, childhood obesity program, fetal infant mortality)	520445374	Civista Medical Center	2013	MD
fetal	services offered at the hospital include cardiac care, imaging services, a women's care center, including a maternal fetal center, surgical services and interventional radiology	651219504	Adventist Bolingbrook Hospital	2011	IL
fetal	fellowship programs for sports medicine and maternal fetal medicine	820912090	Memorial Hospital	2020	PA
fetal	the goal of the program is to improve pregnancy outcomes for women and to reduce fetal deaths and neonatal and maternal complications	951643347	Redlands Community Hospital	2013	CA

gestational	dsme is offered in group or individual sessions that include general dsme, insulin initiation/adjustment, self blood glucose management, gestational diabetes counseling, and insulin pump therapy	10211534	Mercy Hospital	2010	ME
gestational	the target audience is newly diagnosed or previously diagnosed adults with diabetes, which includes type 1, type 2, and gestational diabetes and their significant others	10211534	Mercy Hospital	2010	ME
gestational	- supporting and promoting the national diabetes prevention program (ndpp) for overweight and obese adults with pre-diabetes or women with history of gestational diabetes	111631781	Flushing Hospital Medical Center	2017	NY
gestational	- supporting and promoting the national diabetes prevention program (ndpp) for overweight and obese adults with pre-diabetes or women with history of gestational diabetes	111631781	Flushing Hospital Medical Center	2018	NY
gestational	- supporting and promoting the national diabetes prevention program (ndpp) for overweight and obese adults with pre-diabetes or women with history of gestational diabetes	111631788	Jamaica Hospital Medical Center	2016	NY
gestational	- supporting and promoting the national diabetes prevention program (ndpp) for overweight and obese adults with pre-diabetes or women with history of gestational diabetes	111631788	Jamaica Hospital Medical Center	2021	NY
gestational	increased educational focus throughout the year was on: the identification and treatment of diabetic ketoacidosis and gestational diabetes, and using a1c as the definitive test for diagnosis	150532221	Our Lady Of Lourdes Memorial Hosp	2014	NY
gestational	in this innovative care model, groups of eight to 12 women in similar gestational stages meet together with their healthcare provider to learn care skills, participate in a facilitated discussion and develop a support network with fellow members	160743134	Rochester General Hospital	2016	NY

gestational	eight to twelve women with similar gestational ages meet together, learn care skills, participate in a facilitated discussion and develop a support network with other group members	231352211	St Joseph Medical Center	2013	PA
gestational	the effectiveness of this model and delivery of care has been measured by health outcomes for pregnancies, specifically increased birth weight and the gestational age of the mother at delivery	231352211	St Joseph Medical Center	2013	PA
gestational	moms with meters are classes offered for pregnant women with diabetes or gestational diabetes	231396794	Albert Einstein Medical Center	2010	PA
gestational	moms with meters are classes offered for pregnant women with diabetes or gestational diabetes	231396794	Albert Einstein Medical Center	2011	PA
gestational	forty women were referred to the free community-based gestational diabetes program (bebes dulces sin azucar: sweet babies without sugar); there were no babies born over ten pounds, overall birth outcomes were positive, and mothers returned to normal glucose readings six-weeks post-partum	350868132	Memorial Hospital Of South Bend	2010	IN
gestational	1 joslin diabetes center hospital-certified diabetes educators provide patients with group and individual education related to diabetes and nutrition; medication management including insulin starts; continuous glucose monitoring system; insulin pump therapy; and gestational diabetes education series	383160564	St John River District Hospital	2013	MI
gestational	- gestational diabetes counseling is offered to anyone experiencing problems with their pregnancy	462288155	Mercy Hospital Ada	2015	OK
gestational	the morton plant mease diabetes education center provides free outpatient services to those diagnosed with diabetes, gestational diabetes or at risk of developing diabetes	590855412	Mease Hospital And Clinic	2021	FL

gestational	the birth day place offers all-natural, midwife-assisted births, programs for first-time parents and for mothers with gestational diabetes or other high-risk pregnancies, and the most current treatment methods for medical complications associated with pregnancy	590872594	South Miami Hospital	2010	FL
gestational	south miami hospital offers all-natural, midwife-assisted births, programs for first-time parents and for mothers with gestational diabetes or other high-risk pregnancies, and the most current treatment methods for medical complications associated with pregnancy	590872594	South Miami Hospital	2012	FL
gestational	south miami hospital offers all-natural, midwife-assisted births, programs for first-time parents and for mothers with gestational diabetes or other high-risk pregnancies, and the most current treatment methods for medical complications associated with pregnancy	590872594	South Miami Hospital	2019	FL
gestational	they provide structured diabetes education classes in both english and spanish, including a gestational diabetes program for expectant mothers, as well as support groups and individualized and group instruction	770634227	Vhs Browns ville Hospital Company, Llc	2012	TX
gestational	summit healthcare offers numerous support groups and educational classes: chemo support group, caregiver support group, diabetes support group, victory education, total joint replacement, heart failure education cardiac and pulmonary discussion group and stroke educationseminar, childbirth class and a gestational diabetes class	860320447	Summit Heal thcare Regio nal Medical Center	2014	AZ
gestational	in addition, a dietitian assisted community members with education and support for diabetes management, wound healing, obesity and weight loss, and gestational diabetes	951643336	Methodist Hospital Of Southern Ca	2018	CA

gestational	in addition, a dietitian assisted community members with education and support for diabetes management, wound healing, obesity and weight loss, bariatric nutrition class and support group, and gestational diabetes	951643336	Methodist Hospital Of Southern Ca	2019	CA
maternal health	these areas include obesity, healthy eating and physical activity, chronic diseases, reproductive and maternal health, and communicable disease	43229679	Beth Israel Deaconess Hospital-Needham	2013	MA
maternal health	child and maternal health 3	223319886	Saint Clares Hospital	2015	NJ
maternal health	-projects and programs that strengthen maternal health care	240795623	Pocono Medical Center	2011	PA
maternal health	-projects and programs that strengthen maternal health care	240795623	Pocono Medical Center	2012	PA
maternal health	- projects and programs that strengthen maternal health care	240795623	Pocono Medical Center	2017	PA
maternal health	,maternal health: the organization has many successful programs related to prenatal,maternal health: the organization has many successful programs related to prenatal,and maternal health which will continue to be offered to the community	251801532	Heritage Valley Beaver	2012	PA
maternal health	,and maternal health which will continue to be offered to the community	251801532	Heritage Valley Beaver	2012	PA
maternal health	the community health division plans and provides technical assistance for system-level strategies that address these common health needs including health inequities, tobacco, behavioral health access, infant and maternal health and social needs	351955872	Indiana University Health Methodist Hospital	2021	IN
maternal health	- staff service on health related board and coalitions - participation in and funding of maternal health, substance abuse, food access, violence prevention, cancer and other community health coalitions	392031968	Chi Health Nebraska Heart	2018	NE

maternal health	*staff service on health related board and coalitions*participation in and funding of maternal health, substance abuse, food access, violence prevention, cancer and other community health coalitions	420782518	Chi Health Mercy Corni ng	2019	IA
maternal health	-participation in and funding of maternal health, breastfeeding, substance abuse, cancer, diabetes and other community health coalitions -mental health coalitions including national alliance on mental illness, nebraska, nebraska association of behavioral health care organizations, and the juvenile justice provider forum behavioral health committee	470376615	Chi Health Immanuel	2011	NE
maternal health	-participation in and funding of maternal health, breastfeeding, substance abuse, cancer, diabetes and other community health coalitions -mental health coalitions including national alliance on mental illness nebraska, nebraska association of behavioral health care organizations and the juvenile justice provider forum behavioral health committee	470376615	Chi Health Immanuel	2011	NE
maternal health	*staff service on health related board and coalitions*participation in and funding of maternal health, substance abuse, food access, violence prevention, cancer and other community health coalitions	470376615	Chi Health Immanuel	2019	NE
maternal health	* participation in and funding of maternal health, breastfeeding, substance abuse, cancer, diabetes and other community health coalitions * mental health coalitions including national alliance on mental illness, nebraska association of behavioral health care organizations, and the juvenile justice provider forum behavioral health committee	470399853	Chi Health Schuyler	2013	NE
maternal health	- staff service on health related board and coalitions- participation in and funding of maternal health, substance abuse, food access, violence prevention, cancer and other community health coalitions	470443636	Saint Marys Hospital	2020	NE

maternal health	child and maternal health 7	480543721	St Catherine Hospital	2011	KS
maternal health	this data describes more than 45 health measures on access, infant/maternal health, mental and behavioral health, smoking, healthy behaviors, outcomes, and dental	510216586	Providence Alaska Medical Center	2018	WA
maternal health	-engaged in partnership with spaces in action and children's law center to improve coverage of workforce specialties, such as doulas and community health workers, to improve maternal health outcomes	530196580	Childrens Hospital	2020	DC
maternal health	these activities include direct medical services for impoverished teens, child safety programs, community health lectures and seminars, ongoing research in the areas of child and maternal health, etc	770003859	Lucile Packard Childrens Hospital	2016	CA
maternal health	these activities include direct medical services for impoverished teens, child safety programs, community health lectures and seminars, ongoing research in the areas of child and maternal health, etc	770003859	Lucile Packard Childrens Hospital	2019	CA
maternal health	these activities include direct medical services for impoverished teens, child safety programs, community health lectures and seminars, ongoing research in the areas of child and maternal health, etc	770003859	Lucile Packard Childrens Hospital	2020	CA
maternal health	these activities include clinical trials information and enrollment services, health insurance enrollment services for low-income adults and children, community health educations programs, supportive care programs for cancer and neuroscience patients, and ongoing research in the areas of child and maternal health	946174066	Stanford Health Care	2016	CA
postpartum	the home will provide expanded support to pregnant, postpartum and parenting women, ages 18 or older (who may also have a child/children 36 months or younger) with oud and/or a history of opioid overdose	42103575	Baystate Franklin Medical Center	2018	MA

postpartum	birth sisters are women who are trained to provide social support and education to mothers from their own communities during pregnancy, labor, and the postpartum period	43314093	Boston Medical Center	2016	MA
postpartum	the wic program staff reaches out into the community to provide nutritional counseling, breastfeeding education and food for pregnant and postpartum women and infants and children who are at nutritional risk	60646652	Yale-New Haven Hospital	2012	CT
postpartum	all pregnant and postpartum women are offered the vaccine as a standing order and in november 2014, 85% of our postpartum patients received the vaccine	111631781	Flushing Hospital Medical Center	2019	NY
postpartum	2) follow several cohorts of 8-12 expectant parents and engage them in 3 pre-natal group visits (both in-person and virtually), and between 3-4 postpartum visits individually (both in-person and virtually), over the course of 3 months	111631796	New York-Presbyterian/Brooklyn Metho	2019	NY
postpartum	3) provide educational support by persons trained in infant feeding, infant care, birthing, and postpartum mental health screening	111631796	New York-Presbyterian/Brooklyn Metho	2019	NY
postpartum	2) follow several cohorts of 8-12 expectant parents and engage them in 3 pre-natal group visits (both in-person and virtually), and between 3-4 postpartum visits individually (both in-person and virtually), over the course of 3 months	111631796	New York-Presbyterian/Brooklyn Metho	2020	NY
postpartum	3) provide educational support by persons trained in infant feeding, infant care, birthing, and postpartum mental health screening	111631796	New York-Presbyterian/Brooklyn Metho	2020	NY
postpartum	, and opened a new practice in the fall of 2009, which has expanded access to quality prenatal and postpartum care	150532079	Cortland Regional Medical Center, Inc	2010	NY
postpartum	-postpartum and newborn care education - maternity staff provide education to new mothers about how to care for themselves and their newborns	150532079	Cortland Regional Medical Center, Inc	2010	NY

postpartum	through this relationship, chmca and the hub provide bidirectional referrals of women who are pregnant and up to one year postpartum, increasing their access to research such as prenatal care; food and housing assistance, adult education, tobacco cessation services, and others	340714357	Akron Childrens Hospital	2018	OH
postpartum	instructors educated on labor, medical interventions, cesarean sections, comfort techniques, and postpartum (physical as well as emotional)	381359218	Bronson Lakeview Hospital	2021	MI
postpartum	information is available on coping skills, physiology of labor and birth, emotional aspects, healthy lifestyle, childbirth options and early postpartum period	410758434	Lakewood Health Center	2019	MN
postpartum	an example of community collaboration is the finley suite beginnings program, which provides pre-natal education and postpartum home visits to all newborns	420680354	The Finley Hospital	2011	IA
postpartum	an example of community collaboration is the finley suite beginnings program, which provides pre-natal education and postpartum home visits to all newborns	420680354	The Finley Hospital	2015	IA
postpartum	a postpartum depression screening of birth mothers is performed at two weeks, two months, and four months during primary care well visits	470379754	Childrens Hospital & Medical Center	2020	NE
postpartum	the bhsf system offers a full spectrum of maternity care options, including labor-delivery-recovery and labor-delivery-recovery-postpartum rooms, and is equipped to handle high-risk mothers and births, including babies who are premature or ill	591987355	Mariners Hospital	2011	FL
postpartum	the bhsf system offers a full spectrum of maternity care options, including labor-delivery-recovery and labor-delivery-recovery-postpartum rooms, and is equipped to handle high-risk mothers and births, including babies who are premature or ill	650232993	Homestead Hospital	2011	FL

postpartum	this expansion added a new wing that houses 40 private patient rooms, as well as a completely renovated labor/delivery/postpartum and delivery rooms (ldrp) which allow for a single room to accommodate all the new mother's needs	710403278	Johnson Regional Medical Center	2015	AR
postpartum	this expansion added a new wing that houses 40 private patient rooms, as well as a completely renovated labor/delivery/postpartum and delivery rooms (ldrp) which allow for a single room to accommodate all the new mother's needs	710403278	Johnson Regional Medical Center	2020	AR
postpartum	this federal program provides supplemental nutritional support for women, infants and children (wic) for low-income pregnant, breastfeeding, and non-breastfeeding postpartum women and to infants and children up to the age of five who are at nutritional risk	840166760	Childrens Hospital Colorado	2018	CO
postpartum	project search participants are able to learn and work alongside staff in several clinical and non-clinical areas across cmc facilities, these include: nicu, antepartum, postpartum, environmental services, materials management, kitchen and plant operations	941156276	Community Regional Medical Center	2018	CA
postpartum	at the state level, valley children's senior vice president and chief community impact officer chaired california's mental health services oversight & accountability commission and a number of valley children's team members successfully helped advocate for continued medi-cal coverage for postpartum depression	941294954	Childrens Hospital Central California	2020	CA
preeclampsia	pregnant teens are at higher risk of having pregnancy-induced hypertension, preeclampsia, and babies with low birth-weight	582200195	Piedmont Henry Hospital Inc	2013	GA
preeclampsia	pregnant teens are at higher risk of having pregnancy-induced hypertension, preeclampsia, and babies with low birth-weight	582200195	Piedmont Henry Hospital Inc	2014	GA

preeclampsia	pregnant teens have a higher risk of having pregnancy-induced hypertension, preeclampsia, and babies with low birth-weight	582200195	Piedmont Henry Hospital Inc	2016	GA
prenatal	mdih hosted prenatal yoga classes instructed by one of our ob nurses	10211797	Mount Desert Island Hospital	2019	ME
prenatal	-health education which involves emerson staff presenting free lectures to the community on various health care issues such as breast cancer, cardiac health, sports medicine, prenatal care and others	42103565	Emerson Hospital	2012	MA
prenatal	centering pregnancy is an innovative and proven model of care that offers prenatal care in 10 two-hour group sessions using a curriculum modified to meet the complex social needs of bmcs population	43314093	Boston Medical Center	2015	MA
prenatal	at these sessions, beginning early in the second trimester, patients receive health visits, prenatal and parenting education, and peer group support all in one visit	43314093	Boston Medical Center	2015	MA
prenatal	project respect: project respect (recovery, empowerment, social services, prenatal care, education, community and treatment), is a high risk obstetrical and addiction recovery medical home at boston medical center and boston university school of medicine	43314093	Boston Medical Center	2015	MA
prenatal	have a healthy baby: the hospital is designated as a prenatal care assistance program (pcap) provider	111631781	Flushing Hospital Medical Center	2010	NY
prenatal	in addition, the hac staff refers patients to the medicaid prenatal care program and to the senior navigator program within northwell for assistance with medicaid for pregnant women and medicare enrollment for seniors	131740118	Northern Westchester Hospital	2017	NY

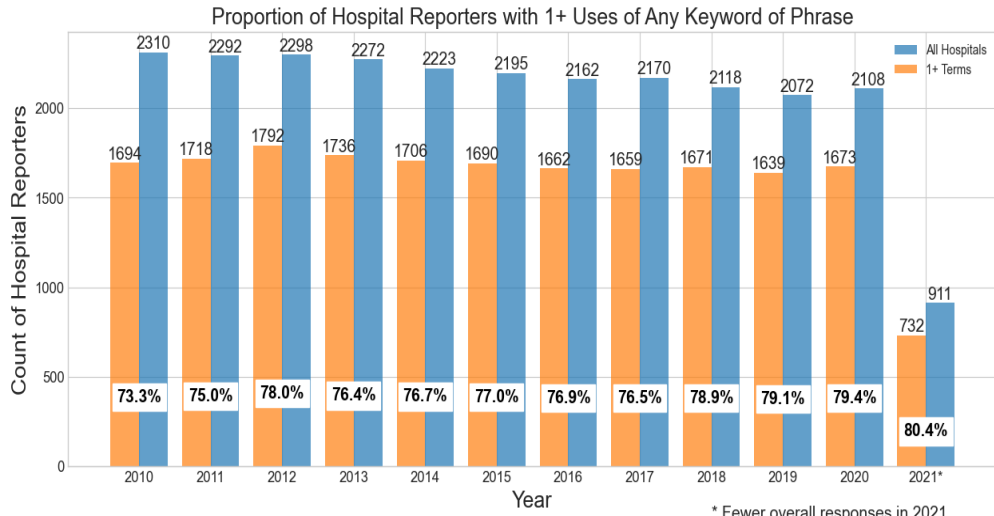
prenatal	the nysdoh prevention agenda shapes these collaborations, whose goals are prevention of chronic disease, promotion of physical activity and nutrition; access to quality health care, limited tobacco use and exposure to tobacco; and achieving the health and well-being of prenatal mothers and their children	150532180	Chenango Memorial Hospital	2011	NY
prenatal	ohc provides meeting space for numerous support groups for individuals facing emotional and physical health challenges such as cancer, scleroderma, obesity, prenatal care, and aphasia	161492011	Oneida Healthcare Center	2015	NY
prenatal	the system works closely with the southern new jersey prenatal cooperative to identify and improve maternal, infant, and pediatric health care in the region	221773439	Kennedy University Hospital	2015	NJ
prenatal	comenzando bien: a free spanish prenatal class comenzando bien (good beginning) was created by the national march of dimes as a way to help educate hispanic women about prenatal care at st	231352211	St Joseph Medical Center	2011	PA
prenatal	the prenatal education portion of the classes encourages positive behaviors, including taking vitamins, getting needed vaccinations and eating properly during pregnancy	231352211	St Joseph Medical Center	2011	PA
prenatal	instead of short visits alone with a provider, centering pregnancy group participants receive approximately 20 hours of prenatal care across pregnancy, compared to about 2 total hours all at no additional cost	231352211	St Joseph Medical Center	2018	PA
prenatal	centering pregnancy is prenatal care that serves the general needs of all pregnant women and meets the special needs of racial and ethnic groups	231352211	St Joseph Medical Center	2018	PA
prenatal	this prenatal care model transcends barriers to bring women together to share what they have in common: the desire to have a healthy baby and a safe, satisfying labor and delivery experience	231352211	St Joseph Medical Center	2018	PA

prenatal	- comenzando bien: a free spanish prenatal class: comenzando bien (good beginning) was created by the national march of dimes as a way to help educate hispanic women about pre,affiliated health care system: st	231352211	St Joseph Medical Center	2018	PA
prenatal	- carle's all about baby staff provides regular prenatal, breastfeeding and newborn care education along with a teen pregnancy program at the clinic at a cost of \$20,592	371119538	Carle Foundation Hospital	2013	IL
prenatal	programming in the region efforts to address low birth weight in vermilion county: after exploring options to enhance prenatal education programming to address low birth weight in vermilion county, it was identified that timely public data was not available to illustrate the current situation	371119538	Carle Foundation Hospital	2013	IL
prenatal	we explored the option of enhancing prenatal education to reach the lower income women and teens who can benefit; however, with staffing changes at our organization and no updated information available publicly, this effort had to be tabled	371119538	Carle Foundation Hospital	2013	IL
prenatal	reduce disparities in adequacy of prenatal care to promote a coordinated system of care that is local, preventive, holistic, and patient centered	381360529	Spectrum Health - Butterworth Campus	2011	MI
prenatal	prenatal education is delivered in a community setting through the csm blanket of love program	390806315	Columbia St Marys Hospital Milwaukee	2013	WI
prenatal	these broad categories encompass most of the issues scored high on the list except for stds (chlamydia and gonorrhea), maternal and child health issues (inadequate prenatal care and lbw babies), and food insecurity	392031968	Chi Health Nebraska Heart	2016	NE
prenatal	various employees are involved in the promotion of the american cancer society relay for life, the american heart association heart walk, alzheimer's association walk, memory loss support group, and free prenatal classes	420932564	Hegg Memorial Health Center	2015	IA

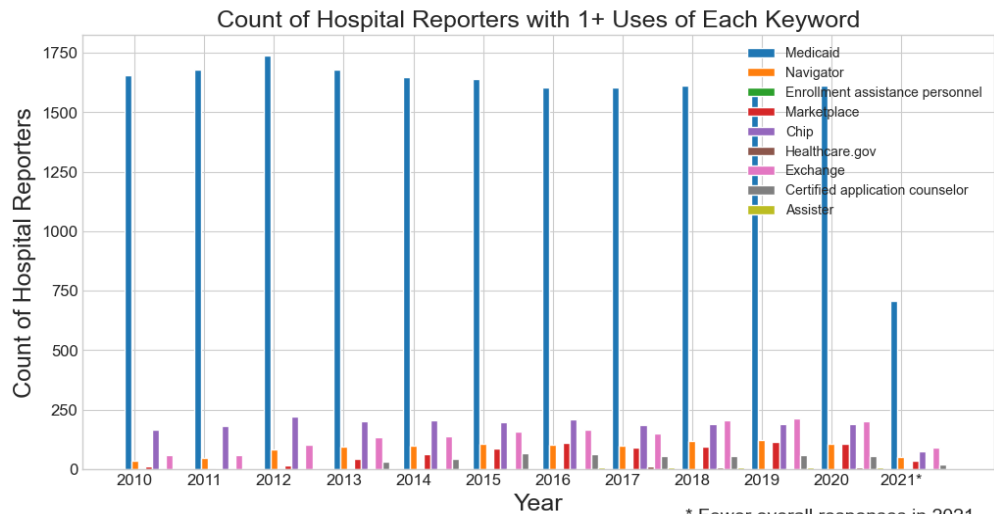
prenatal	the hospital is adding to its specialties yearly, hosting annual public presentations on sun and bike safety and offering safe sitter and prenatal events	421087612	Knoxville Hospital & Clinics	2013	IA
prenatal	"prenatal education and care coordination - munson healthcare grayling hospital offers childbirth and breastfeeding education	471161992	Munson Healthcare Grayling Hospital	2017	MI
prenatal	the hospital also produces a quarterly magazine dedicated to addressing health concerns that provides information about many of the hospital's offerings and community benefit activities such as smoking cessation, free physicals, prenatal yoga classes, diabetes education and the flagler health care academy	590675143	Flagler Hospital	2016	FL
prenatal	oklahoma's most extreme challenges include risky health behaviors such as high levels of smoking, high levels of uninsured, high levels of poverty, limited access to primary care and behavioral health services, inadequate prenatal care, and high rates of premature death	730606129	Jane Phillips Medical Center	2016	OK
prenatal	health care priorities include primary care access, geographic disparities, under/uninsured/working, poor, teen births, prenatal care, childhood immunizations, access to information/referrals, cardiovascular disease, diabetes, respiratory cancer and other chronic diseases, senior population, 45 to 64 year old population group, and mental health service	760591592	Christus St John Hospital	2010	TX
prenatal	this includes: * the cost of providing charity care; * the unpaid costs of participating in medi-cal; and * investments in medical research, health education and community-based public benefit programs such as school-based clinics and prenatal care for patients	942948100	San Leandro Hospital	2013	CA

CBI Query on 2023-12-19 by RTI International

Keywords: medicaid, navigator, enrollment assistance personnel, marketplace, chip, healthcare.gov, exchange, certified application counselor, assister



* Fewer overall responses in 2021



* Fewer overall responses in 2021

Keyword	Example Sentence	EIN	Hospital Name	Tax Year	F990 State
certified application counselor	this staff member is a cac (certified application counselor) through nys	150532079	Cortland Regional Medical Center, Inc	2016	NY
certified application counselor	oswego hospital has a financial counselor on staff that is certified application counselor with training in the nys health insurance exchange	150532220	Oswego Hospital	2021	NY
certified application counselor	all of the counselors completed certified application counselor training and are certified by the new york state department of health	150532221	Our Lady Of Lourdes Memorial Hosp	2014	NY
certified application counselor	communication and education of our certified application counselor for patient insurance enrollment are done so they are informed of the program details and contact information	160743163	St Josephs Hospital, Inc	2019	NY
certified application counselor	communication and education of our certified application counselor for patient insurance enrollment so they are informed of the program details and contact information	160743905	Arnot Ogden Medical Center	2015	NY
certified application counselor	communication and education of our certified application counselor for patient insurance enrollment are done so they are informed of the program details and contact information	160743905	Arnot Ogden Medical Center	2017	NY
certified application counselor	communication and education of our certified application counselor for patient insurance enrollment are done so they are informed of the program details and contact information	160743905	Arnot Ogden Medical Center	2021	NY
certified application counselor	communication and education of our certified application counselor for patient insurance enrollment are done so they are informed of the program details and contact information	160835446	Ira Davenport Memorial Hospital, Inc	2015	NY
certified application counselor	communication and education of our certified application counselor for patient insurance enrollment are done so they are informed of the program details and contact information	160835446	Ira Davenport Memorial Hospital, Inc	2018	NY

certified application counselor	john health system partners with the midland group to help connect consumers with a certified application counselor (cac) for enrollment assistance	203700131	St John Owasso	2015	OK
certified application counselor	john health system network by referring to the midland group for enrollment assistance with a certified application counselor (cac), 3) educating individuals on our financial assistance programs, 4) providing basic health education and screenings at events	203700131	St John Owasso	2015	OK
certified application counselor	northshore has also earned certified application counselor organization (caco) status with the centers for medicare and medicaid services (cms)	362167060	Skokie Hospital	2015	IL
certified application counselor	northshore has also earned certified application counselor organization (caco) status with cms	362167060	Skokie Hospital	2016	IL
certified application counselor	northshore has also earned certified application counselor organization (caco) status with the centers for medicare and medicaid services (cms)	362167060	Skokie Hospital	2018	IL
certified application counselor	northshore has also earned certified application counselor organization (caco) status with the centers for medicare and medicaid services (cms)	362167060	Skokie Hospital	2019	IL
certified application counselor	northshore has also earned certified application counselor organization (caco) status with the centers for medicare and medicaid services (cms)	362167060	Skokie Hospital	2020	IL
certified application counselor	joseph's hospital partnered with cardon financial services to host a certified application counselor onsite, one day a week, 8 hours per week	370663568	St Josephs Hospital	2015	IL
certified application counselor	joseph's hospital partnered with cardon financial services to host a certified application counselor onsite, one day a week, 8 hours per week	370663568	St Josephs Hospital	2016	IL
certified application counselor	patients identified without insurance or needing financial education, are scheduled for an appointment with the certified application counselor (cac)	381303843	Otsego Memorial Hospital	2013	MI

certified application counselor	insurance enrollment outreach and support: bronson provided open enrollment assistance for the marketplace insurance from november 1, 2020 to december 15, 2020 with a cac (certified application counselor)	381359218	Bronson Lakeview Hospital	2020	MI
certified application counselor	insurance enrollment outreach and support: bronson provided open enrollment assistance for the marketplace insurance from november 1, 2021 to december 15, 2021 with a cac (certified application counselor)	381359218	Bronson Lakeview Hospital	2021	MI
certified application counselor	we also contract with a vendor to provide certified application counselor services to assist families applying for health insurance coverage through federal or state facilitated marketplaces	620646012	St Jude Childrens Research Hospital	2017	TN
certified application counselor	in addition to financial counselors being available, wmc has become a certified application counselor organization for the health insurance marketplace and will hold several community talks to help people navigate the complicated process	830279242	Wyoming Medical Center	2012	WY
chip	addressing the identified needs: in response to the priority health needs identified in the 2016 chna, wh developed a three year community health improvement plan (chip)	42104434	Winchester Hospital	2015	MA
chip	the chip was developed with input from the winchester hospital community benefits advisory board and approved by the winchester hospital board of directors	42104434	Winchester Hospital	2015	MA
chip	in fy21, the schenectady coalition for a healthy community met six times throughout the year to strategize, implement and report on activity relative to the goals set forth in the current chna and the community health implementation plan (chip)	141338386	Sunnyview Hospital And Rehabilitation Center	2020	NY
chip	seton health system staff is very active on a number of local nonprofit community boards, including the healthy capital district initiative (hcdi) board by assisting to develop the community health needs agenda as well as advancing a unified reporting system for chip	141776186	St Marys Hospital (Troy)	2015	NY

chip	the process for public input derives from the madison county community health assessment (cha) and community health improvement plan (chip)	161492011	Oneida Healthcare Center	2013	NY
chip	assessment and selection of public health priorities the development of madison coun cha and chip resulted from a coordinated, comprehensive development effort on the part of many stakeholders in the county	161492011	Oneida Healthcare Center	2013	NY
chip	the process yielded the high need health priorities and oneida healthcare subsequently selected its community service plan priorities by adopting the highest areas of need identified in madison countys chip	161492011	Oneida Healthcare Center	2013	NY
chip	additionally, hnmc is a member of the bergen county community health improvement program ("chip"), whose mission is to evaluate and address the health needs of the county	221487322	Holy Name Medical Center	2015	NJ
chip	the chip produces an extensive, very useful, database demonstrating the needs of the county's residents	221487322	Holy Name Medical Center	2015	NJ
chip	also, in june 2004 the hospital joined forces with health organizations and other community groups to organize the fayette county community health improvement partnership chip	250965588	Uniontown Hospital	2017	PA
chip	chip has initiated numerous programs to benefit the health of the public such as a student immunizaiton program, a program to reduce teen pregnancy and smoking, and several health issue related task forces	250965588	Uniontown Hospital	2017	PA
chip	under the auspice of chip is fayette county steps initiative which is a national pilot program funded by the centers for disease control which targets chronic disease prevention	250965588	Uniontown Hospital	2017	PA
chip	the financial counselor interviews the patient, and, if appropriate, discusses and educates the patient relative to medical assistance, blue chip and the hospital's charity program	251490707	Dubois Regional Medical Center	2020	PA

chip	public health coverage includes the federal programs medicare, medicaid, and va health care (provided through the department of veterans affairs), the children's health insurance program (chip) and individual state health plans	362169147	Advocate Lutheran General Hospital	2021	IL
chip	lastly, fmc participates in many government-sponsored health care programs, including medicare, medicaid, champus/tricare, chip, and va choice	363808993	Fallon Medical Complex Hospital	2018	MT
chip	saginaw county chip partners continue to work to strengthen these growing and concerted efforts toward health improvement in saginaw county through collective initiatives	380997730	St Marys Of Michigan	2018	MI
chip	in fy2018, the board dedicated its may 2018 educational session to better understand the recent community health needs assessment (chna) and community health improvement plan (chip)	390817529	St Vincent Hospital	2017	WI
chip	an educational session for the board is also held to better understand the recent community health needs assessment (chna) and community health improvement plan (chip)	390817529	St Vincent Hospital	2019	WI
chip	joseph's hospital in chippewa falls, the chippewa health improvement partnership (chip), le phillips-libertas treatment center and the open door clinic (a free clinic supported by st	390848401	St Clare Memorial Hospital Inc	2013	WI
chip	joseph's hospital and chip) was developed in fy2014 to provide free behavioral health services to eligible patients of the open door clinic	390848401	St Clare Memorial Hospital Inc	2013	WI
chip	races use computer-chip timing	550357050	St Marys Medical Center	2014	WV
chip	children's health: a center for medicaid/medicare funded 2-year grant was awarded to sacred heart health system in 2011 with the objective of increasing and retaining children under the age of 19 in florida's chip or other sources of public funded health insurance coverage	590634434	Sacred Heart Hospital	2012	FL

chip	- in partnership with angelina county and cities health district, our ministry helps to provide assistance for enrolling in the aca exchanges, medicaid, chip and other programs	752663904	St Lukes Health Memorial San August	2018	TX
chip	the account representatives also provide hands-on assistance to patients applying for other financial assistance such as chip's, heating assistance, medicaid, and wic	810241755	Cabinet Peaks Medical Center	2021	MT
chip	org/docs/default-source/community/sh-chip-plan-2020-info-docx	930579722	Salem Hospital	2020	OR
chip	annual events such as senior health fairs, festival of trees, lincoln county fair and the lincoln county chip project are a few examples of how sphs promotes the health of the community	931329784	Samaritan Pacific Comm Hospital	2015	OR
exchange	through our involvement in the rotary club and nashua chamber of commerce,,along with other community organizations, we are able to exchange ideas with areas leaders concerning health care issues and make,informative decisions that best address the health needs of our community	20483054	Southern Nh Medical Center	2011	NH
exchange	oswego hospital has two financial counselors on staff that are certified application counselors with training in the nys health insurance exchange	150532220	Oswego Hospital	2020	NY
exchange	in addition, the agency assists with enrollment through the state's insurance exchange site	160743301	Brooks Memorial Hospital	2021	NY
exchange	they are also referred to the internet healthcare exchange website	237424835	Rappahannock General Hospital	2012	VA
exchange	there has also been an intentional effort to go beyond the sponsorship exchange with organizations in order to work with them to develop strategies and programing to reach the community with health education and services	362739299	Trinity Rock Island	2019	IL
exchange	aca has implemented a private health information exchange (hie) which allows secure data exchange with other hies, hospitals, physician practice emrs and payors	370662580	Ssm Health St Marys Hospital	2013	MO

exchange	,patient accounts receivable are uncollateralized patient obligations that are stated at the amount that reflects the consideration to which thedacare expects to be entitled in exchange for providing patient care	390807068	Thedacare Medical Center - Shawano	2019	WI
exchange	when an uninsured or health insurance exchange eligible patient's adjusted gross income is 151% to 300% of the federal poverty level, they are provided care at the amount generally billed rate	390808498	The Richland Hospital Inc	2013	WI
exchange	northwest medical center will make reasonable efforts to explain the medicaid benefits, the health insurance exchange and coverage, and other public and private coverage that may apply	440580870	Northwest Medical Center	2017	MO
exchange	this allows for immediate access to foreign languages or sign language interpretation using a video exchange service	470379836	Chi Health St Elizabeth	2012	NE
exchange	refer patients to state or federal insurance exchange navigator resources;	520591685	Medstar Union Memorial Hospital	2018	MD
exchange	-refer patients to state or federal insurance exchange navigator resources	520591685	Medstar Union Memorial Hospital	2020	MD
exchange	the population purchasing insurance through the health insurance exchange marketplace is expected to increase 65% by 2020	741595711	Scott And White Hospital Taylor	2016	TX
exchange	patient accounts receivable is reported at the amount that reflects the consideration to which the system expects to be entitled in exchange for providing patient care	750972805	Texas Health Arlington Memorial Hospital	2020	TX
exchange	- health exchange enrollment provides outreach and enrollment by certified healthcare guides in the new health insurance exchange	850289839	Holy Cross Hospital	2016	NM
exchange	they help families determine if they qualify for other sources of funding, including medicaid and qualified health plans sold on the state insurance exchange	910564748	Seattle Childrens Hospital	2013	WA

marketplace	affordable care act education: mdi hospital offered health insurance enrollment counseling to help community members explore their health insurance options on the health insurance marketplace	10211797	Mount Desert Island Hospital	2021	ME
marketplace	to help eliminate this barrier to needed care, in 2013 wchn actively advocated for access health ct, the states new health insurance marketplace, using grass roots communication to encourage enrollment in access health ct	60669121	New Milford Hospital	2012	CT
marketplace	* enrolled nearly 603 individuals in state-sponsored insurance programs and programs through the newly created ny state of health marketplace	141347719	St Marys Healthcare	2017	NY
marketplace	enrolled 712 individuals in state-sponsored insurance programs and programs through the new york state of health marketplace	141347719	St Marys Healthcare	2020	NY
marketplace	the remainder of the population was fairly equally divided between medicaid, medicare, and private market (the purchasers of coverage directly or through the health insurance marketplace)	203749695	Scott & White Hospital-Round Rock	2020	TX
marketplace	the financial counseling staff at american oncologic hospital are cms certified application counselors and provide assistance in obtaining coverage through the health insurance marketplace as well as in assisting patients in obtaining supplemental coverage and prescription drug benefits	231352156	American Oncologic Hospital	2016	PA
marketplace	, medicaid), health insurance marketplace options or in its own hyn discounted care program, which is based on the charity care guidelines of health care providers	232899911	Wellspan Surgery And Rehab Hospital	2013	PA
marketplace	in this time of healthcare reform, healthy york network has focused on communicating changes clearly to members and has provided support in directing members to the health insurance marketplace and other resources	232899911	Wellspan Surgery And Rehab Hospital	2013	PA

marketplace	vincent kokomo hospital participates in government programs including medicaid, schip (hoosier healthwise), healthy indiana plan (hip), the health insurance marketplace and medicare and assists patients in enrolling for programs for which they are eligible	350992717	St Joseph Hospital & Health Center Inc	2015	IN
marketplace	silver access dupage provides financial help to lower-income families purchasing health insurance on the aca marketplace and women's health navigation services	364724966	Northwestern Memorial Hospital	2016	IL
marketplace	aspirus has certified application counselors that are available to assist with marketplace enrollment at well as medical assistance applications	390806429	Aspirus Langlade Hospital	2019	WI
marketplace	aspirus has certified application counselors that are available to assist with marketplace enrollment at well as medical assistance applications	390964813	Aspirus Medford Hospital And Clinics	2015	WI
marketplace	vincent fishers hospital participates in government programs including medicaid, schip (hoosier healthwise), healthy indiana plan (hip), the health insurance marketplace and medicare and assists patients in enrolling for programs for which they are eligible	454243702	St Vincent Fishers Hospital	2015	IN
marketplace	currently, aehn is able to provide the necessary clinical services within the marketplace to medicare beneficiaries at current payment rates	465338502	Albert Einstein Medical Center	2015	PA
marketplace	currently, aehn is able to provide the necessary clinical services within the marketplace to medicare beneficiaries at current payment rates	465338502	Albert Einstein Medical Center	2018	PA
marketplace	the medical center auxiliary proceeds from marketplace, an annual fundraising event of the medical center auxiliary, which benefits healthcare services of ngmc	581694098	Northeast Georgia Medical Center, Inc	2020	GA
marketplace	frances mahon deaconess hospital also employs two staff members that are certified application counselors that help community members with applying for insurance and medicaid on the marketplace	810231786	Frances Mahon Deaconess Hospital	2016	MT

marketplace	an insurance counselor/market place specialist is available to assist community members in navigating the insurance marketplace and enrolling for insurance	810303913	Community Hospital Of Anaconda	2015	MT
marketplace	this report advises that while final survey data results from 2014 will not be available until the latter part of 2015, the shifts in coverage do suggest increased enrollment in medicaid and participation of enrollees in the marketplace	930386936	Mid-Columbia Medical Center	2014	OR
medicaid	- many medicare beneficiaries, like their medicaid counterparts, are poor	240795463	Robert Pack er Hospital	2020	PA
medicaid	many of those medicare beneficiaries are also eligible for medicaid -- so called eligible	240795463	Robert Pack er Hospital	2020	PA
medicaid	" there is every compelling public policy reason to treat medicare and medicaid underpayments similarly for purposes of a hospital's community benefit and include these costs on form 990, schedule h, part i	240795463	Robert Pack er Hospital	2020	PA
medicaid	cobra coverage, special needs program, medicaid, other federal/state programs, or charity care)	240795463	Robert Pack er Hospital	2020	PA
medicaid	each provide medically necessary healthcare services to all individuals regardless of ability to pay, including charity care, self-pay, medicare and medicaid patients; 2	240795463	Robert Pack er Hospital	2020	PA
medicaid	patients also are screened for medicaid eligibility, utilizing financial assistance forms	271789847	Saint Alphon sus Medical Center - Ont	2012	OR
medicaid	self-pay inpatients and surgery patients are visited by an associate from patient financial services who assists them in completing financial assistance forms for county indigent assistance, medicaid, social security and hospital charity care	271789847	Saint Alphon sus Medical Center - Ont	2012	OR
medicaid	schedule h instructions worksheet 3, unreimbursed medicaid and other means-tested government programs, was used to calculate the amounts reported in the table for part i, line 7b	363196629	Advocate Northside Health System	2019	IL

medicaid	financial counseling is provided to help patients identify and obtain payment from third parties, including illinois medicaid, illinois crime victims fund, etc	363196629	Advocate Northside Health System	2019	IL
medicaid	brochures are placed in hospital patient access, registration, emergency department, cashier, and business office locations, and will include guidance on how a patient may apply for medicare, medicaid, all kids, family care etc	363196629	Advocate Northside Health System	2019	IL
medicaid	9 percent of the psa followed by medicaid at 10	363196629	Advocate Northside Health System	2019	IL
medicaid	all advocate's hospitals have relationships with federally qualified health centers or other community clinics within their service areas for providing care for medicaid and uninsured patients	363196629	Advocate Northside Health System	2019	IL
medicaid	medicaid and medicare	363196629	Advocate Northside Health System	2019	IL
medicaid	advocate actively works to improve the provision of services to individuals and families who are covered by medicare and medicaid and that seek services at any of advocate's 400 sites of care	363196629	Advocate Northside Health System	2019	IL
medicaid	advocate collaborates with various community-based organizations (cbos) and federally qualified health centers (fqhcs) in innovative ways to establish primary care relationships for medicaid and uninsured patients	363196629	Advocate Northside Health System	2019	IL
medicaid	advocate collaborates with meridian family health plan (fhp) of illinois as part of an integrated care model for people on medicaid	363196629	Advocate Northside Health System	2019	IL
medicaid	advocate has a strong history of providing high quality care to the medicaid population within its network with key focus areas, including improved care coordination, access and quality performance	363196629	Advocate Northside Health System	2019	IL

medicaid	primary care connection-community health workers (chws) is a quality improvement project to engage and educate medicaid beneficiaries seen in the ed on appropriate level of care options available to them using community health workers	363196629	Advocate Northside Health System	2019	IL
medicaid	the basis for this costing methodology is ucmc's operating expenses (excluding bad debt) adjusted by other operating revenue, the medicaid provider tax, community benefit expense and community building expense divided by ucmc's gross patient charges	363488183	University Of Chicago Hospitals	2014	IL
medicaid	this same rationale applies to medicaid recipients, too poor to cover their own health care expenses	363488183	University Of Chicago Hospitals	2014	IL
medicaid	the organization uses a cost accounting system that addresses all patient segments (for example, inpatient, outpatient, emergency room, private insurance, medicaid, medicare, uninsured, or self pay)	383833117	St John Broken Arrow	2016	OK
medicaid	we also attempt to meet with all the families of all medicaid beneficiaries or individuals who we believe could potentially qualify for medicaid to help them apply for coverage	383833117	St John Broken Arrow	2016	OK
medicaid	despite some recent attention to medicaid expansion in state legislature in 2016 after years of no traction, as of 2017 oklahoma has not expanded medicaid coverage to low-income adults	383833117	St John Broken Arrow	2016	OK
medicaid	tulsa county had 157,240 unduplicated medicaid enrollees during 2013 which represents 25	383833117	St John Broken Arrow	2016	OK
medicaid	creek county had 11,742 unduplicated medicaid enrollees during 2010-2014 which represents 20	383833117	St John Broken Arrow	2016	OK
medicaid	nowata county had 10,351 unduplicated medicaid enrollees during 2011-2015 which represents 22	383833117	St John Broken Arrow	2016	OK
medicaid	washington county had 7,619 unduplicated medicaid enrollees during 2010-2014 which represents 17	383833117	St John Broken Arrow	2016	OK

medicaid	care for the poor: "care for the poor" (which includes the estimated cost of services provided to patients who qualify for financial assistance (charity) and the uncompensated cost of care provided to medicaid beneficiaries) is the largest financial category of community benefit	383833117	St John Broken Arrow	2016	OK
medicaid	part i, line 7 the cost to charge ratio derived from worksheet 2, ratio of patient care cost-to-charges was used to calculate the costs for the following community benefits: charity care and unreimbursed medicaid	411811073	St Marys Hospital Superior	2011	WI
medicaid	medicare, like medicaid, does not pay the full cost of care and it is likely to get worse	411811073	St Marys Hospital Superior	2011	WI
medicaid	many medicare beneficiaries are poor and are eligible for medicaid in addition to medicare	411811073	St Marys Hospital Superior	2011	WI
medicaid	mary's hospital superior has patient account representatives on staff to assist patients in medicaid and other assistance programs (including the charity care program) that may be available to them	411811073	St Marys Hospital Superior	2011	WI
medicaid	0% of their net revenue dollars were medicaid recipients	411811073	St Marys Hospital Superior	2011	WI
medicaid	00 cost-to-charge ratio unreimbursed medicaid \$57,479,612	411811073	St Marys Hospital Superior	2011	WI
medicaid	, evaluation for medicaid, disability, and other types of coverage is provided for uninsured patients for inpatient stays as well as high dollar outpatient services	420680391	Mercy Hospital	2016	IA
medicaid	the amounts on lines 7b-7c (unreimbursed medicaid and other means-tested government programs) are obtained from a cost accounting system of applicable patient segments	421019872	St Lukes Regional Medical Center	2017	IA

medicaid	the elderly constitute a clearly-recognized charitable class, and many medicare beneficiaries, like their medicaid counterparts, are poor and thus would have qualified for the hospital's charity care program, medicaid or other needs-based government programs absent the medicare program	421019872	St Lukes Regional Medical Center	2017	IA
medicaid	the services are provided at a financial loss to children's mercy after removing charity care, unreimbursed medicaid, private insurance shortages and contract, grants and gifts	440605373	Childrens Mercy Hospital	2017	MO
medicaid	efforts are made by the financial counselors to contact self pay patients and families, either in person, or through phone call or letters to inform/assist families with charity care and medicaid or state program eligibility	440605373	Childrens Mercy Hospital	2017	MO
medicaid	the hospital accepts patients paying with medicaid and medicare, and operates an active and generally accessible emergency room open to all children without regard to ability to pay	440605373	Childrens Mercy Hospital	2017	MO
medicaid	since we are in a small community, we were able to identify which accounts may have qualified for charity care because of low income, medicaid eligibility, or some other known hardship to the household	460239781	Platte Health Center Inc	2019	SD
medicaid	the medicare cost report is completed based on the rules and regulations set forth by the centers for medicare and medicaid services	460239781	Platte Health Center Inc	2019	SD
medicaid	for example: medicaid eligibility, homeless, no income, participation in wic, subsidized school lunch program eligibility, deceased with no known estate, or if the patient is incarcerated	460239781	Platte Health Center Inc	2019	SD
medicaid	self-pay patients who may be eligible for medicaid or other state/federal benefits are informed of a third party vendor whom the facility has enlisted to assist patients in exploring benefits that may be available	460239781	Platte Health Center Inc	2019	SD

medicaid	there are an estimated 2,202 (or 24%) people eligible for medicaid; 668 adults and 1,534 children	460239781	Platte Health Center Inc	2019	SD
medicaid	the system also captures all patient pay types - private insurance, medicare, medicaid, uninsured and self pay	522438452	West Kendal I Baptist Hospital	2019	FL
medicaid	the costs have been offset by any payments received from medicaid or any other uncompensated care program	522438452	West Kendal I Baptist Hospital	2019	FL
medicaid	in particular, the centers for medicare & medicaid services ("cms") formally mandated on march 18, 2020 that all elective surgeries and non-essential medical, surgical, and dental procedures be delayed by healthcare providers during the pandemic	522438452	West Kendal I Baptist Hospital	2019	FL
medicaid	the centers for medicare & medicaid services ("cms") will automatically begin recouping the medicare advances by offsetting against any medicare claims submitted by bhsf twelve months from the date of initial receipt of the advance payments by bhsf	522438452	West Kendal I Baptist Hospital	2019	FL
medicaid	those patients who may qualify for financial assistance from a governmental program are referred to the appropriate program such as medicaid, prior to consideration for charity care	522438452	West Kendal I Baptist Hospital	2019	FL
medicaid	the financials include all patient segments, including inpatient, outpatient, emergency room, private insurance, medicaid, medicare, uninsured, and self-pay	560623938	The Mcdowe II Hospital	2013	NC
medicaid	if there is no insurance, the patients are asked a series of questions to determine potential medicaid eligibility	560623938	The Mcdowe II Hospital	2013	NC
medicaid	if the patient is determined to have potential eligibility the patient's account information is forwarded to our onsite dss worker for further inquiries and possibly an appointment is scheduled to complete a medicaid application	560623938	The Mcdowe II Hospital	2013	NC

medicaid	after we review your assistance application, we may determine that you qualify for a discount, medicaid benefits, or other state assistance available to north carolina residents	560623938	The Mcdowe II Hospital	2013	NC
medicaid	medicaid:if you have medicaid, be sure to bring your card with you each time you visit the hospital for any medical services	560623938	The Mcdowe II Hospital	2013	NC
medicaid	medicaid may require you to be referred by your primary care doctor and they may not cover certain services	560623938	The Mcdowe II Hospital	2013	NC
medicaid	information is gathered to assess qualification for medicaid, a medically indigent assistance program, or hospital charity	576005963	Kershaw Health	2014	SC
medicaid	these worksheets include worksheet 1, charity care at cost, worksheet 2, ratio of patient care cost-to-charges and worksheet 3, unreimbursed medicaid and other means-tested government programs	590634433	Nemours Childrens Hospital	2016	FL
medicaid	nemours also covers the costs in excess of government payments for services provided to medicaid and other public health beneficiaries of nearly \$73	590634433	Nemours Childrens Hospital	2016	FL
medicaid	nemours employs financial counselors, as well as engages independent firms (collectively referred to as financial counselors) to assist in determining medicaid eligibility	590634433	Nemours Childrens Hospital	2016	FL
medicaid	patients that arrive for an appointment at one of our practices, or admitted to or present to the emergency room at aidhc or nch as "self pay" are screened for medicaid eligibility	590634433	Nemours Childrens Hospital	2016	FL
medicaid	in some instances, certain financial counselors will ask for and receive limited power of attorney, in an effort to assist the family with the medicaid eligibility process	590634433	Nemours Childrens Hospital	2016	FL
medicaid	to benefit from nemours financial assistance program, a family must participate in the medicaid eligibility process described above	590634433	Nemours Childrens Hospital	2016	FL

medicaid	4%) have health insurance coverage (nsch, 2011), either through a private source or a public health insurance program such as medicaid	590634433	Nemours Childrens Hospital	2016	FL
medicaid	the same cost-to-charge ratio is used to determine the costs associated with services provided to charity care patients and medicaid patients as reported in schedule h, part i, line 7	591479658	Winter Park Memorial Hospital	2019	FL
medicaid	6% - medicaid patients 10	591479658	Winter Park Memorial Hospital	2019	FL
medicaid	8% - medicaid patients 12	591479658	Winter Park Memorial Hospital	2019	FL
medicaid	2% - medicaid patients 14	591479658	Winter Park Memorial Hospital	2019	FL
medicaid	payment for the service will vary base on whether patients have insurance, medicare, medicaid, or self pay (uninsured)	720500565	Desoto Regional Health System	2011	LA
medicaid	contracts are in place with the insurance companies, medicare, and medicaid for reimbursement	720500565	Desoto Regional Health System	2011	LA
medicaid	patients are considered indigent when their family income level is less than 125% of the federal poverty guidelines, they have no insurance, their medicaid services will not be paid due to lack of benefits, and they have no assets	720500565	Desoto Regional Health System	2011	LA
medicaid	,costing methodology: the hospital uses medicare cost report methodology, which apportions routine costs (room and board) based on medicare or medicaid days to total days and apportions ancillary costs based on program charges to total charges	741461220	Frio Regional Hospital	2020	TX
medicaid	9% were medicaid recipients	752770738	Texas Health Presbyterian Hospital Plano	2013	TX

medicaid	\$174,878,698 in patient charity care, \$44,053,911 in support provided through others, \$30,428,913 in unreimbursed medicaid, \$28,000,808 in other community benefits and \$406,799,283 in unreimbursed medicare	752770738	Texas Health Presbyterian Hospital Plano	2013	TX
medicaid	, medicaid spend-down); * low income/subsidized housing is provided as a valid address; or * patient is deceased with no known estate	760436439	Memorial Medical Center Livingston	2016	TX
medicaid	medicare losses are different from medicaid losses, which are counted in the community benefit framework, because medicaid reimbursements generally do not receive the level of attention paid to medicare reimbursement	760436439	Memorial Medical Center Livingston	2016	TX
medicaid	medicaid payment is largely driven by what states can afford to pay, and is typically substantially less than what medicare pays	760436439	Memorial Medical Center Livingston	2016	TX
medicaid	patients who qualify for medicaid are presumed to qualify for full charity write off	760436439	Memorial Medical Center Livingston	2016	TX
medicaid	any charges for days or services written off (excluding medicaid denials related to timeliness of billing, insufficient medical record documentation, missing invoices, authorization, or eligibility issues) as a result of a medicaid are booked as charity	760436439	Memorial Medical Center Livingston	2016	TX
medicaid	some medicaid plans offer coverage for a limited or restricted list of services	760436439	Memorial Medical Center Livingston	2016	TX
medicaid	if a patient is eligible for medicaid, any charges for days or services not covered by the patient's coverage may be written off to charity without a completed application	760436439	Memorial Medical Center Livingston	2016	TX

medicaid	this does not include any share of cost (soc) or other patient cost-sharing amounts such as deductibles or copayments, as such costs are determined by the state to be an amount that the patient must pay before the patient is eligible for medicaid	760436439	Memorial Medical Center Livingston	2016	TX
medicaid	in addition, hospital registration clerks are trained to provide consultation to those who have no insurance or potentially inadequate insurance concerning their financial options including application for medicaid and for assistance under the financial assistance policy	760436439	Memorial Medical Center Livingston	2016	TX
medicaid	approximately 14% of our patient base is uninsured, approximately 15-16% of our patient base is medicaid recipients, and approximately 49-50% of our patient base is medicare recipients	760436439	Memorial Medical Center Livingston	2016	TX
medicaid	the facility(ies) treat persons paying their bills with the aid of public programs like medicare and medicaid	760436439	Memorial Medical Center Livingston	2016	TX
medicaid	this analysis also allows demonstrating a possible "return on investment" from interventions that reduce admissions (for example, for uninsured or medicaid patients) that could have been prevented through better access to ambulatory care resources	800584319	Warren Memorial Hospital	2012	VA
medicaid	,the medical center uses medicare cost report methodology, which apportions routine costs (room and board) based on medicare or medicaid days to total days and apportions ancillary costs based on program charges to total charges	811708177	Christus Mf - Sulphur Springs	2019	TX
medicaid	this is done for all patient segments including inpatient, outpatient, emergency department, private insurance, medicaid, medicare, uninsured and self pay	951802779	Bakersfield Memorial Hospital	2012	CA
medicaid	the cost accounting system is utilized to determine the unreimbursed cost of medicaid and other means-tested government programs	951802779	Bakersfield Memorial Hospital	2012	CA

medicaid	3 million which are included in total community benefit expense related to unreimbursed medicaid (part i, line 7b, column c), and recognized fee-for-service supplemental payments of \$49	951802779	Bakersfield Memorial Hospital	2012	CA
medicaid	3 million during the year reflected under the medicaid program as direct offsetting revenue (part i, line 7b, column d)	951802779	Bakersfield Memorial Hospital	2012	CA
medicaid	this net reduction in the cost of the medicaid program is driving the decrease in the overall cost of community benefit expense as a percent of total expenses when compared to prior years	951802779	Bakersfield Memorial Hospital	2012	CA
medicaid	7% * medicaid patients: 20	951802779	Bakersfield Memorial Hospital	2012	CA
medicaid	0% unpaid costs of medicaid/medi-cal 1,136,319; 538,029,000; 5	951802779	Bakersfield Memorial Hospital	2012	CA
medicaid	this is done for all patient segments including inpatient, outpatient, emergency department, private insurance, medicaid, medicare, uninsured and self pay	951802779	Bakersfield Memorial Hospital	2013	CA
medicaid	the cost accounting system is utilized to determine the unreimbursed cost of medicaid and other means-tested government programs	951802779	Bakersfield Memorial Hospital	2013	CA
medicaid	1 million which are included in total community benefit expense related to unreimbursed medicaid (part i, line 7b, column c), and recognized fee-for-service supplemental payments of \$10	951802779	Bakersfield Memorial Hospital	2013	CA
medicaid	9 million during the year reflected under the medicaid program as direct offsetting revenue (part i, line 7b, column d)	951802779	Bakersfield Memorial Hospital	2013	CA
medicaid	this net reduction in the cost of the medicaid program is driving the decrease in the overall cost of community benefit expense as a percent of total expenses when compared to prior years	951802779	Bakersfield Memorial Hospital	2013	CA

medicaid	7% *medicaid patients: 20	951802779	Bakersfield Memorial Hospital	2013	CA
medicaid	7% unpaid costs of medicaid/medi-cal 1,182,999 864,074,000 8	951802779	Bakersfield Memorial Hospital	2013	CA
medicaid	schedule h, part i, line 7 financial assistance the costing methodology used to calculate financial assistance and medicaid is the allowable cost-to-charge ratio per the cost report	956130458	Eisenhower Medical Center	2018	CA
navigator	one patient navigator specializes in serving the latino community and the other specializes in serving the chinese community, though they also serve patients from other ethnic groups	42103881	Beth Israel Deaconess Medical Center	2020	MA
navigator	the cct navigator works to improve outcomes by referring targeted individuals to appropriate community-based mental health and substance abuse services and serving as a liaison to coordinate and leverage existing community-based resources	60646597	Danbury Hospital	2016	CT
navigator	the hospital also has staff that is a certified navigator for the ct exchange programs helping patients with the application process,the johnson memorial hospital, jmh, is an acute care hospital which serves communities in north central connecticut and western massachusetts	60646696	Johnson Memorial Hospital	2013	CT
navigator	the cct navigator works to improve outcomes by referring targeted individuals to appropriate community-based mental health and substance abuse services and serving as a liaison to coordinate and leverage existing community-based resources	66068853	Norwalk Hospital	2017	CT
navigator	the hospital employs a colonoscopy screening patient navigator to decrease cancellations due to poor preparation and no shows and to provide outreach services to increase the number of patients receiving colonoscopy screening	111631788	Jamaica Hospital Medical Center	2018	NY

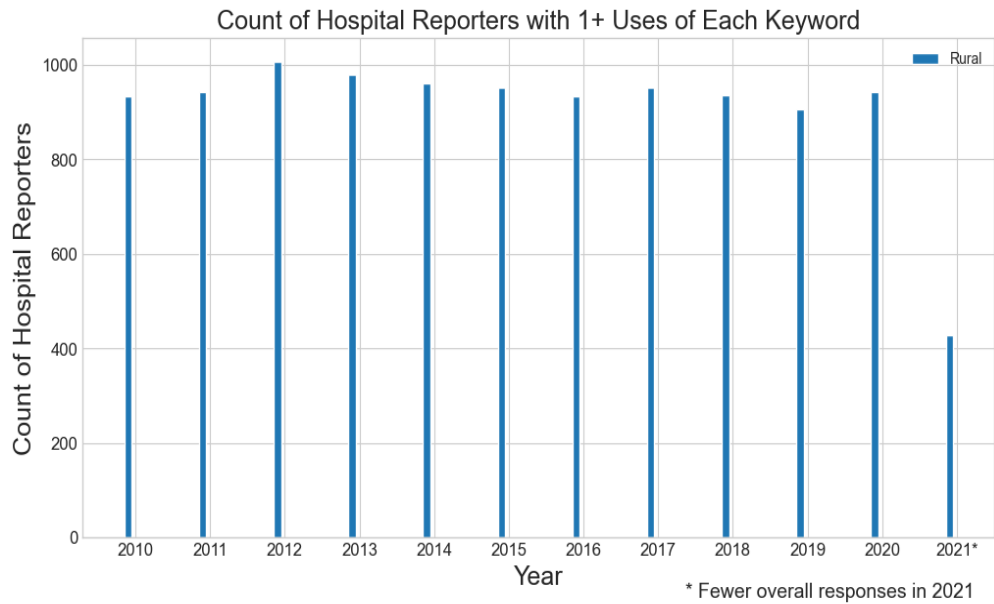
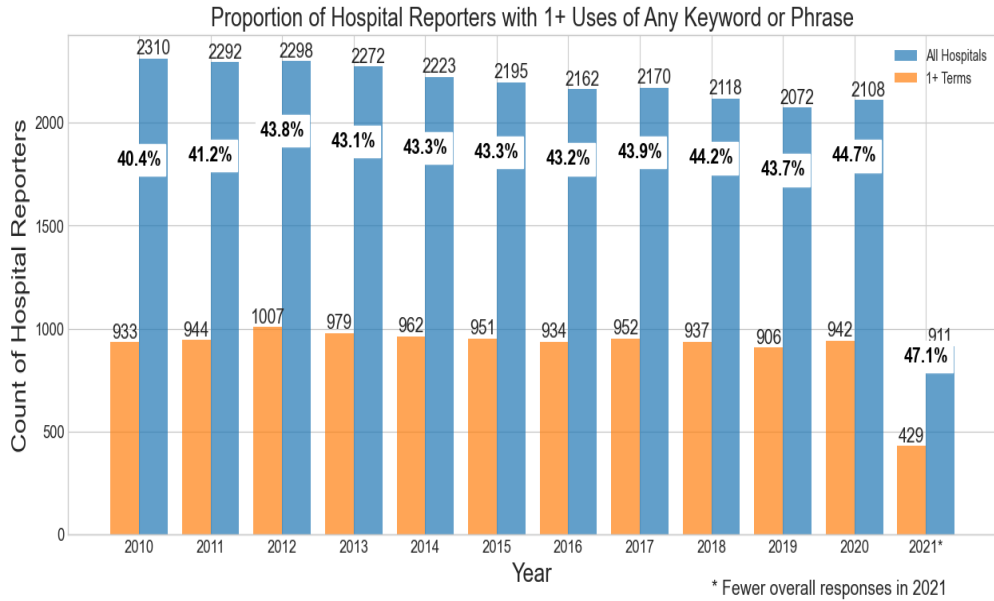
navigator	in addition, the hac staff refers patients to the medicaid prenatal care program and to the senior navigator program within northwell for assistance with medicaid for pregnant women and medicare enrollment for seniors	131740118	Northern Westchester Hospital	2017	NY
navigator	data gathered by dohmn and the uhf prompted the hospital to establish a patient navigator program with the ultimate goal of increasing the chinese community colonoscopy screening rate	133049852	New York Downtown Hospital	2010	NY
navigator	the protocol also includes a "warm" handoff/referral to a patient care navigator who helps the patient get into primary care at the institute or other community based providers	134111638	Ellenville Regional Hospital	2016	NY
navigator	the students have ranged from certificate programs, associate, bachelor to master's degrees with a variety of programs and majors which have included pre-medical, social work, health care administration, public health, social services and health care navigator	310672132	Dayton Childrens Hospital	2020	OH
navigator	the health access worker also advocates for clients with service providers and serves as a system navigator	352103153	St Vincent Randolph Hospital Inc	2015	IN
navigator	in addition, we offer the free services of a certified "navigator" who can assist the public while evaluating health insurance choices offered in the aca marketplace	363808993	Fallon Medical Complex Hospital	2019	MT
navigator	evone barkho, arabic navigator for st	383322109	St John Macomb-Oakland Hospital-Oakland Center	2012	MI
navigator	one community health navigator is based at albrecht free clinic and the other at casa guadalupe education center, both in west bend	390806302	St Josephs Community Hospital	2016	WI
navigator	fy 2017 outcomes/progress:fy 17 is the second year of a five year partnership with albrecht free clinic and casa guadalupe education center community health navigator program	390806302	St Josephs Community Hospital	2016	WI

navigator	- symptom navigator - "where does it hurt?" - my checkups - know when to schedule important exams	430652680	St Lukes Hospital	2017	MO
navigator	support the nurse navigator program to assist patients with guidance throughout their healthcare journey	440629397	Carroll County Hospital	2019	MO
navigator	additionally, with the implementation of the affordable care act health insurance information is made available for patients and their families regarding the insurance market place as well as instruction on how to contact a navigator for assistance	481226831	Cheyenne County Hospital	2017	KS
navigator	refer patients to state or federal insurance exchange navigator resources;	520591685	Medstar Union Memorial Hospital	2018	MD
navigator	from senior citizen wellness programs to patient assistance via a cancer navigator, arh's communities are reaping the benefits of successful community outreach	520795508	Whitesburg Arh Hospital	2015	KY
navigator	from senior citizen wellness programs to patient assistance via a cancer navigator, arh's communities are reaping the benefits of successful community outreach	520795508	Whitesburg Arh Hospital	2016	KY
navigator	lily ramos is the diabetes navigator who coordinates care for dozens of diabetes patients each week	561943271	Carondelet Heart And Vascular Instit	2012	AZ
navigator	diabetes navigator lily ramos (right) shows patient alexandra budeac how to use the blood glucose monitor	561943271	Carondelet Heart And Vascular Instit	2012	AZ
navigator	a carondelet ed navigator gets involved when a patient needs more than just emergency medical care	561943271	Carondelet Heart And Vascular Instit	2012	AZ
navigator	for patients who are without insurance and without a home, the ed navigator helps connect them to the resources they need	561943271	Carondelet Heart And Vascular Instit	2012	AZ
navigator	if someone uses the ed for all their health care even when the situation isn't an emergency the ed navigator can arrange care in a more appropriate setting	561943271	Carondelet Heart And Vascular Instit	2012	AZ

navigator	mary's ed navigator's efforts resulted in a savings of more than \$200,000	561943271	Carondelet Heart And Vascular Instit	2012	AZ
navigator	joseph's hospital :margaret rweikiza-polk, bspa, serves as ed navigator at st	561943271	Carondelet Heart And Vascular Instit	2012	AZ
navigator	the ed navigator was able to find him a place to stay at a local shelter	561943271	Carondelet Heart And Vascular Instit	2012	AZ
navigator	mary's hospital: renee perez is the ed navigator at st	561943271	Carondelet Heart And Vascular Instit	2012	AZ
navigator	,community support expenditures including the following: provided staff to local family connections committee to help needy in jasper county, participated in community wide back to school rally, community emergency preparedness teams and functions, navigator activities, family dependency sessions	582510435	Jasper Memorial Hospital	2016	GA
navigator	the patient navigator helps patients from the time there is a suspicion of breast cancer until treatment is concluded	590675143	Flagler Hospital	2013	FL
navigator	the breast cancer patient navigator participates in many community events, educating women on the benefits of early detection and the importance of performing self-examinations	590675143	Flagler Hospital	2013	FL
navigator	stakeholders include the following: toni abbey, southwest oncology & blueprints of hope, survivorship nurse navigator & founder ed aber, lpco so, It	840405257	Mercy Regional Medical Center	2012	CO

CBI Query on 2024-05-08 by RTI International

Keywords: rural



Keyword	Example Sentence	EIN	Hospital Name	Tax Year	F990 State
---------	------------------	-----	---------------	----------	------------

rural	,down east community hospital provides services to rural communities of washington county, maine	10263198	Down East Community Hospital	2015	ME
rural	the population mostly resides in the 27 small towns and outlying rural areas	30183483	Rutland Regional Medical Center	2019	VT
rural	as a rural community health system, rrmc provides a broad array of services	30183483	Rutland Regional Medical Center	2019	VT
rural	,the oswego hospital service area encompasses much of oswego county, a rural and economically-challenged region	150532220	Oswego Hospital	2019	NY
rural	kenmore mercy hospital is located in erie county, which consists of a mix of urban, suburban and rural populations, with about one-third of the population residing in the city of buffalo	160762843	Kenmore Mercy Hospital	2019	NY
rural	beyond the first ring suburbs are newer suburban communities and established rural communities	160762843	Kenmore Mercy Hospital	2019	NY
rural	the countys total population is 919,719 and is comprised of urban, suburban, and rural cities, towns, and villages	161533232	Kaleida Health	2019	NY
rural	the countys total population is 210,433 and is comprised of urban, suburban, and rural cities, towns, and villages	161533232	Kaleida Health	2019	NY
rural	,part vi, line 4: meyersdale medical center (mymc) serves a rural area in southwestern pennsylvania's historic somerset county	251002946	Meyersdale Community Hospital	2011	PA
rural	mymc president mary libengood serves as president of the pennsylvania rural health association	251002946	Meyersdale Community Hospital	2011	PA
rural	it is an advocacy group with the goal of improving and maintaining the health of residents in rural pennsylvania	251002946	Meyersdale Community Hospital	2011	PA
rural	the oklahoma office of rural health facilitated these meetings	272716065	Mercy Hospital El Reno	2015	OK
rural	1 million pediatric population that includes poor urban and rural areas	310672132	Dayton Childrens Hospital	2016	OH

rural	marys (auglaize county), a rural small town environment dominated by agriculture and small manufacturing	341623770	Joint Township District Memorial Hospital	2020	OH
rural	the service area is primarily rural, with a strong agricultural base	363311936	Stevens Community Medical Center	2020	MN
rural	it allows scmc to continue to support the growth of students in rural health care programs	363311936	Stevens Community Medical Center	2020	MN
rural	it is a rural county with a central city of owosso (population 15,000)	381358208	Memorial Healthcare	2013	MI
rural	caro community hospital has currently joined the michigan rural health group who will conduct the community health needs assessment for the hospital as needed	383426063	Caro Community Hospital	2019	MI
rural	gmc, aledo and its related organizations live its mission each and every day by serving a 10-county region of eastern iowa and western illinois, including both urban and rural areas	454475683	Genesis Medical Center - Aledo	2017	IL
rural	24% lived in urban setting with 12,779 lived in a rural setting, or 77	454475683	Genesis Medical Center - Aledo	2017	IL
rural	the population density in the park nicollet service area consists of a mix of urban, suburban, exurban and rural communities	455023260	Park Nicollet Methodist Hospital	2015	MN
rural	,part i, line 7g: the rural health clinic expense totalled \$958,196,part i, 17 col(f): bad debt expense of \$522,967 was subtracted from total operating expense	460226283	Wagner Community Memorial Hospital	2011	SD
rural	,part vi, line 4: wagner is a rural community located in southern charles mix county of south dakota which has many health disparities with unmet needs	460226283	Wagner Community Memorial Hospital	2011	SD
rural	the county is also considered a health professional shortage area with few providers and many miles in between these rural communities	460226283	Wagner Community Memorial Hospital	2011	SD

rural	there are only a few rural health clinics available in addition to the ihs clinic and the newly built va facility	460226283	Wagner Community Memorial Hospital	2011	SD
rural	these services allow rural patients to be cared for at their local hospitals, provide rural hospitals access to immediate specialty care and support, and help reduce health care costs and travel	460226283	Wagner Community Memorial Hospital	2011	SD
rural	the area is mostly rural in nature with only one city of over 50,000 people	460372454	Spearfish Regional Surgery Center	2011	SD
rural	barton county is a rural, primarily farming community with three small towns, all of which have school systems	471087427	Barton County Memorial Hospital	2018	MO
rural	we actively live this mission by providing quality health care with a hospital in lamar and two access points to rural health clinics within our service area	471087427	Barton County Memorial Hospital	2018	MO
rural	bcmh was struggling as a rural hospital to keep up with declining revenue	471087427	Barton County Memorial Hospital	2018	MO
rural	,pleasant valley hospital is a rural hospital in point pleasant, wv	550440086	Pleasant Valley Hospital	2018	WV
rural	,mrmc serves the vidalia, toombs county region, a rural southeast georgia community	582044503	Meadows Regional Medical Center	2016	GA
rural	stanley health center, a rural health center	582044503	Meadows Regional Medical Center	2016	GA
rural	renamed marymount - our lady of the mountain, the mission of the sisters was to extend the healing ministry of christ bringing quality health care to the poor and underserved of rural kentucky	611334601	Saint Joseph Hospital	2014	KY
rural	laurel county is a fairly rural community in kentucky	611334601	Saint Joseph Hospital	2014	KY

rural	cahs are rural community hospitals that are certified to receive cost-based reimbursement from medicare	611334601	Saint Joseph Hospital	2014	KY
rural	the rural health clinic (memorial family practice) expanded hours continued this year, and is allowing our family practice physicians, nurse practioners and physician assistant to be more available to our community	742851819	Artesia General Hospital	2010	NM
rural	we are addressing this need by offering one-year residency programs for university of new mexico graduate nursing students to train them for working in a rural health practice	742851819	Artesia General Hospital	2010	NM
rural	in 2015, a hospital based rural health clinic was established to continue to provide physician services to val verde county	742941598	Val Verde Regional Medical Center	2017	TX
rural	,part i, line 7g: two rural clinics and adult day health were included in line 7g	820146328	Gritman Medical Center	2011	ID
rural	because our primary service area includes many small rural towns, the gritman community relations team traveled to the towns, setting up the survey in the local libraries so that those without computer and online access could participate	820146328	Gritman Medical Center	2011	ID
rural	9% in a rural frontier area of 15 people per square mile in more than 2,500 square miles	850289839	Holy Cross Hospital	2013	NM
rural	we provide primary care, acute hospital care, surgery care, and rehabilitative sports medicine and physical therapy services as well as a women's health clinic, a rural health clinic, and a surgical specialties clinic to ensure that the community's need for care is met	850289839	Holy Cross Hospital	2013	NM
rural	polk county is mostly rural and has the second largest area devoted to viticulture in the state at 1,322 acres	930579722	Salem Hospital	2017	OR
rural	marion county is a mix of urban and rural with a population of 336,316	930579722	Salem Hospital	2017	OR